

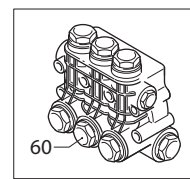
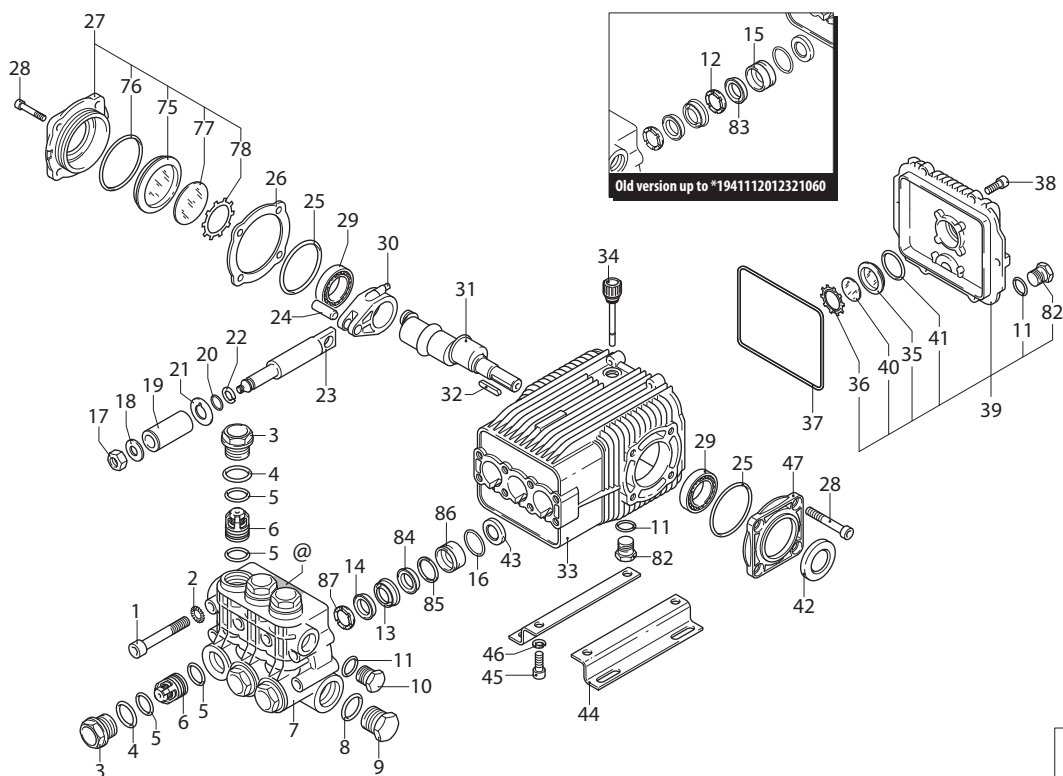
XWF

VERSION

N

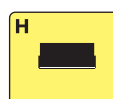
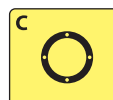
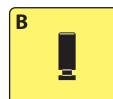
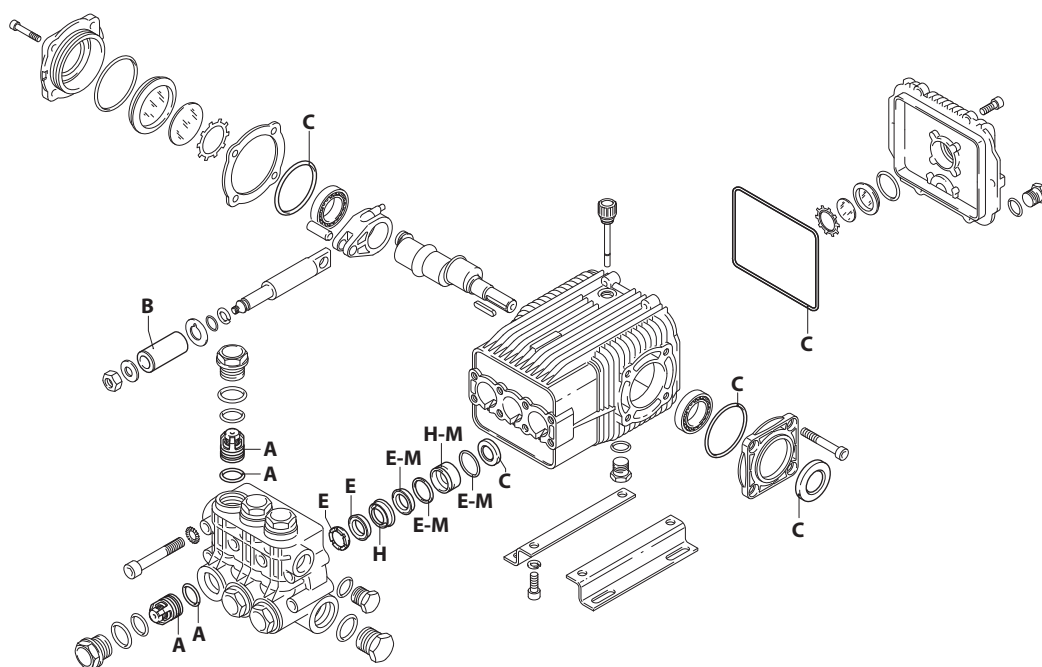
1000rpm

Ø 24x45 mm



UN003322-DQ

KIT RICAMBI / PART KITS



UN003323-DQ

194 Series

XWF 1000 rpm N version ø 24 mm



26.06 (21049) 26.15 (21052) 30.18 (21055)
26.09 (21050) 26.20 (21053) 30.20 (22921)
26.12 (21051) 30.10 (21054) 36.17 (21056)

| Pos. | Cod. | Denominazione | Description | Qt | Note | Pos. | Cod. | Denominazione | Description | Qt | Note |
|------|---------|------------------------------|----------------|--------|------------------|--------|---------|------------------------------|------------------------|--------|-----------------|
| 1 | 1940260 | Vite | TCEI M10x80 | Screw | 8 | C=50Nm | 36 | 1260430 | Anello | Ring | 1 |
| 2 | 650530 | Rondella | | Washer | 8 | | 37 | 1940410 | Guarnizione OR Ø 132x3 | O-ring | 1 |
| 3 | 1940140 | Tappo | | Plug | 6 | C=68Nm | 38 | 1200430 | Vite TCEI M6x16 | Screw | 6 |
| 4 | 1940150 | Anello antiestrusione | Ring | 6 | | 39 | 1949010 | Coperchio completo | Cover | 1 | |
| 5 | 1140450 | Guarnizione OR Ø 20,24x2,62 | O-ring | 12 | | 40 | 1780690 | Disco | Plate | 1 | |
| 6 | 1949050 | Valvola completa | Complete valve | 6 | | 41 | 1140450 | Guarnizione OR Ø 20,24x2,62 | O-ring | 1 | |
| 7 | 1941550 | Testa | Head | 1 | | 42 | 820680 | Anello tenuta | Ring | 1 | |
| 8 | 550350 | Guarnizione OR Ø 23,81X2,62 | O-ring | 1 | | 43 | 1940560 | Anello tenuta | Ring | 3 | (d) |
| 9 | 1140300 | Tappo 3/4" G | Plug | 1 | C=35Nm | 44 | 1940370 | Piede | Foot | 2 | Optional |
| 10 | 1980740 | Tappo 3/8" G ottone | Plug | 1 | C=25Nm | 45 | 1940380 | Vite TCEI 10x18 | Screw | 4 | Optional C=50Nm |
| 11 | 740290 | Guarnizione OR Ø 14x1,78 | O-ring | 3 | | 46 | 200231 | Rondella | Washer | 4 | Optional |
| 12 | - | Anello appoggio Ø28 | Ring | 3 | (a) | 47 | 1941240 | Supporto | Support | 1 | |
| 13 | 1140280 | Guida pistone anteriore Ø28 | Piston guide | 3 | | 60 | 1949205 | Premontaggio testa | Head assembly | 1 | |
| 14 | 820630 | Guarnizione Ø 28 marrone | Gasket | 3 | ☒ | 75 | 1941270 | Indicatore livello | Level gauge | 1 | |
| | 820631 | Guarnizione Ø 28 nera | Gasket | 3 | ☒ | 76 | 100410 | Guarnizione OR Ø 34,6x2,62 | O-ring | 1 | |
| 15 | - | Guida pistone posteriore Ø28 | Piston guide | 3 | (a) | 77 | 1941260 | Disco | Plate | 1 | |
| 16 | 1140490 | Guarnizione OR Ø 37,82x1,78 | O-ring | 3 | | 78 | 1941290 | Anello | Ring | 1 | |
| 17 | 1940570 | Dado | Nut | 3 | ☉ C=12Nm | 82 | 1980740 | Tappo 3/8" G ottone | Plug | 2 | C=20Nm |
| 18 | 1940580 | Rondella | Washer | 3 | | 83 | - | Guarnizione Ø 28 nera | Gasket | 3 | ☒ Viton (a) |
| 19 | 1140190 | Pistone Ø 28 | Piston | 3 | | 84 | 2520360 | Guarnizione Ø 28 | Gasket | 3 | (b) |
| 20 | 880840 | Guarnizione OR Ø 9,25x1,78 | O-ring | 3 | | | 2520361 | Guarnizione Ø 28 | Gasket | 3 | (b) Viton |
| 21 | 1140160 | Disco | Plate | 3 | | 85 | 2520230 | Anello antiestrusione | Ring | 3 | (b) |
| 22 | 1940120 | Anello antiestrusione | Ring | 3 | | 86 | 1942260 | Guida pistone posteriore Ø28 | Piston guide | 3 | (b) |
| 23 | 1940070 | Pistone di guida | Piston | 3 | | 87 | 1941570 | Anello appoggio Ø28 | Ring | 3 | |
| 24 | 1940060 | Perno | Hub pin | 3 | | | | | | | |
| 25 | 1941380 | Guarnizione OR Ø 66,34x2,62 | O-ring | 2 | | | | | | | |
| 26 | 1941390 | Spessore 0,05 mm | Shim 0.05 mm | 1÷3 | | | | | | | |
| | 1941400 | Spessore 0,10 mm | Shim 0.10 mm | 1÷3 | | | | | | | |
| | 1941410 | Spessore 0,19 mm | Shim 0.19 mm | 1÷3 | | | | | | | |
| | 1941420 | Spessore 0,25 mm | Shim 0.25 mm | 1÷3 | | | | | | | |
| 27 | 1949011 | Coperchio | Cover | 1 | | | | | | | |
| 28 | 850370 | Vite TCEI M8x16 | Screw | 8 | C=24,5Nm | | | | | | |
| 29 | 1140410 | Cuscinetto | Bearing | 2 | | | | | | | |
| 30 | 1940051 | Biella alluminio | Connecting-rod | 3 | ○ ■ □ ☉ C=24,5Nm | | | | | | |
| | 2520370 | Biella bronzo | Connecting-rod | 3 | ● ☉ C=24,5Nm | | | | | | |
| 31 | 1940980 | Albero marcato 8 | Shaft | 1 | ○ | | | | | | |
| | 1940170 | Albero marcato 2 | Shaft | 1 | ☼ ● | | | | | | |
| | 1940160 | Albero marcato 1 | Shaft | 1 | □ | | | | | | |
| 32 | 650250 | Linguetta | Key | 1 | | | | | | | |
| 33 | 1941330 | Corpo pompa | Pump body | 1 | | | | | | | |
| 34 | 1140370 | Tappo | Plug | 1 | | | | | | | |
| 35 | 1260250 | Indicatore livello | Level gauge | 1 | | | | | | | |

KIT RICAMBI - PART KITS

| A=KIT 2780 valvole valves | | B=KIT 1849 ø 28 pistoni pistons | | C=KIT 2873 tenute olio oil seals | | E=KIT 42708 ø 28 tenute acqua water seals | |
|---------------------------------|------|---------------------------------------|------|--|------|---|------|
| Pos. | Q.ty | Pos. | Q.ty | Pos. | Q.ty | Pos. | Q.ty |
| 5 | 6 | 19 | 3 | 25 | 2 | 14 | 3 |
| 6 | 6 | | | 37 | 1 | 16 | 3 |
| | | | | 42 | 1 | 84 | 3 |
| | | | | 43 | 3 | 85 | 3 |
| | | | | | | 87 | 3 |

| H=KIT 42707 guida pistoni pistons guide | | M=KIT 42650 retrofit retrofit | | M=KIT 42699 retrofit viton retrofit viton | | | |
|---|------|-------------------------------------|------|---|------|------|------|
| Pos. | Q.ty | Pos. | Q.ty | Pos. | Q.ty | Pos. | Q.ty |
| 13 | 3 | 16 | 3 | 16 | 3 | | |
| 86 | 3 | 84 | 3 | 84 | 3 | | |
| | | 85 | 3 | 85 | 3 | | |
| | | 86 | 3 | 86 | 3 | | |

SIMBOLOGIA - SYMBOLS

| | | | |
|---|---|--|--|
| ○ Per / For XWF 26.06 cod. 21049 XWF 26.09 cod. 21050 XWF 26.12 cod. 21051 XWF 26.15 cod. 21052 XWF 26.20 cod. 21053 | ☉ Per / For XWF 30.10 cod. 21054 XWF 30.18 cod. 21055 | ● Per / For XWF 30.20 cod. 22921 | □ Per / For XWF 36.17 cod. 21056 |
|---|---|--|--|

- C Tolleranza coppia di serraggio +0÷-10% / Tightening torque tolerance +0÷-10%
- ☉ Avvitare con Loxeal 55-14 / Screw with Loxeal 55-14
- ☒ Lubrificare con grasso Molykote PG54 solo sul diametro INTERNO / Lubricate with grease Molykote PG54 on the INNER diameter only
- (a) Ordinare kit retrofit o kit retrofit viton / Demand kit retrofit or kit retrofit viton
- (b) Da matricola numero *1941112012321060 / From serial number *1941112012321060
- (d) Montare anello tenuta con attrezzo cod. 1941990 / Fit the seal with tool code nr. 1941990
- @ Posizionamento targa di identificazione / Identification plate positioning

| Olio - Oil | | | |
|-------------|---------------------|--|--|
| Tipo / Type | Quantità / Quantity | | |
| SAE 15W40 | 0,9 Kg | | |