

DOLSW5.5230
DOLSW7.5230
DOLSW11230

WIRING DIAGRAM FOR
 3 PHASE SUPPLY WITH
 230V COIL

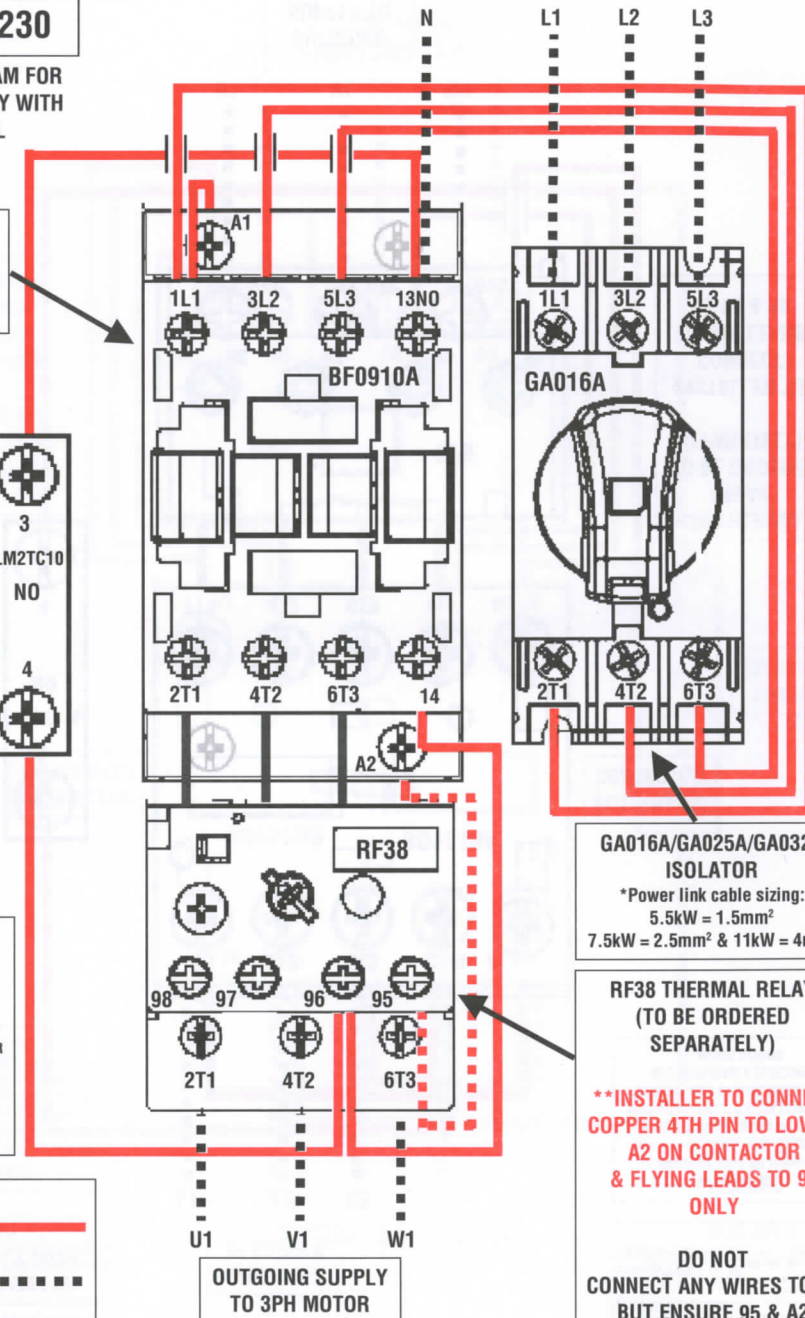
BF0910A230/
 BF1810A230/
 BF2510A230
 CONTACTOR

START
 CONTACT

INCOMING TPN SUPPLY

WARNING
 TO PREVENT RISK OF
 DAMAGE OR SAFETY
 HAZARDS, THIS
 EQUIPMENT SHOULD
 ONLY BE INSTALLED BY
 SUITABLY QUALIFIED OR
 COMPETENT PERSONS
 AND IN ACCORDANCE
 WITH ALL APPLICABLE
 ELECTRICAL
 REGULATIONS

KEY
 CONTROL WIRING
 ALREADY INCLUDED ———
 CONNECTIONS TO BE
 MADE BY INSTALLER - - - - -
 **RF38 INTERNAL
 95-A2 CONNECTION ·····



GA016A/GA025A/GA032A
 ISOLATOR
 *Power link cable sizing:
 5.5kW = 1.5mm²
 7.5kW = 2.5mm² & 11kW = 4mm²

RF38 THERMAL RELAY
 (TO BE ORDERED
 SEPARATELY)

****INSTALLER TO CONNECT
 COPPER 4TH PIN TO LOWER
 A2 ON CONTACTOR
 & FLYING LEADS TO 96
 ONLY**

**DO NOT
 CONNECT ANY WIRES TO 95
 BUT ENSURE 95 & A2
 TERMINALS ARE TIGHTENED**

DOLSW5.5400
DOLSW7.5400
DOLSW11400

WIRING DIAGRAM FOR
 3 PHASE SUPPLY WITH
 400V COIL

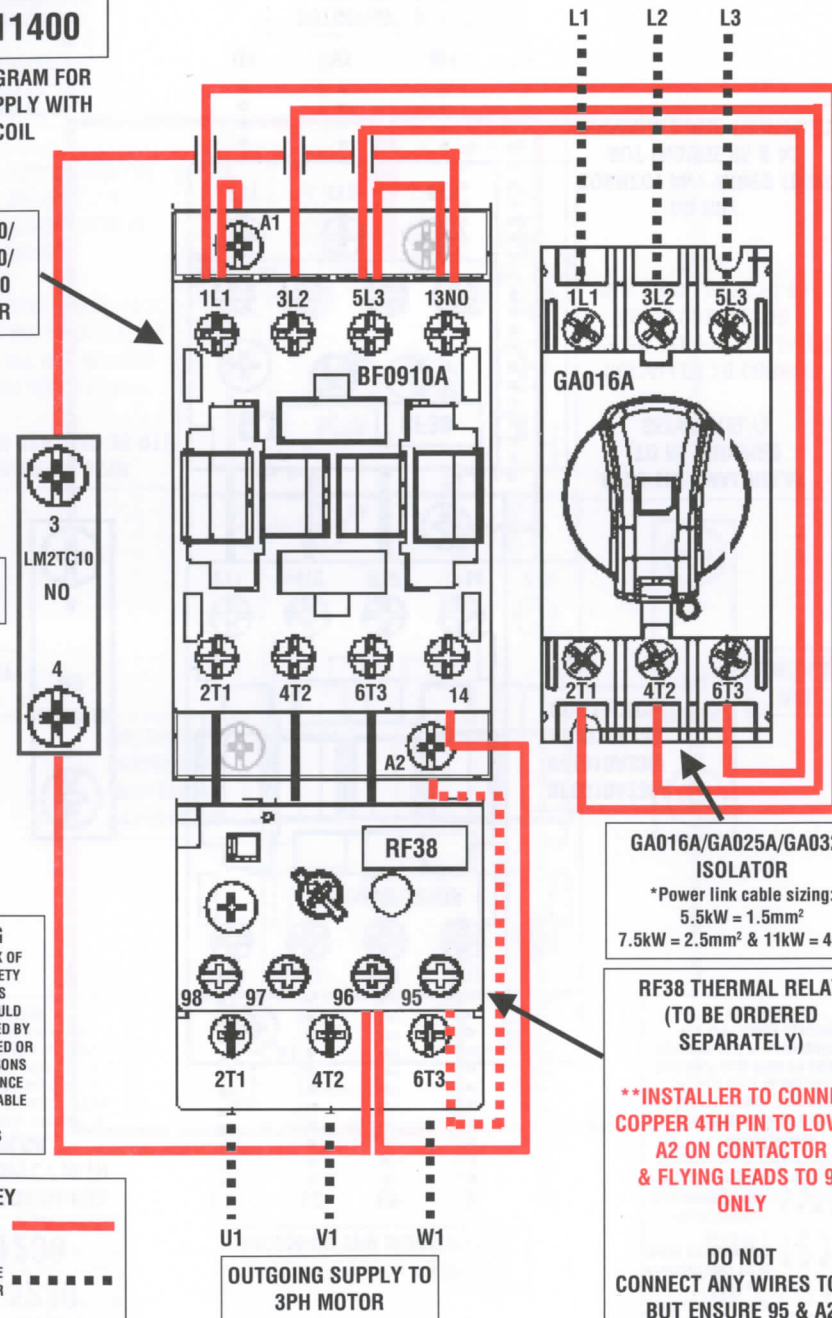
BF0910A400/
 BF1810A400/
 BF2510A400
 CONTACTOR

START
 CONTACT

INCOMING
 TP SUPPLY

WARNING
 TO PREVENT RISK OF
 DAMAGE OR SAFETY
 HAZARDS, THIS
 EQUIPMENT SHOULD
 ONLY BE INSTALLED BY
 SUITABLY QUALIFIED OR
 COMPETENT PERSONS
 AND IN ACCORDANCE
 WITH ALL APPLICABLE
 ELECTRICAL
 REGULATIONS

KEY
 CONTROL WIRING
 ALREADY INCLUDED ———
 CONNECTIONS TO BE
 MADE BY INSTALLER - - - - -
 **RF38 INTERNAL
 95-A2 CONNECTION ·····



GA016A/GA025A/GA032A
 ISOLATOR
 *Power link cable sizing:
 5.5kW = 1.5mm²
 7.5kW = 2.5mm² & 11kW = 4mm²

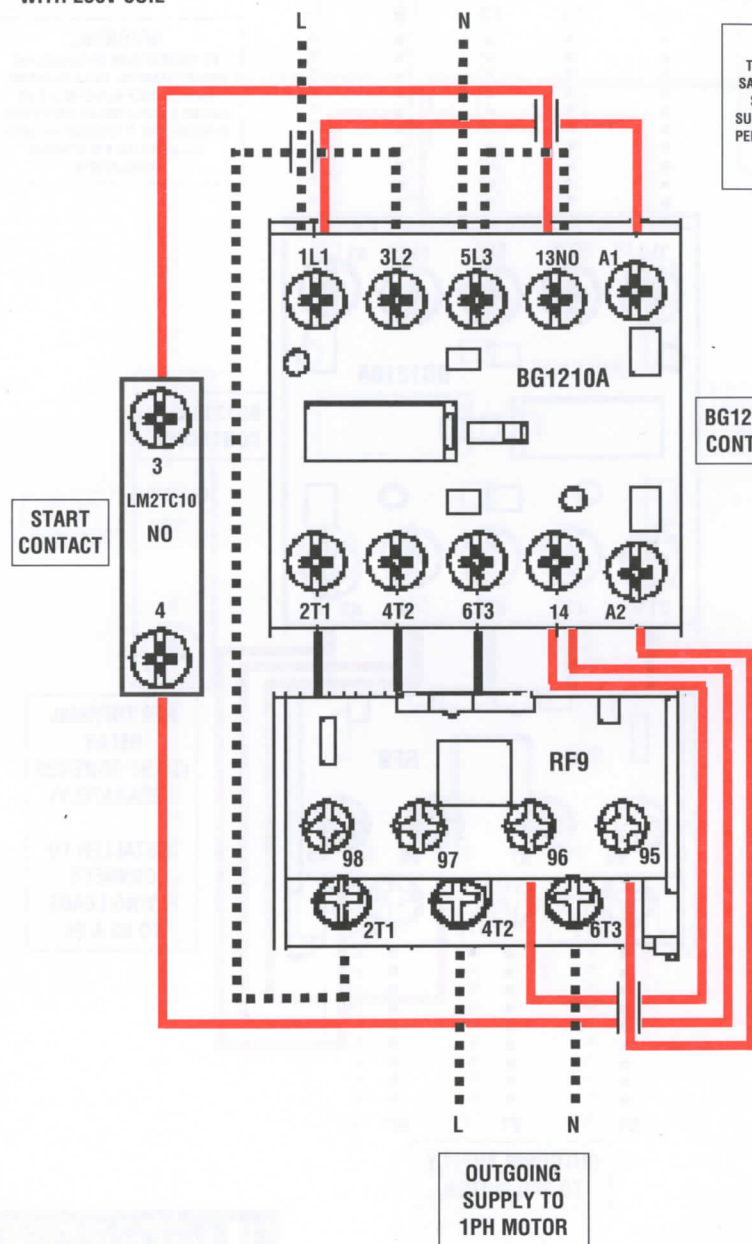
RF38 THERMAL RELAY
 (TO BE ORDERED
 SEPARATELY)

****INSTALLER TO CONNECT
 COPPER 4TH PIN TO LOWER
 A2 ON CONTACTOR
 & FLYING LEADS TO 96
 ONLY**

**DO NOT
 CONNECT ANY WIRES TO 95
 BUT ENSURE 95 & A2
 TERMINALS ARE TIGHTENED**

DOLC5.5230

WIRING DIAGRAM FOR
SINGLE PHASE SUPPLY
WITH 230V COIL



KEY
CONTROL WIRING ALREADY INCLUDED ———
CONNECTIONS TO BE MADE BY INSTALLER - - - - -

WARNING
TO PREVENT RISK OF DAMAGE OR SAFETY HAZARDS, THIS EQUIPMENT SHOULD ONLY BE INSTALLED BY SUITABLY QUALIFIED OR COMPETENT PERSONS AND IN ACCORDANCE WITH ALL APPLICABLE ELECTRICAL REGULATIONS

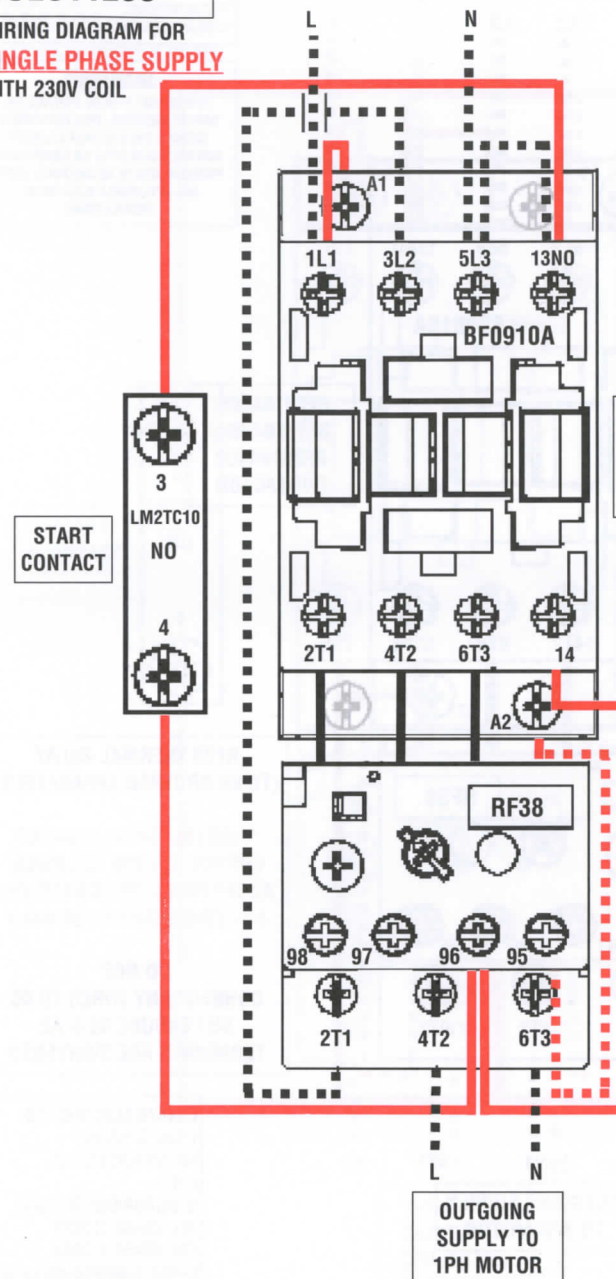
BG1210A230
CONTACTOR

RF9 THERMAL
RELAY
(TO BE ORDERED
SEPARATELY)

INSTALLER TO
CONNECT
FLYING LEADS
TO 95 & 96

DOLS5.5230 DOLS7.5230 DOLS11230

WIRING DIAGRAM FOR
SINGLE PHASE SUPPLY
WITH 230V COIL



KEY
CONTROL WIRING ALREADY INCLUDED ———
CONNECTIONS TO BE MADE BY INSTALLER - - - - -
RF38 INTERNAL 95-A2 CONNECTION** - - - - -

WARNING
TO PREVENT RISK OF DAMAGE OR SAFETY HAZARDS, THIS EQUIPMENT SHOULD ONLY BE INSTALLED BY SUITABLY QUALIFIED OR COMPETENT PERSONS AND IN ACCORDANCE WITH ALL APPLICABLE ELECTRICAL REGULATIONS

BF0910A230/
BF1810A230/
BF2510A230
CONTACTOR

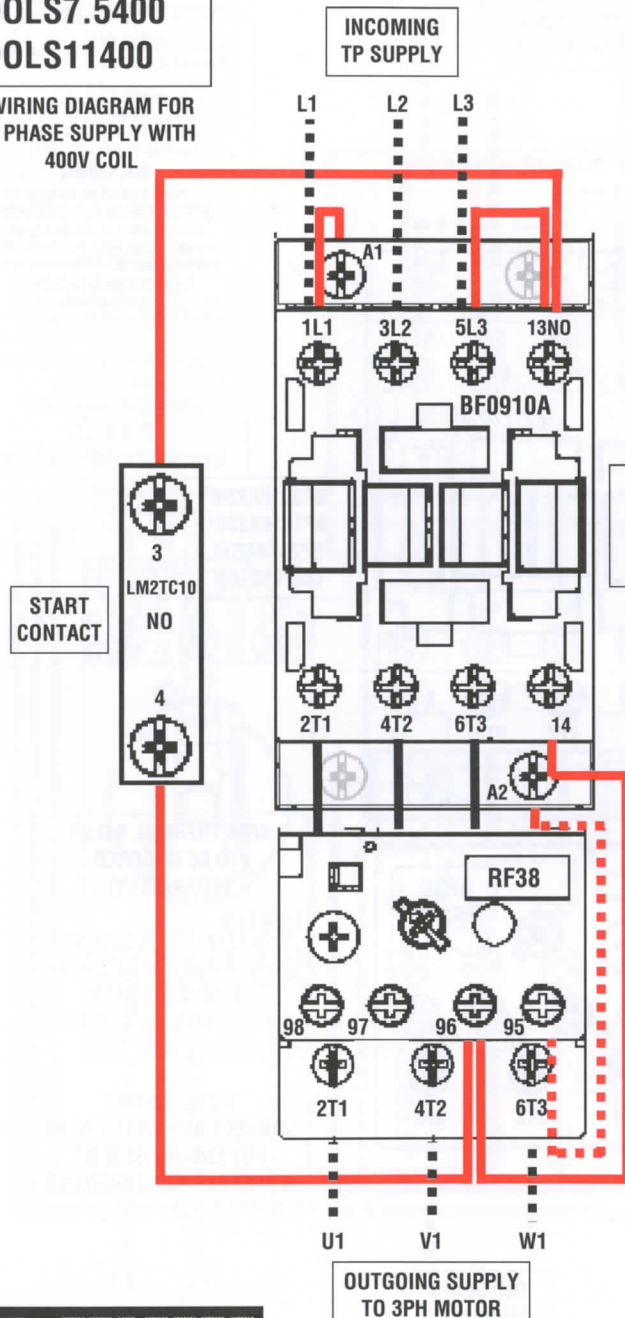
RF38 THERMAL RELAY
(TO BE ORDERED
SEPARATELY)

****INSTALLER TO CONNECT
COPPER 4TH PIN TO LOWER
A2 ON CONTACTOR
& FLYING LEADS TO 96
ONLY**

**NOTE: DO NOT
CONNECT ANY WIRES TO 95
BUT ENSURE 95 & A2
TERMINALS ARE TIGHTENED**

DOLS5.5400
DOLS7.5400
DOLS11400

WIRING DIAGRAM FOR
3 PHASE SUPPLY WITH
400V COIL



KEY
CONTROL WIRING — ALREADY INCLUDED
CONNECTIONS TO BE MADE BY INSTALLER - - - - -
**RF38 INTERNAL 95-A2 CONNECTION - . - . - .

WARNING
TO PREVENT RISK OF DAMAGE OR SAFETY HAZARDS, THIS EQUIPMENT SHOULD ONLY BE INSTALLED BY SUITABLY QUALIFIED OR COMPETENT PERSONS AND IN ACCORDANCE WITH ALL APPLICABLE ELECTRICAL REGULATIONS

BF0910A400/
BF1810A400/
BF2510A400
CONTACTOR

RF38 THERMAL RELAY
(TO BE ORDERED SEPARATELY)

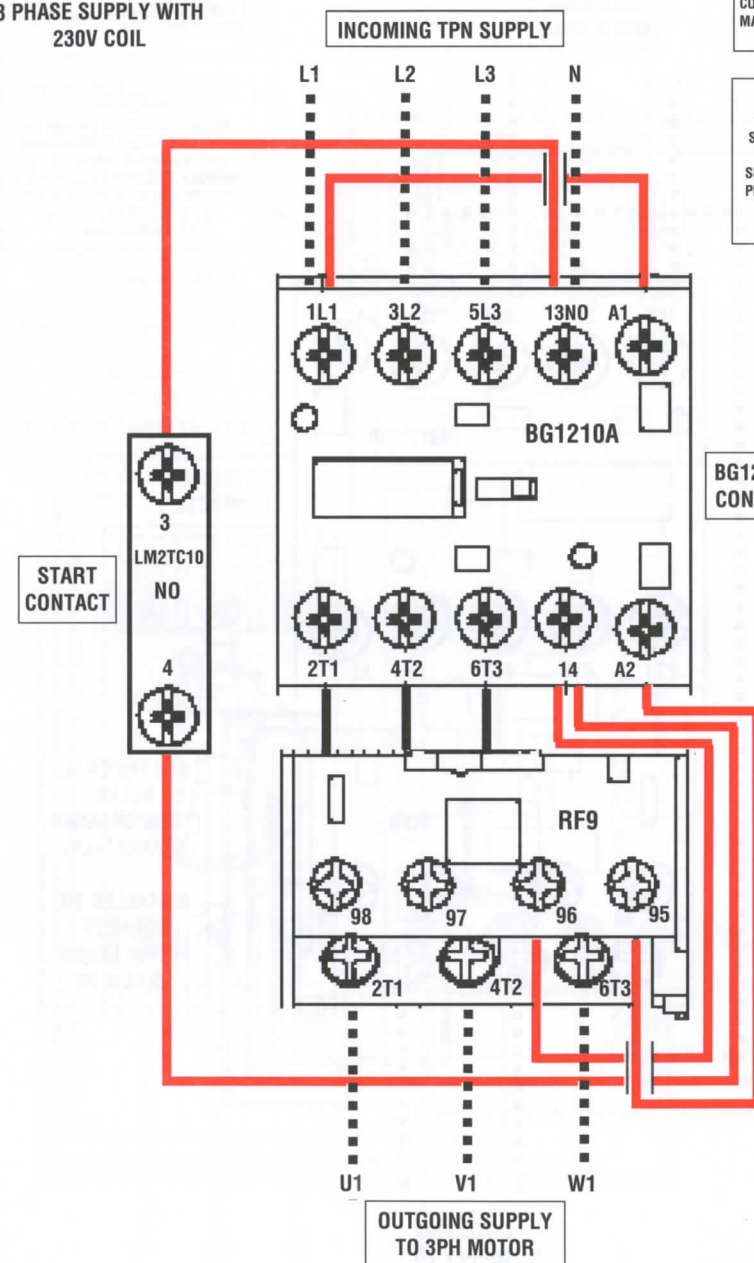
****INSTALLER TO CONNECT COPPER 4TH PIN TO LOWER A2 TERMINAL ON CONTACTOR & FLYING LEADS TO 96 ONLY**

DO NOT CONNECT ANY WIRES TO 95 BUT ENSURE 95 & A2 TERMINALS ARE TIGHTENED

LOVATO ELECTRIC LTD
LOVATO HOUSE
PROVIDENCE DRIVE
LYE
STOURBRIDGE DY9 8HQ
TEL: 08458 110023
FAX: 08458 110024
E-mail: sales@Lovato.co.uk
Web: www.Lovato.co.uk

DOLC5.5230

WIRING DIAGRAM FOR
3 PHASE SUPPLY WITH
230V COIL



KEY
CONTROL WIRING — ALREADY INCLUDED
CONNECTIONS TO BE MADE BY INSTALLER - - - - -

WARNING
TO PREVENT RISK OF DAMAGE OR SAFETY HAZARDS, THIS EQUIPMENT SHOULD ONLY BE INSTALLED BY SUITABLY QUALIFIED OR COMPETENT PERSONS AND IN ACCORDANCE WITH ALL APPLICABLE ELECTRICAL REGULATIONS

BG1210A230
CONTACTOR

RF9 THERMAL RELAY
(TO BE ORDERED SEPARATELY)

INSTALLER TO CONNECT FLYING LEADS TO 95 & 96

LSTAR003 | GB DP 09 10

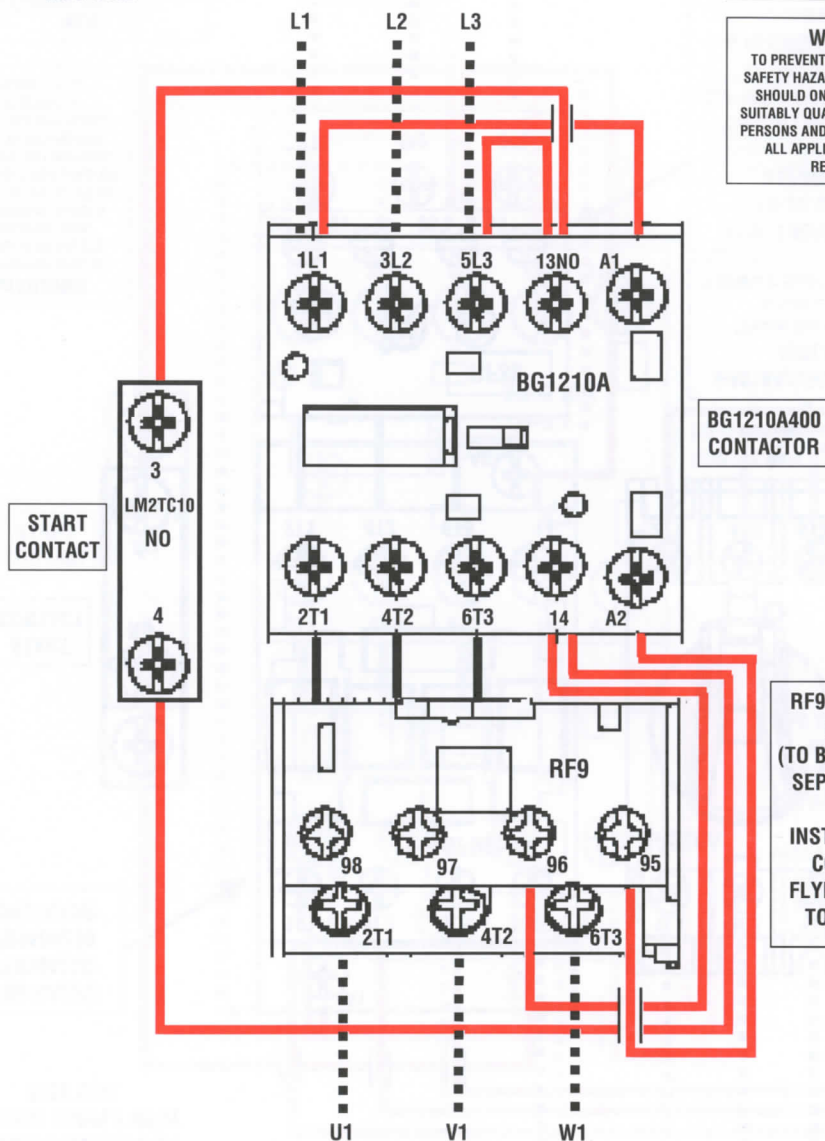
DOLC5.5400

WIRING DIAGRAM FOR
3 PHASE SUPPLY WITH
400V COIL

INCOMING
TP SUPPLY

KEY
CONTROL WIRING
ALREADY INCLUDED ———
CONNECTIONS TO BE
MADE BY INSTALLER - - - - -

WARNING
TO PREVENT RISK OF DAMAGE OR
SAFETY HAZARDS, THIS EQUIPMENT
SHOULD ONLY BE INSTALLED BY
SUITABLY QUALIFIED OR COMPETENT
PERSONS AND IN ACCORDANCE WITH
ALL APPLICABLE ELECTRICAL
REGULATIONS



BG1210A400
CONTACTOR

RF9 THERMAL
RELAY
(TO BE ORDERED
SEPARATELY)

INSTALLER TO
CONNECT
FLYING LEADS
TO 95 & 96

OUTGOING
SUPPLY TO
3PH MOTOR

DOLS5.5230

DOLS7.5230

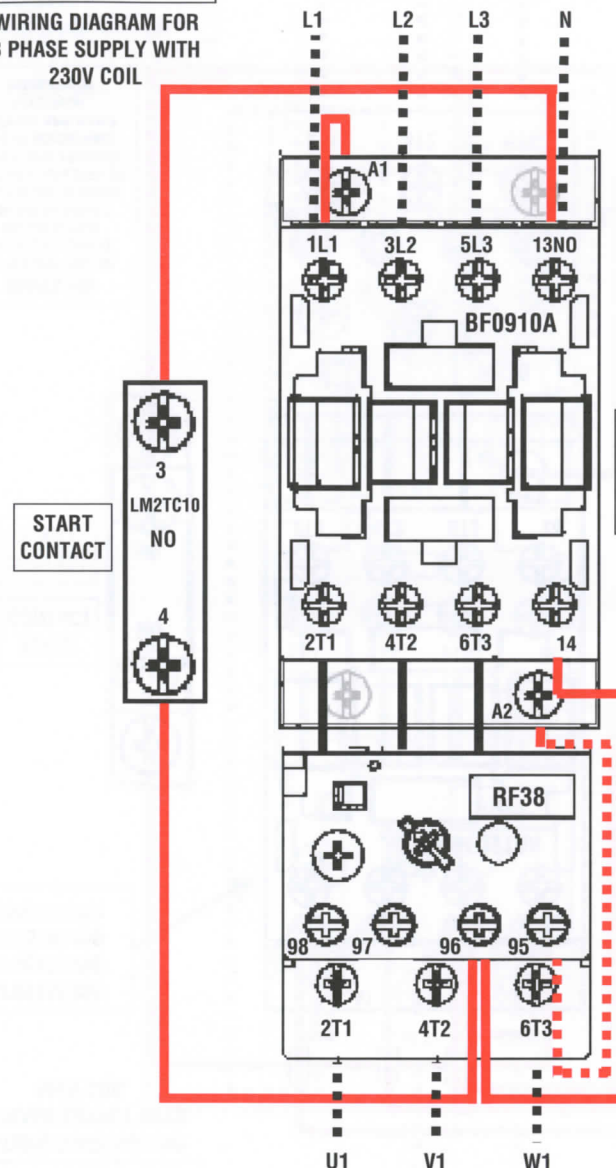
DOLS11230

WIRING DIAGRAM FOR
3 PHASE SUPPLY WITH
230V COIL

INCOMING TPN SUPPLY

KEY
CONTROL WIRING
ALREADY INCLUDED ———
CONNECTIONS TO BE
MADE BY INSTALLER - - - - -
**RF38 INTERNAL
95-A2 CONNECTION ———

WARNING
TO PREVENT RISK OF DAMAGE OR
SAFETY HAZARDS, THIS EQUIPMENT
SHOULD ONLY BE INSTALLED BY
SUITABLY QUALIFIED OR COMPETENT
PERSONS AND IN ACCORDANCE WITH
ALL APPLICABLE ELECTRICAL
REGULATIONS



BF0910A230/
BF1810A230/
BF2510A230
CONTACTOR

RF38 THERMAL RELAY
(TO BE ORDERED
SEPARATELY)

****INSTALLER TO CONNECT
COPPER 4TH PIN TO LOWER
A2 ON CONTACTOR
& FLYING LEADS TO 96
ONLY**

**DO NOT
CONNECT ANY WIRES TO 95
BUT ENSURE 95 & A2
TERMINALS ARE TIGHTENED**

OUTGOING
SUPPLY TO
3PH MOTOR