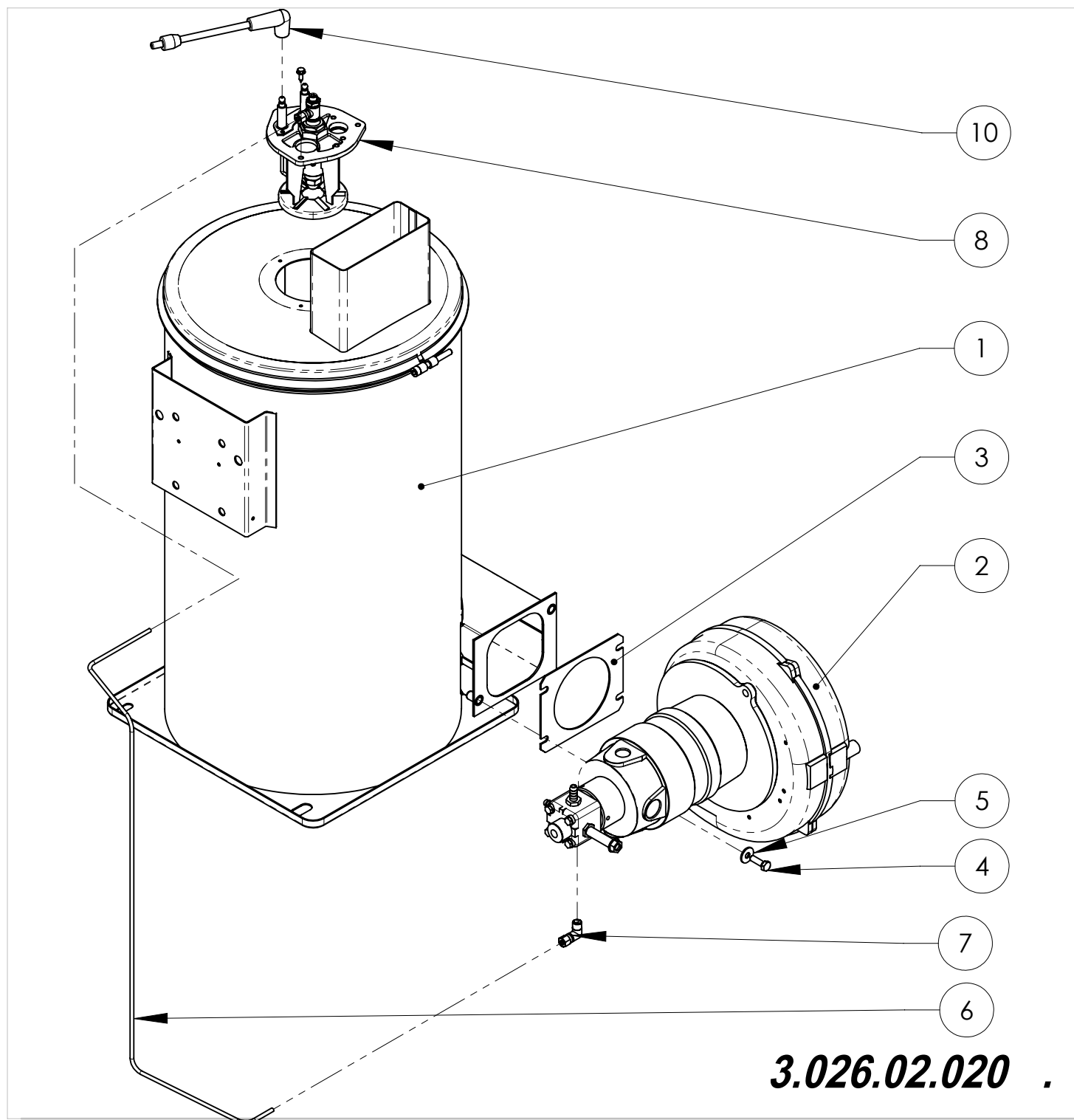


Caldaia 25L/min 12V-DC  
Kessel 25L/min 12V-DC

Boiler 25L/min 12V-DC  
Chaudière 25L/min 12V-DC



Caldera 25L/min 12V-DC



**3.026.02.020 .**

Pos.	Q.tà	Code	ITALIANO	INGLESE	TEDESCO	SPAGNOLO	FRANCESE
1	1	2.041.04.010	Caldaia 25L (W)	Boiler 25L (W)	Kessel 25L (W)	Caldera 25L (W)	Chaudière 25L (W)
2	1	3.038.02.018	Convogliatore 12V DX	Conveyor 12V DX	Foerderer 12V DX	Convoyador 12V DX	Convoyeur 12V DX
3	1	1.006.04.001	Guarnizione	Gasket	Dichtung	Guarnición	Garniture
4	2	4.002.44.001	Vite M6x20 UNI 5739	Screw M6x20 UNI 5739	Schrauben M6x20 UNI 5739	Tornillo M6x20 UNI 5739	Vis M6x20 UNI 5739
5	2	4.008.24.001	Rondella ø6x18x1.5	Washer ø6x18x1.5	Unterlegscheibe ø6x18x1.5	Arandela ø6x18x1.5	Rondelle ø6x18x1.5
6	1	1.044.54.012	Tubo	Pipe	Rohr	Tubo	Tuyau
7	1	3.050.14.001	Raccordo	Connection	Leiste	Filete	Filet
8	1	2.012.04.020	Coperchio elettrodi UG=1.65	Electrodes cover UG=1.65	Elektrodendeckel UG=1.65	Tapón electrodos UG=1.65	Couvercle électrodes UG=1.65
9	3	4.002.94.017	Vite autofilettante 3.9x13	Self-tapping Screw 3.9x13	Selbschneidendeschraube 3.9x13	Tornillo autoblocante 3.9x13	Vis autofilettant 3.9x13
10	2	2.020.04.012	Cavo elettrico L=600	Power cable L=600	Energie kabel L=600	Cable eléctrico L=600	Cable électrique L=600

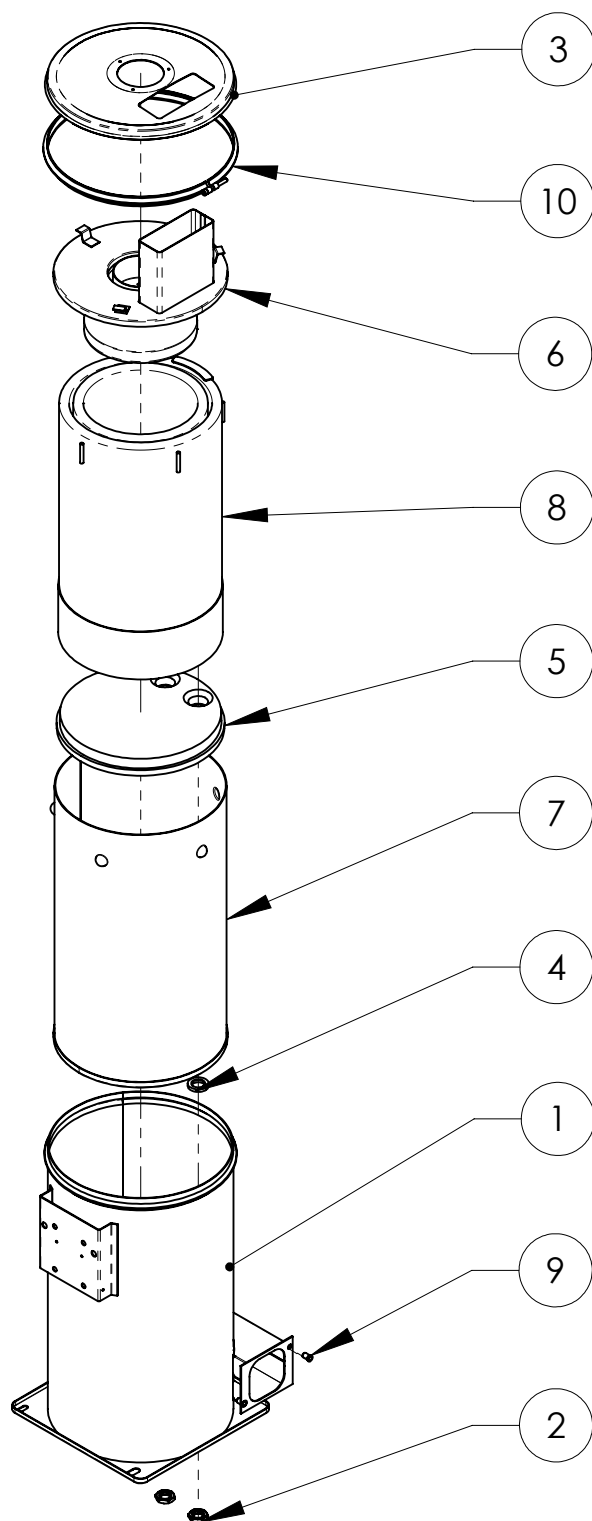
Caldaia 25L (W)

Chaudière 25L (W)

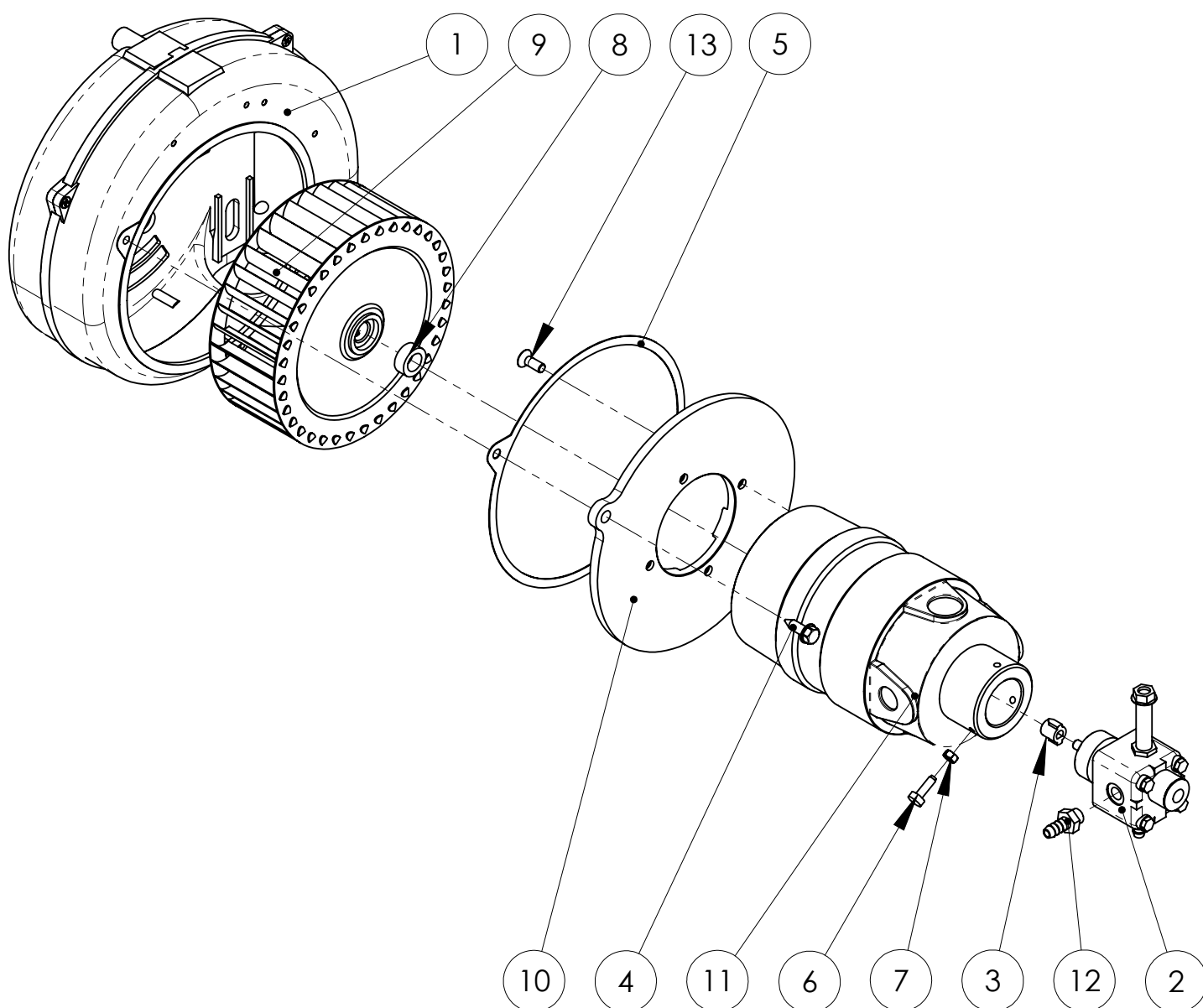
Boiler 25L (W)

Caldera 25L (W)

Kessel 25L (W)

**2.041.04.010 .F**

Pos.	Qt	Code	ITALIANO	INGLESE	TEDESCO	SPAGNOLO	FRANCESE
1	1	2.023.04.013	Camicia esterna W	External jacket W	Äusserer Mantel W	Camisa externa W	Chemise externe W
2	2	1.015.24.002	Ghiera	Ferrule	Zwinge	Abrazadera	Embout
3	1	1.054.04.006	Coperchio	Cover	Deckel	Tapa	Couvercle
4	2	1.060.04.018	Distanziale	Spacer	Distanztueck	Distanciador	Entretoise
5	1	1.094.04.005	Isolante termico 20-25L	Thermal insulator 20-25L	Waermeschutzstoff 20-25L	Aislador termal 20-25L	Isolateur thermique 20-25L
6	1	2.012.04.013	Coperchio W 20L	Cover W 20L	Deckel W 20L	Tapa W 20L	Couvercle W 20L
7	1	2.023.04.010	Camicia interna 25L	Internal jacket 25L	Innerer Mantel 25L	Camisa interior 25L	Chemise interne 25L
8	1	2.029.04.008	Serpentina 25L	Coil 25L	Schlange 25L	Serpentin 25L	Serpentin 25L
9	2	4.047.04.002	Inserto UNI 9202-A M6	Insert UNI 9202-A M6	Einsatz UNI 9202-A M6	Inserto UNI 9202-A M6	Insert UNI 9202-A M6
10	1	2.056.04.001	Fascetta ø317	Clamp ø317	Klemme ø317	Faja ø317	Petit bande ø317



**3.038.02.018 .**

Pos.	Q.tà	Code	ITALIANO	INGLESE	TEDESCO	SPAGNOLO	FRANCESE
1	1	2.017.22.003	Carter	Guard	Gehäuse	Càrter	Carter
2	1	3.015.24.007	Pompa DX	Pump DX	Pump DX	Bomba DX	Pompe DX
3	1	1.098.04.004	Giunto	Coupling	Kupplung	Acoplamiento	Accouplement
4	2	4.002.94.012	Vite autofilettante 6.3x20 AB 6950	Self-tapping Screw 6.3x20 AB 6950	Selbschneidendeschraube 6.3x20 AB 6950	Tornillo autoblocaante 6.3x20 AB 6950	Vis autofilettant 6.3x20 AB 6950
5	1	1.006.22.002	Guarnizione	Gasket	Dichtung	Guarnición	Garniture
6	3	1.004.04.001	Vite ø10 M5x20 (OT)	Screw ø10 M5x20 (OT)	Schrauben ø10 M5x20 (OT)	Tornillo ø10 M5x20 (OT)	Vis ø10 M5x20 (OT)
7	3	4.009.02.001	Dado M5 UNI5588	Nut M5 UNI5588	Mutter M5 UNI5588	Dado M5 UNI5588	Ecrou M5 UNI5588
8	1	1.060.02.011	Distanziale ø20	Spacer ø20	Distanzstueck ø20	Distanciador ø20	Entretoise ø20
9	1	1.073.04.011	Valvola Ø160 - ø12.7	Valve Ø160 - ø12.7	Ventil Ø160 - ø12.7	Válvula Ø160 - ø12.7	Valve Ø160 - ø12.7
10	1	1.074.02.045	Flangia	Flange	Flansch	Borde	Bride
11	1	3.002.04.003	Motore Elettrico 12V 250W 3000rpm	Electric Motor 12V 250W 3000rpm	Elektromotor 12V 250W 3000rpm	Motor Eléctrico 12V 250W 3000rpm	Moteur électrique 12V 250W 3000rpm
12	2	2.033.02.002	Portagomma	Hose fitting	Schlauchhalter	Portamanguera	Raccord pour tuyau
13	4	4.002.24.003	Vite M6x16	Screw M6x16	Schrauben M6x16	Tornillo M6x16	Vis M6x16

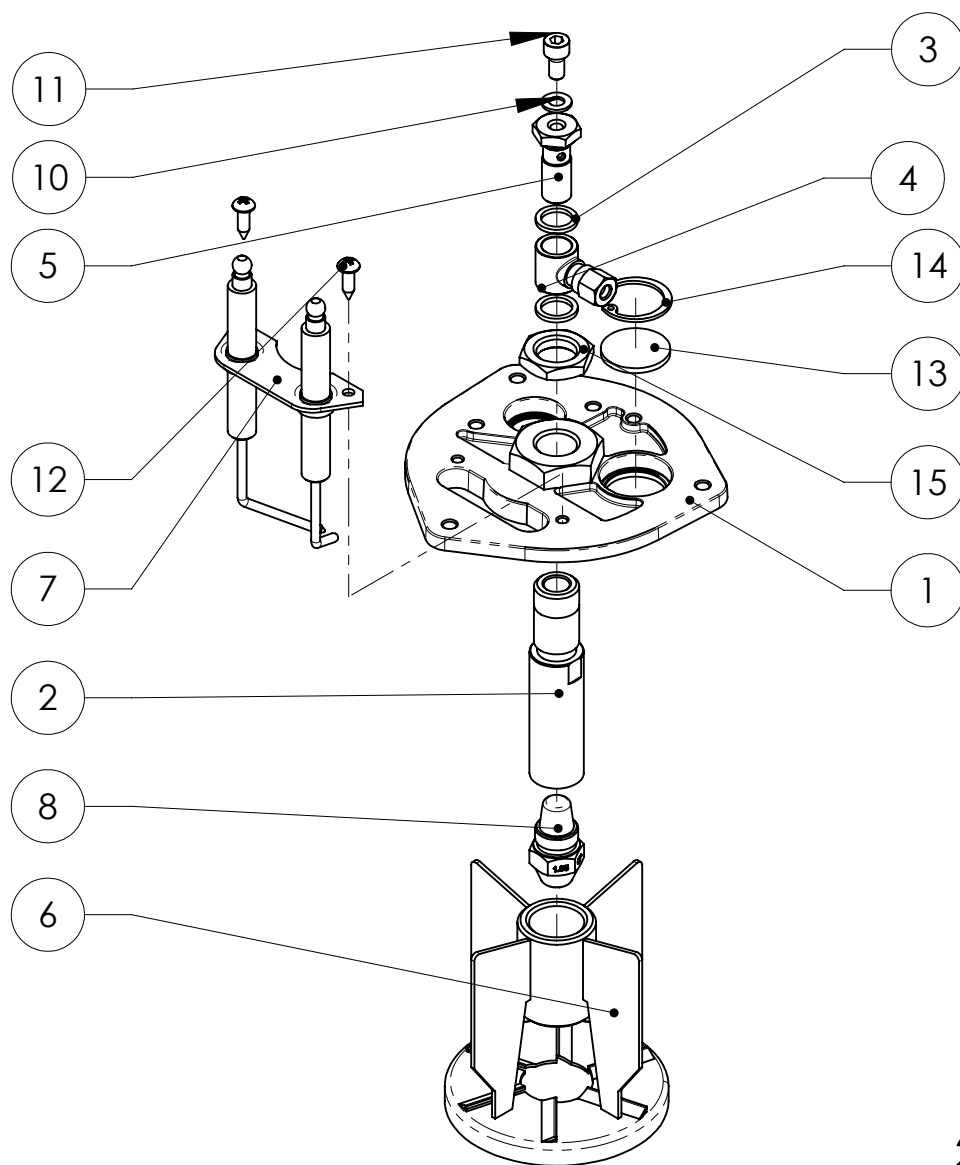
Coperchio elettrodi UG=1.65

Elektrodendeckel UG=1.65

Tapòn electrodos UG=1.65

Electrodes cover UG=1.65

Couvercle électrodes UG=1.65



**2.012.04.020** .

Pos.	Qt	Code	ITALIANO	INGLESE	TEDESCO	SPAGNOLO	FRANCESE
1	1	1.074.04.011	Flangia	Flange	Flansch	Borde	Bride
2	1	1.001.04.006	Raccordo 9/19 - G1/8	Connection 9/19 - G1/8	Leiste 9/19 - G1/8	Filete 9/19 - G1/8	Filet 9/19 - G1/8
3	2	4.008.12.005	Rondella	Washer	Unterlegscheibe	Arandela	Rondelle
4	1	3.050.34.001	Raccordo	Connection	Leiste	Filete	Filet
5	1	1.012.14.012	Tappo	Cap	Deckel	Tapón	Bouchon
6	1	2.009.04.002	Deflettore Work	Deflector Work	Deflektor Work	Deflector Work	Défecteur Work
7	1	2.032.04.004	Elettrodi	Electrodes	Elektrode	Electrodos	Electrodes
8	1	4.027.14.015	Ugello 1.65	Nozzle 1.65	Duse 1.65	Boquilla 1.65	Buse 1.65
9	1	4.005.14.004	Guarnizione	Gasket	Dichtung	Guarnición	Garniture
10	1	4.008.14.003	Rondella	Washer	Unterlegscheibe	Arandela	Rondelle
11	1	4.002.14.022	Vite M5x10 UNI5931-67	Screw M5x10 UNI5931-67	Schrauben M5x10 UNI5931-67	Tornillo M5x10 UNI5931-67	Vis M5x10 UNI5931-67
12	2	4.002.94.005	Vite autofilettante 3.9x13	Self-tapping Screw 3.9x13	Gewindeschneidschraube 3.9x13	Tornillo Self-tapping 3.9x13	Vies Autofilettante 3.9x13
13	1	1.102.04.001	Vetrino	Glass	Glass	Vidrio	Vèrre
14	1	4.025.04.002	Seeger	Seeger	Seeger	Seeger	Seeger
15	1	1.015.24.003	Ghiera	Ferrule	Zwinge	Abrazadera	Embout