



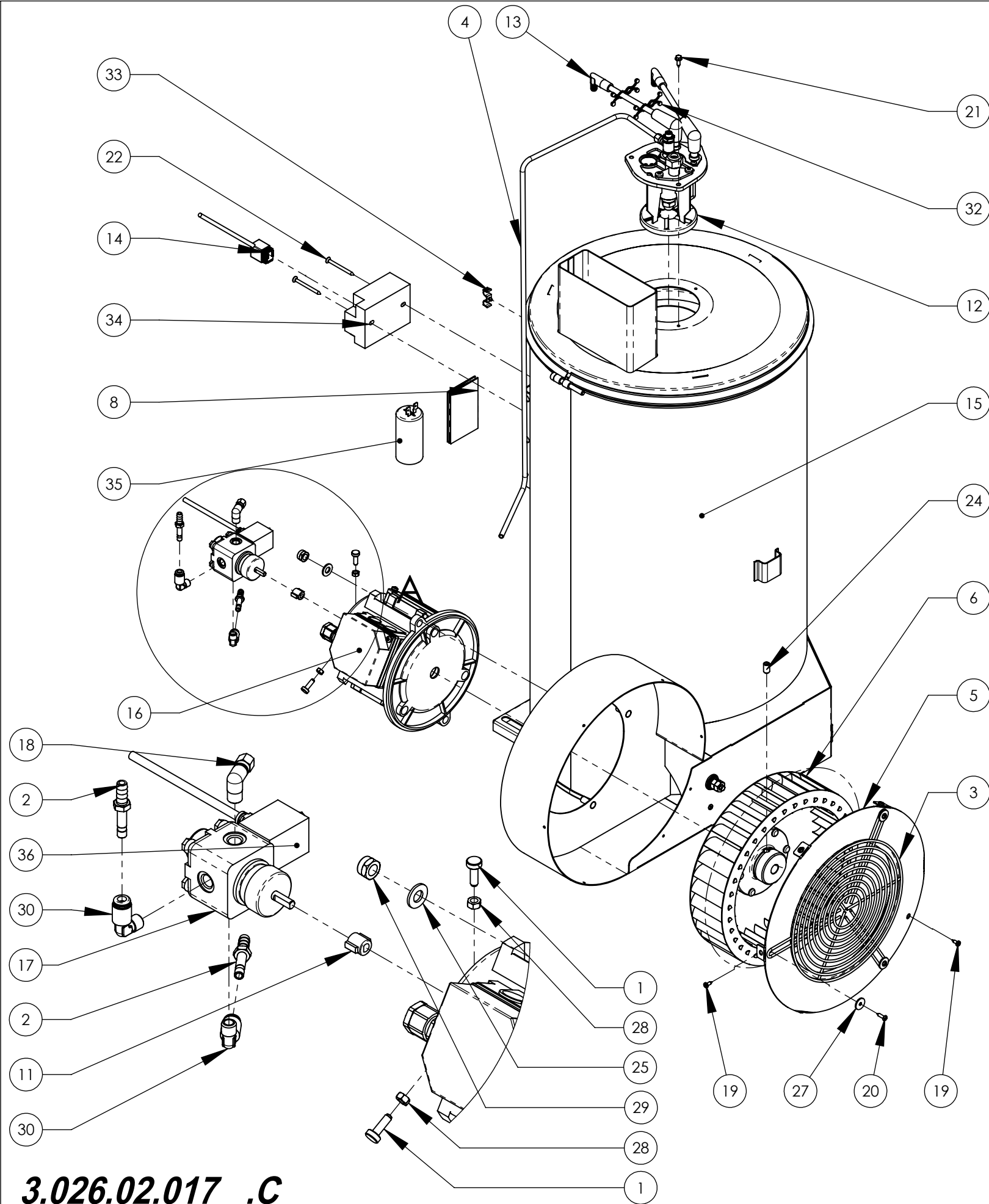
Caldaia 30 lit/min 220V 50Hz

Boiler 30 lit/min 220V 50Hz

Kessel 30 lit/min 220V 50Hz

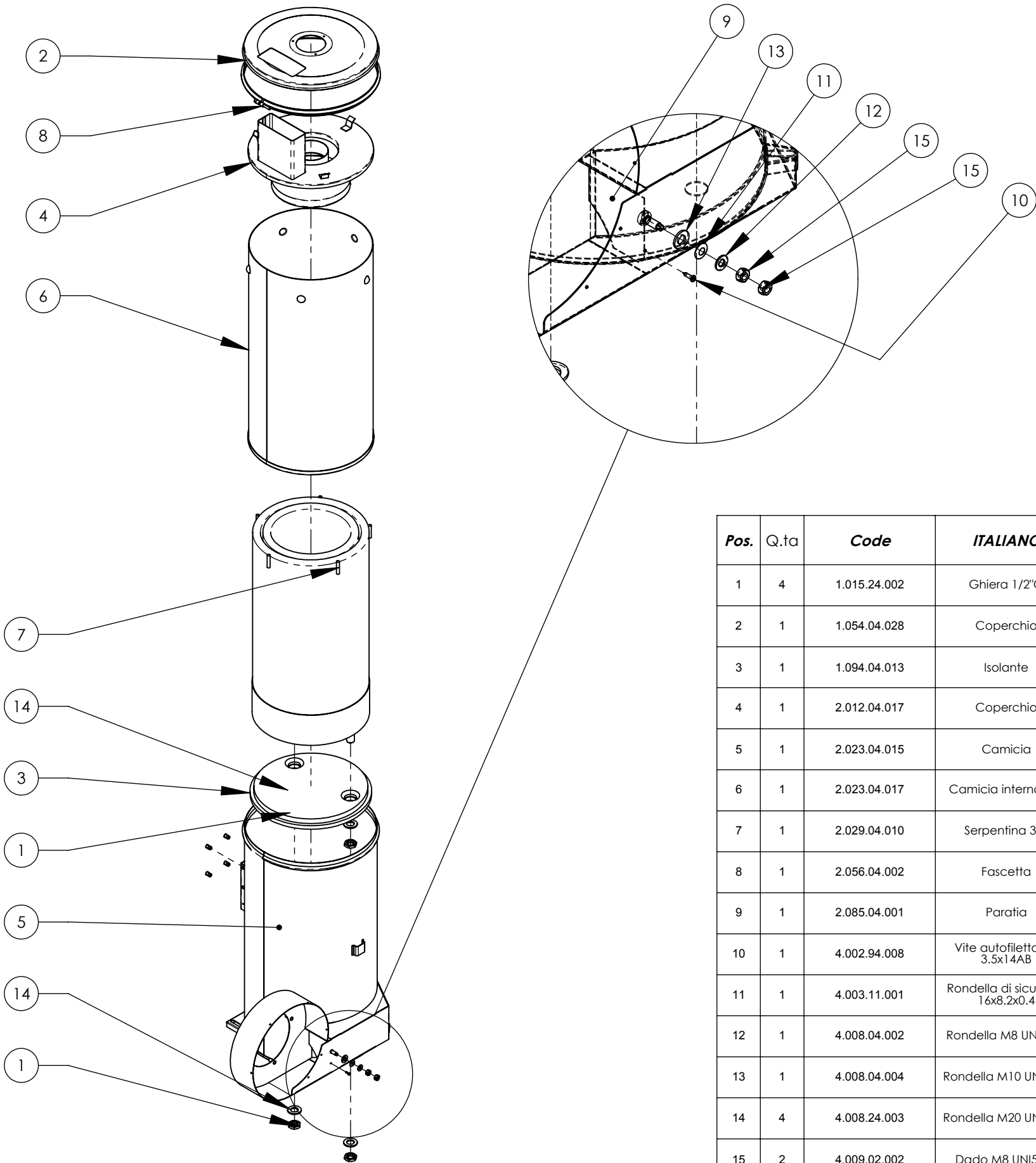
Chaudière 30 lit/min 220V 50Hz

Caldera 30 lit/min 220V 50Hz



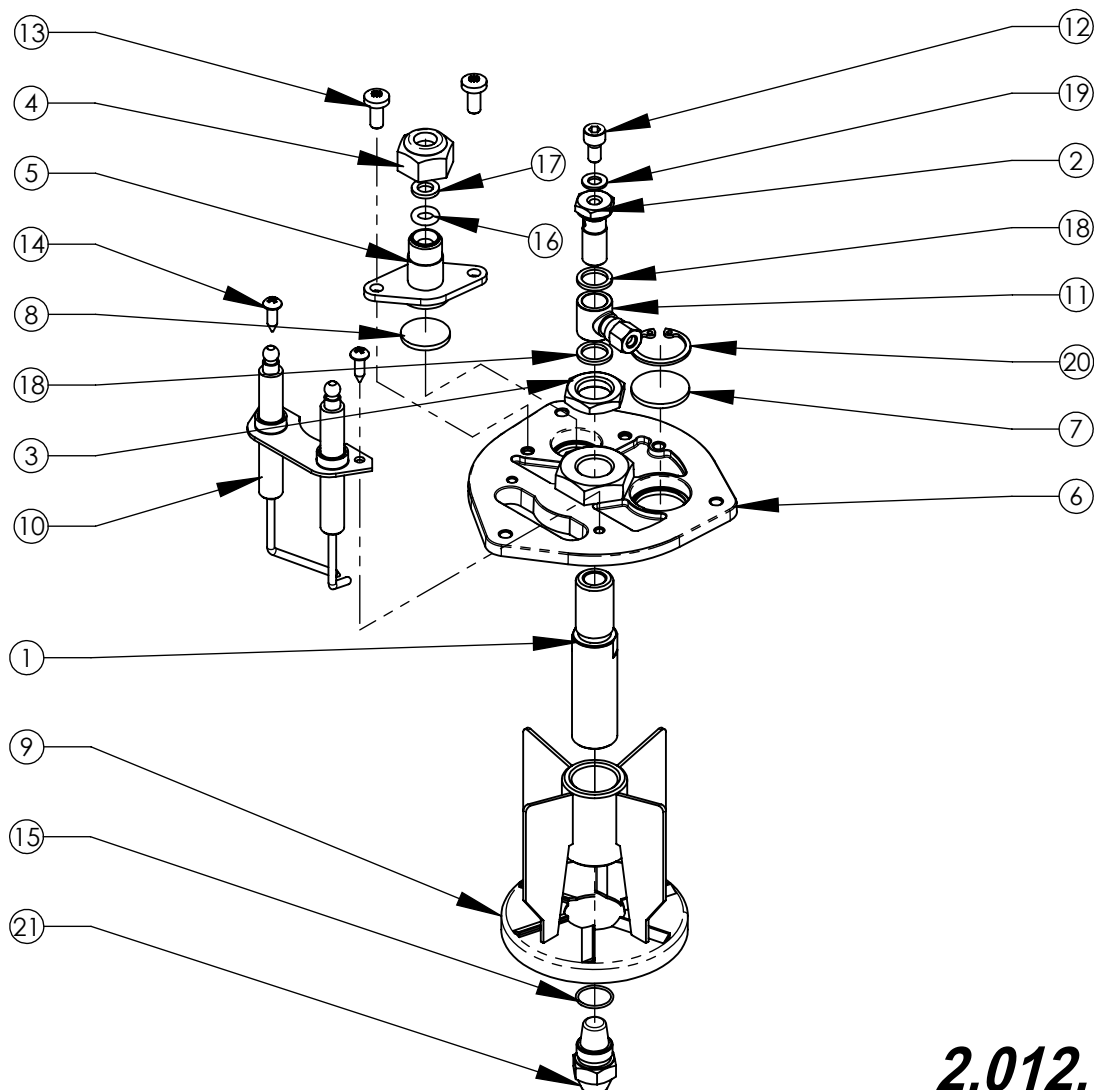
3.026.02.017 .C

Pos.	Q.tà	Code	ITALIANO	ENGLISH	DEUTSCH	ESPAÑOL	FRANCAIS
1	3	1.004.04.001	Vite ø10 M5x20 (OT)	Screw ø10 M5x20 (OT)	Schrauben ø10 M5x20 (OT)	Tornillo ø10 M5x20 (OT)	Vis ø10 M5x20 (OT)
2	2	1.005.04.002	Innesto rapido	Quick coupling	Schnelle kupplung	Enchufe rapido	Raccord rapid
3	1	1.009.04.002	Griglia controllo aria convogliatore	Grate for conveyor air check	Kontrollgitter Lüfterhaube	Rejilla de control aire transportador	Grille contrôle air convoyeur
4	1	1.044.54.008	Tubo di rame W6000	Branch tube W6000	Niederlassung Schlauch W6000	Tubo del ramo W6000	Tube de cuivre W6000
5	1	1.056.04.018	Boccaglio	Pipe union	Stutzen	Boca	Mamelon
6	1	1.073.04.009	Ventola	Impeller	Antreiber	Impledor	Roue à aubes
8	1	1.093.02.015	Schema collegamento caldaia 12/24V	Boilers connction 12/24V	Elektrish Verbindung 12/24V	Esquema colegamento calderas 12/24V	Schéma de connexion chaudières 12/24V
11	1	1.098.04.004	Giunto L15	Coupling L15	Kupplung L15	Acoplamiento L15	Accouplement L15
12	1	2.012.04.023	Coperchio elettrodi 2.50 60°B	Electrodes cover 2.50 60°B	Elektrodendeckel 2.50 60°B	Tapón electrodos 2.50 60°B	Coouvercle électrodes 2.50 60°B
13	2	2.020.04.035	Cavo L=600	Cable L=600	Kabel L=600	Cable L=600	Cable L=600
14	1	2.020.04.038	Cavo	Cable	Kabel	Cable	Cable
15	1	2.041.04.013	Caldaia	Boiler	Kessel	Caldera	Chaudière
16	1	3.002.24.007	Motore Elettrico MF230V50Hz	Electric Motor MF230V50Hz	Elektromotor MF230V50Hz	Motor Eléctrico MF230V50Hz	Moteur électrique MF230V50Hz
17	1	3.015.24.008	Pompa	Pump	Pump	Bomba	Pompe
18	1	3.050.14.001	Raccordo	Connection	Leiste	Filete	Filet
19	6	4.002.92.003	Vite autofilettante 3.5x10 AB	Self-tapping Screw 3.5x10 AB	Selbschneidendschraube 3.5x10 AB	Tornillo autoblocante 3.5x10 AB	Vis autofiletant 3.5x10 AB
20	3	4.002.94.008	Vite autofilettante 3.5x14AB	Self-tapping Screw 3.5x14AB	Selbschneidendschraube 3.5x14AB	Tornillo autoblocante 3.5x14AB	Vis autofiletant 3.5x14AB
21	3	4.002.94.017	Vite autofilettante 3.9x13	Self-tapping Screw 3.9x13	Selbschneidendschraube 3.9x13	Tornillo autoblocante 3.9x13	Vis autofiletant 3.9x13
22	2	4.002.94.019	Vite autofilettante 3.9x45 AB D7982	Self-tapping Screw 3.9x45 AB D7982	Selbschneidendschraube 3.9x45 AB D7982	Tornillo autoblocante 3.9x45 AB D7982	Vis autofiletant 3.9x45 AB D7982
23	2	4.002.94.032	Vite autofilettante TSP 5x70 TA H	Self-tapping Screw TSP 5x70 TA H	Selbschneidendschraube TSP 5x70 TA H	Tornillo autoblocante TSP 5x70 TA H	Vis autofiletant TSP 5x70 TA H
24	1	4.004.14.002	Grano M8x14	Grub screw M8x14	Duebel M8x14	Grano M8x14	Grain M8x14
25	2	4.008.04.002	Rondella M8 UNI6592	Washer M8 UNI6592	Unterlegscheibe M8 UNI6592	Arandela M8 UNI6592	Rondelle M8 UNI6592
26	2	4.008.04.003	Rondella M6 UNI6593	Washer M6 UNI6593	Unterlegsscheibe M6 UNI6593	Arandela M6 UNI6593	Rondelle M6 UNI6593
27	3	4.008.04.007	Rondella M4 UNI6593	Washer M4 UNI6593	Unterlegscheibe M4 UNI6593	Arandela M4 UNI6593	Rondelle M4 UNI6593
28	3	4.009.02.001	Dado M5 UNI5588	Nut M5 UNI5588	Mutter M5 UNI5588	Dado M5 UNI5588	Ecrou M5 UNI5588
29	2	4.009.12.001	Dado M8 UNI7474	Nut M8 UNI7474	Mutter M8 UNI7474	Dado M8 UNI7474	Ecrou M8 UNI7474
30	2	4.012.04.013	Raccordo a L G1/4	L Connection G1/4	Leiste L G1/4	Filete L G1/4	Filet L G1/4
32	2	4.022.04.016	Fascetta 2x ø5.1/ø7.6	Clamp 2x ø5.1/ø7.6	Klemme 2x ø5.1/ø7.6	Faja 2x ø5.1/ø7.6	Petit bande 2x ø5.1/ø7.6
33	1	4.022.04.017	Fascetta 2xø6.4	Clamp 2xø6.4	Klemme 2xø6.4	Faja 2xø6.4	Petit bande 2xø6.4
34	1	4.030.04.010	Trasformatore 20mA 230V	Transformer 20mA 230V	Stromwandler 20mA 230V	Transformador 20mA 230V	Transformateur 20mA 230V
35	1	4.035.02.011	Condensatore 10mf	Condenser 10mf	Kondensator 10mf	Condensador 10mf	Condenseur 10mf
36	1	4.040.04.006	Bobina 24V	Coil 24V	Spule 24V	Bobina 24V	Bobine 24V



Pos.	Q.ta	Code	ITALIANO	INGLESE	TEDESCO	SPAGNOLO	FRANCESE
1	4	1.015.24.002	Ghiera 1/2"G	Ferrule 1/2"G	Zwinge 1/2"G	Abrazadera 1/2"G	Embout 1/2"G
2	1	1.054.04.028	Coperchio	Cover	Deckel	Tapa	Couvercle
3	1	1.094.04.013	Isolante	Insulator	Isolierstoff	Aislador	Isolateur
4	1	2.012.04.017	Coperchio	Cover	Deckel	Tapa	Couvercle
5	1	2.023.04.015	Camicia	Jacket	Mantel	Camisa	Chemise
6	1	2.023.04.017	Camicia interna 30L	Internal jacket 30L	Innerer Mantel 30L	Camisa interior 30L	Chemise interne 30L
7	1	2.029.04.010	Serpentina 30L	Coil 30L	Schlange 30L	Serpentin 30L	Serpentin 30L
8	1	2.056.04.002	Fascetta	Clamp	Klemme	Faja	Petit bande
9	1	2.085.04.001	Paratia	Bulkhead	Schott	Mamparo	Cloison
10	1	4.002.94.008	Vite autofilettante 3.5x14AB	Self-tapping Screw 3.5x14AB	Selbschneidendeschraube 3.5x14AB	Tomillo autoblocante 3.5x14AB	Vis autofiletant 3.5x14AB
11	1	4.003.11.001	Rondella di sicurezza 16x8.2x0.4	Safety washer 16x8.2x0.4	Sicherheits Scheibe 16x8.2x0.4	Arandela de seguridad 16x8.2x0.4	Rondelle de sûreté 16x8.2x0.4
12	1	4.008.04.002	Rondella M8 UNI6592	Washer M8 UNI6592	Unterlegscheibe M8 UNI6592	Arandela M8 UNI6592	Rondelle M8 UNI6592
13	1	4.008.04.004	Rondella M10 UNI6592	Washer M10 UNI6592	Unterlegscheibe M10 UNI6592	Arandela M10 UNI6592	Rondelle M10 UNI6592
14	4	4.008.24.003	Rondella M20 UNI6592	Washer M20 UNI6592	Unterlegscheibe M20 UNI6592	Arandela M20 UNI6592	Rondelle M20 UNI6592
15	2	4.009.02.002	Dado M8 UNI5588	Nut M8 UNI5588	Mutter M8 UNI5588	Dado M8 UNI5588	Ecrou M8 UNI5588
16	4	4.047.04.002	Inserto UNI 9202-A M6	Insert UNI 9202-A M6	Einsatz UNI 9202-A M6	Inserto UNI 9202-A M6	Insert UNI 9202-A M6

2.041.04.013 .B



2.012.04.023.E

Pos.	Q.ta	Code	ITALIANO	INGLESE	TEDESCO	SPAGNOLO	FRANCESE
1	1	1.001.04.006	Raccordo 9/19 - G1/8	Connection 9/19 - G1/8	Leiste 9/19 - G1/8	Filete 9/19 - G1/8	Filet 9/19 - G1/8
2	1	1.012.14.012	Tappo FORATO G1/8+CONTR.PRESS.M5	Cap FORATO G1/8+CONTR.PRESS.M5	Deckel FORATO G1/8+CONTR.PRESS.M5	Tapón FORATO G1/8+CONTR.PRESS.M5	Bouchon FORATO G1/8+CONTR.PRESS.M5
3	1	1.015.24.003	Ghiera	Ferrule	Zwinge	Abrazadera	Embout
4	1	1.015.32.008	Ghiera G1/4"	Ferrule G1/4"	Zwinge G1/4"	Abrazadera G1/4"	Embout G1/4"
5	1	1.074.04.005	Flangia	Flange	Flansch	Borde	Bride
6	1	1.074.04.018	Flangia M15x1.5 (CF)	Flange M15x1.5 (CF)	Flansch M15x1.5 (CF)	Borde M15x1.5 (CF)	Bride M15x1.5 (CF)
7	1	1.102.04.001	Vetrino	Glass	Glass	Vidrio	Vèrre
8	1	1.102.04.003	Vetrino ø19	Glass ø19	Glass ø19	Vidrio ø19	Vèrre ø19
9	1	2.009.04.002	Deflettore Work	Deflector Work	Deflektor Work	Deflector Work	Défecteur Work
10	1	2.032.04.004	Elettrodi	Electrodes	Elektrode	Electrodos	Electrodes
11	1	3.050.34.001	Raccordo	Connection	Leiste	Filete	Filet
12	1	4.002.14.022	Vite M5x10 UNI5931	Screw M5x10 UNI5931	Schrauben M5x10 UNI5931	Tomillo M5x10 UNI5931	Vis M5x10 UNI5931
13	2	4.002.72.001	Vite M5x12 UNI7687	Screw M5x12 UNI7687	Schrauben M5x12 UNI7687	Tomillo M5x12 UNI7687	Vis M5x12 UNI7687
14	2	4.002.94.005	Vite autofilettante 3.9x13	Self-tapping Screw 3.9x13	Gewindeschneidschraube 3.9x13	Tomillo Self-tapping 3.9x13	Vies Autofilettante 3.9x13
15	1	4.005.14.004	OR 0130-1	O-ring 0130-1	O-ring 0130-1	OR 0130-1	Joint torique 0130-1
16	1	4.005.22.009	OR 3024	O-ring 3024	O-ring 3024	OR 3024	Joint torique 3024
17	1	4.008.02.001	Rondella 6.4x11x1.6 DIN433 UNI6592 ZEB	Washer 6.4x11x1.6 DIN433 UNI6592 ZEB	Unterlegscheibe 6.4x11x1.6 DIN433 UNI6592 ZEB	Arandela 6.4x11x1.6 DIN433 UNI6592 ZEB	Rondelle 6.4x11x1.6 DIN433 UNI6592 ZEB
18	2	4.008.12.005	Rondella Rame G1/8	Copper washer G1/8	Kupferunterlegsscheibe G1/8	Arandelade cobre G1/8	Rondelle cuivre G1/8
19	1	4.008.14.003	Rondella Rame M5	Copper washer M5	Kupferunterlegsscheibe M5	Arandela de cobre M5	Rondelle cuivre M5
20	1	4.025.04.002	Seeger	Seeger	Seeger	Seeger	Seeger
21	1	4.027.14.018	Ugello 2.5 60°B	Nozzle 2.5 60°B	Duse 2.5 60°B	Boquilla 2.5 60°B	Buse 2.5 60°B