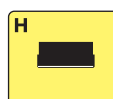
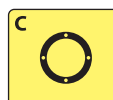
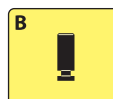
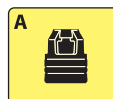
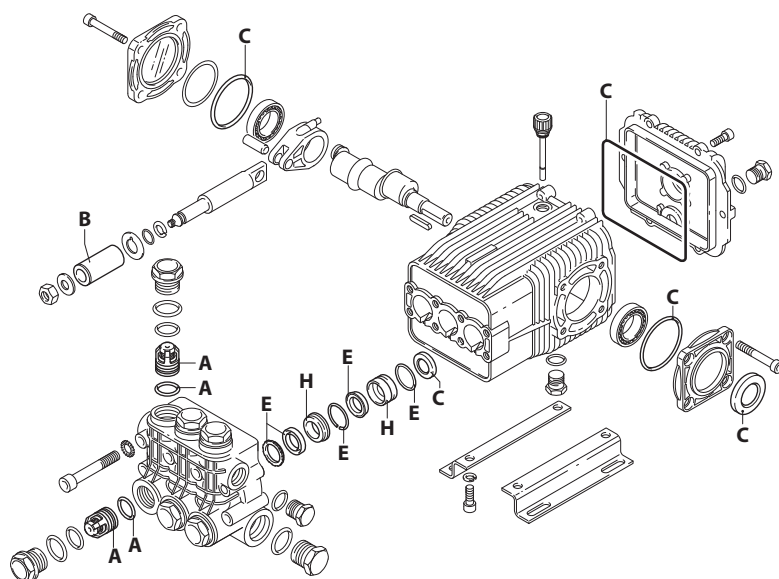


UN002607-DQ

KIT RICAMBI / PART KITS



UN002608-DQ

194 Series

XW 1450 rpm N version ø 24 mm



15.15 (20352) 21.20 (20174) 26.12 (20175) 26.23 (20177) 30.20 DX (20060)
15.20 (20353) 21.25 (20058) 26.15 (20176) 30.10 (20178) 30.20 SX (20270)
15.30 (20592) 21.28 (21136) 26.20 (20059) 30.15 (20179) 30.25 (21137)

Pos.	Cod.	Denominazione	Description	Qt	Note	Pos.	Cod.	Denominazione	Description	Qt	Note
1	1940260	Vite	TCEI M10x80	Screw	8	C=50Nm	33	1941330	Corpo pompa	1	
2	650530	Rondella		Washer	8		34	1140370	Tappo	1	
3	1940140	Tappo		Plug	6	C=68Nm	35	1260250	Indicatore livello	1	③
4	1940150	Anello antiestrusione		Ring	6		36	1260430	Anello	1	③
5	1140450	Guarnizione OR	Ø 20,24x2,62	O-ring	12		37	1940410	Guarnizione OR	Ø 132x3	
6	1949050	Valvola completa		Complete valve	6		38	1200430	Vite	TCEI M6x16	Screw
7	1940021	Testa		Head	1	● ◆ ○ ⊕	39	1949010	Coperchio completo	Cover	1
	1941210	Testa		Head	1	▲	40	1780690	Disco	Plate	1
8	550350	Guarnizione OR	Ø 23,81X2,62	O-ring	1		41	1140450	Guarnizione OR	Ø 20,24x2,62	O-ring
9	1140300	Tappo	3/4" G	Plug	1	C=35Nm	42	820680	Anello tenuta	Ring	1
10	1980740	Tappo	3/8" G ottone	Plug	1	C=25Nm	43	1940560	Anello tenuta	Ring	3
11	740290	Guarnizione OR	Ø 14x1,78	O-ring	3	③	44	1940370	Piede	Foot	2
12	1940440	Guarnizione	Ø 20	Gasket	3	● ◆ ○ ⊕ (a)	45	1940380	Vite	TCEI 10x18	Screw
	1940270	Guarnizione	Ø 22	Gasket	3	▲ (a)	46	200231	Rondella	Washer	4
13	1940430	Guida pistone anteriore Ø 20		Piston guide	3	● ◆ ○ ⊕	47	1941240	Supporto	Support	1
	1940200	Guida pistone anteriore Ø 22		Piston guide	3	▲	51	1941220	Guarnizione tagliato Ø22	Gasket	3
14	1940470	Guarnizione	Ø 20	Gasket	3	● ◆ ○ ⊕ ⊗	60	1949200	Premontaggio testa	Head assembly	1
	1940480	Guarnizione	Ø 22	Gasket	3	▲ (a)		1949203	Premontaggio testa	Head assembly	1
15	1940450	Guida pistone posteriore Ø 20		Piston guide	3	● ◆ ○ ⊕	75	1941270	Indicatore livello	Level gauge	1
	1940460	Guida pistone posteriore Ø 22		Piston guide	3	▲	76	100410	Guarnizione OR	Ø 34,6x2,62	O-ring
16	820490	Guarnizione OR	Ø 34,65x1,78	O-ring	3		77	1941260	Disco	Plate	1
17	1940570	Dado		Nut	3	⊗ C=12Nm	78	1941290	Anello	Ring	1
18	1940580	Rondella		Washer	3		82	1980740	Tappo	3/8" G ottone	Plug
19	1420430	Pistone	Ø 20	Piston	3	● ◆ ○ ⊕					
	1420120	Pistone	Ø 22	Piston	3	▲					
20	880840	Guarnizione OR	Ø 9,25x1,78	O-ring	3						
21	960460	Disco		Plate	3						
22	1940120	Anello antiestrusione		Ring	3						
23	1940070	Pistone di guida		Piston	3						
24	1940060	Perno		Hub pin	3						
25	1941380	Guarnizione OR	Ø 66,34x2,62	O-ring	2						
26	1941390	Spessore 0,05 mm		Shim 0.05 mm	1÷3						
	1941400	Spessore 0,10 mm		Shim 0.10 mm	1÷3						
	1941410	Spessore 0,19 mm		Shim 0.19 mm	1÷3						
	1941420	Spessore 0,25 mm		Shim 0.25 mm	1÷3						
27	1949011	Coperchio		Cover	1						
28	850370	Vite	TCEI M8x16	Screw	8	C=24,5Nm					
29	1941370	Cuscinetto		Bearing	2	●					
	1140410	Cuscinetto		Bearing	2	◆ ○ ⊕ ▲					
30	1940051	Biella alluminio		Connecting-rod	3	⊗ C=24,5Nm					
31	1940520	Albero marcato 5		Shaft	1	● ◆					
	1940180	Albero marcato 3		Shaft	1	○					
	1940160	Albero marcato 1		Shaft	1	⊕ ▲					
32	650250	Linguetta		Key	1						

③ Compreso nel cod. 1949010 / Part of part n° 1949010

④ Compreso nel cod. 1949011 / Part of part n° 1949011

KIT RICAMBI - PART KITS

A=KIT 2780 valvole valves		B=KIT 2650 ø 20 pistoni pistons		B=KIT 1891 ø 22 pistoni pistons		C=KIT 2873 tenute olio oil seals	
Pos.	Q.ty	Pos.	Q.ty	Pos.	Q.ty	Pos.	Q.ty
5	6	19	3	19	3	25	2
6	6					37	1
						42	1
						43	3

E=KIT 2782 ø 20 tenute acqua water seals		E=KIT 2783 ø 22 tenute acqua water seals		H=KIT 2784 ø 20 guida pistoni pistons guide		H=KIT 2785 ø 22 guida pistoni pistons guide	
Pos.	Q.ty	Pos.	Q.ty	Pos.	Q.ty	Pos.	Q.ty
12	3	12	3	13	3	13	3
14	3	14	3	15	3	15	3
16	3	16	3				
51	3	51	3				

SIMBOLOGIA - SYMBOLS

Ø 20	Ø 20	Ø 20	Ø 22
● Per / For XW 15.15 cod. 20352 XW 15.20 cod. 20353	○ Per / For XW 21.20 cod. 20714 XW 21.25 cod. 20058 XW 21.28 cod. 21136	⊕ Per / For XW 26.12 cod. 20175 XW 26.15 cod. 20176 XW 26.20 cod. 20059 XW 26.23 cod. 20177	▲ Per / For XW 30.10 cod. 20178 XW 30.15 cod. 20179 XW 30.20 DX cod. 20060 XW 30.20 SX cod. 20270 XW 30.25 cod. 21137
◆ Per / For XW 15.30 cod. 20592			

C Tolleranza coppia di serraggio +0÷-10% / Tightening torque tolerance +0÷-10%

⊗ Avvitare con Loxeal 55-14 / Screw with Loxeal 55-14

⊗ Lubrificare con grasso Molykote PG54 solo sul diametro INTERNO / Lubricate with grease Molykote PG54 on the INNER diameter only

(a) Montare con attrezzo speciale cod. 1940670 / Fit with special tool code nr. 1940670

(b) Montare anello tenuta con attrezzo cod. 1941990 / Fit the seal with tool code nr. 1941990

@ Posizionamento targa di identificazione / Identification plate positioning

Olio - Oil	
Tipo / Type	Quantità / Quantity
SAE 15W40	0,9 Kg