

E2B2008 - E2B2808 - E2B2010 - E2C2109 E2C2809 - E2C2111 - E2C2112 - E2D2010 E2D2810 - E2D2011 - E2D2811 - E2D2812 E2D2013 - E2D2813 - E2D2015 - E2D2016 E2E2108 - E2E2808 - E2E2810 - E2E2111 E2E2812 - E2E2113 - E2E2813 - E2E2815 E2E2116
--

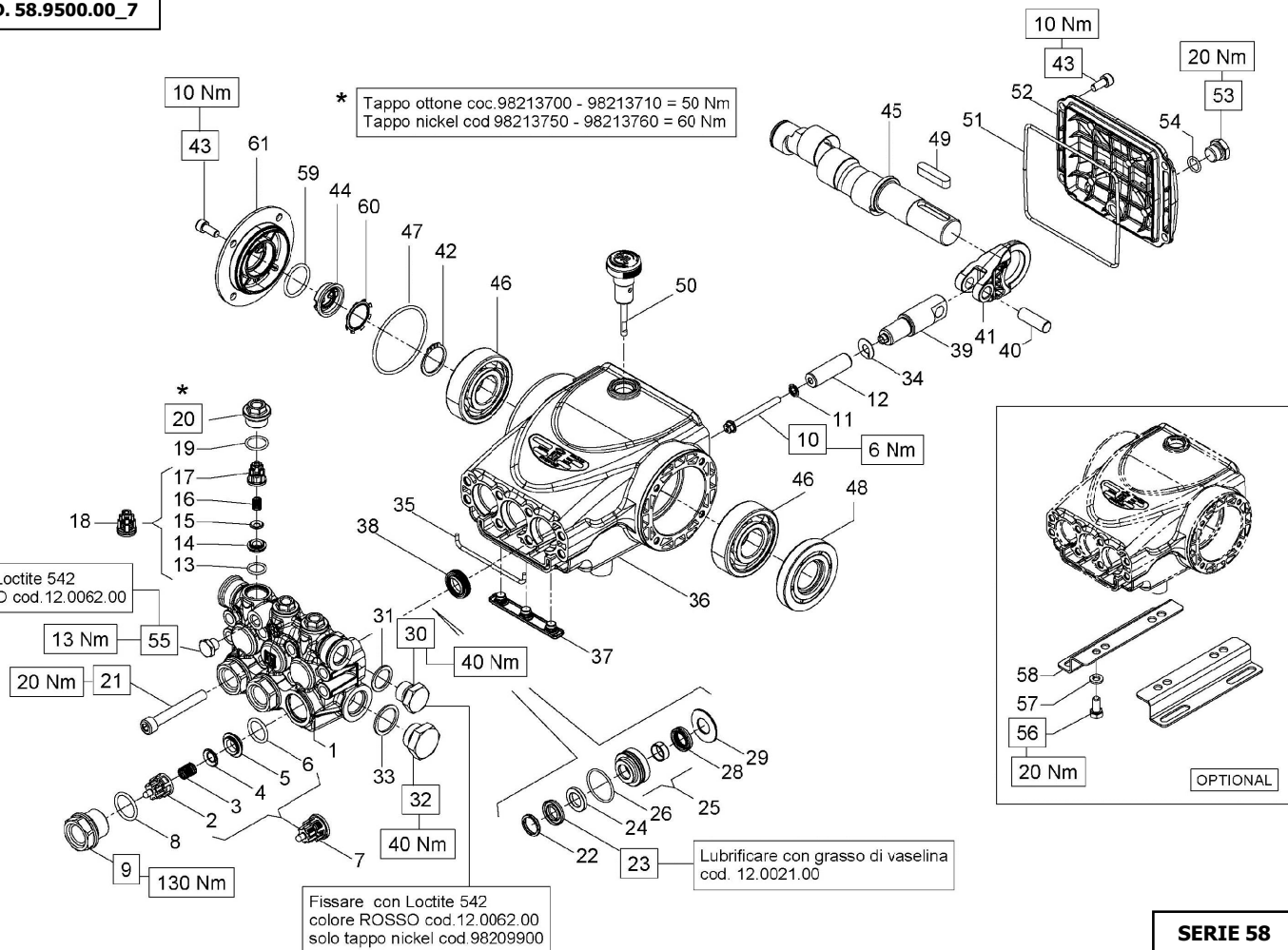
PISTON - PISTONE D. 13	PISTON - PISTONE D. 15
E2B2808 - E2C2809 - E2D2810 E2D2811 - E2D2812 - E2D2813 E2E2808 - E2E2810 - E2E2812 E2E2813 - E2E2815	E2B2008 - E2B2010 - E2C2109 E2C2111 - E2C2112 - E2D2010 E2D2011 - E2D2013 - E2D2015 E2D2016 - E2E2108 - E2E2116 E2E2113 - E2E2111

POS	COD.	DESCRIZIONE – DESCRIPTION - KIT	NR
1	58.1200.41 58.1201.41	Testata pompa D. 13 Testata pompa D. 15	1
2	36.2025.51	Guida valvola d'aspirazione 269	3
3	94.7376.00	Molla Dm. 9.4x14.8 269	3
4	36.2001.76	Valvola sferica 269	3
5	36.2003.66	Sede valvola d'aspirazione 269	3
6	90.3841.00	OR D. 17.13x2.62 NBR 70SH 3068 269	3
7	36.7115.01	Gr. valvola d'aspirazione 269	3
8	90.3847.00	OR D. 20.29x2.62 NBR 90SH 3081 270	3
9	98.2226.00	Tappo M24x1.5x16.7 270	3
10	99.1690.00	Vite M5x55 270	3
11	96.6905.00	Rosetta D. 5.0x11.5x0.4 270	3
12	58.0400.09 58.0401.09	Pistone D. 13x42 Pistone D. 15x42 270	3
13	90.3674.00	OR D. 12.00x2.00 NBR 70SH 269	3
14	36.2113.66	Sede valvola di mandata 269	3
15	36.2112.76	Valvola sferica 269	3
16	94.7333.00	Molla Dm. 6.2x10.4 269	3
17	36.2111.51	Guida valvola di mandata 269	3
18	36.7193.01	Gr. valvola mandata 269	3
19	90.3593.00	OR D. 15.60x1.78 NBR 70SH 2062 270	3

KIT RICAMBI – SPARE KITS				PISTON - PISTONE D. 13		PISTON - PISTONE D. 15	
KIT NR.	KIT 269	KIT 270	KIT 271	KIT 272	KIT 275	KIT 273	KIT 276
Posizioni include Positions included	2 - 3 - 4 5 - 6 - 13 14 - 15 - 16 17 - (7) - (18)	8 - 9 19 - 20	38	22 - 23 24 - 26 28	22 - 23 24 - 25 26 - 28 29	22 - 23 24 - 26 28	22 - 23 24 - 25 26 - 28 29
Nr. Pcs.	3	3	3	3	1	3	1

POS	COD.	DESCRIZIONE – DESCRIPTION - KIT	NR
20	98.2137.00	Tappo M18x1.5x10 270	3
21	99.3175.00	Vite M8x60 UNI 5931 270	8
22	44.1002.51 63.1010.51	Anello di testa D. 13 272-275 Anello di testa D. 15 273-276	3
23	90.2602.00 90.2611.00	An. ten. alt. D. 13.0x21.0x4.0 HP 272-275 An. ten. alt. D. 15.0x24.0x5.4/3.4 HP 273-276	3
24	90.5076.50 90.5089.90	Anello antiest. D. 13x21x3 272-275 Anello antiest. D. 15x24x2 273-276	3
25	58.6056.01 58.6057.01	Gr. supp. guarn./boccola D. 13 275 Gr. supp. guarn./boccola D. 15 276	3
26	90.3606.00	OR D. 26.7x1.78 NBR 70SH 2106 272-273-275-276	3
28	90.2601.00 90.2608.00	Anello ten. alt. D. 13x20x5 LP 272-275 Anello ten. alt. D. 15x22x5 LP 273-276	3
29	58.2106.70 58.2107.70	Anello per tenuta D. 13 275 Anello per tenuta D. 15 276	3
30	98.2100.00	Tappo G 3/8"x13 270	1
31	96.7380.00	Rosetta D. 17.5x23.0x1.5 270	1
32	98.2176.00	Tappo G 1/2"x10 270	1
33	96.7514.00	Rosetta D. 21.5x27.0x1.5 270	1
34	96.6990.00	Rosetta D. 7.5x23.0x0.5 270	3
35	58.2105.82	Guarnizione spugna D. 3.0x94.0 270	1
36	58.0100.22	Carter pompa 270	1
37	58.2104.51	Protezione 270	1
38	90.1565.50	Anello rad. D. 15.0x24.0x5.0/7.0 271	3
39	58.0500.66	Guida pistone 270	3
40	97.7340.00	Spinotto D. 10x29.5 270	3

POS	COD.	DESCRIZIONE – DESCRIPTION - KIT	NR
41	58.0300.22	Biella 270	3
42	90.0635.00	Anello d'arresto D. 25 270	1
43	99.1837.00	Vite M6x14 UNI 5931 270	8
44	53.2108.51	Vetrino spia livello olio 270	1
45	63.0202.65 63.0205.65 63.0208.65 63.0212.35 63.0291.35 63.0216.35 63.0218.35	Alb. ecc. C.5 - E2E2108 Alb. ecc. C.6.5 - E2D2010 E2E2808 E2E2111 Alb. ecc. C.8 - E2D2011 E2E2810 E2E2113 Alb. ecc. C.10 - E2B2008 E2D2810 E2E2116 E2C2109 E2D2013 E2E2812 Alb. ecc. C.11 - E2D2015 E2D2811 E2E2813 Alb. ecc. C.12 - E2C2111 E2D2016 E2D2812 Alb. ecc. C.13 - E2B2010 E2B2808 E2E2815 E2C2112 E2C2809 E2D2813	1
46	91.8331.00	Cuscinetto a sfere 270	2
47	90.3898.00	OR D. 56.82x2.62 NBR 70SH 3225 270	1
48	90.1641.00	Anello rad. D. 25.0x62.0x10.0 270	1
49	91.4892.00	Linguetta 8.0x7.0x35.0 270	1
50	98.2105.00	Asta livello olio G 3/8"x51 270	1
51	90.3925.50	OR D. 113.97x2.62 NBR 70SH 3450 270	1
52	58.1600.22	Coperchio posteriore 270	1
53	98.2042.50	Tappo G 1/4"x9 TE17 – Zinc. 270	1
54	90.3585.00	OR D. 10.82x1.78 NBR 70SH 2043 270	1
55	98.1966.00	Tappo G 1/8"x8 270	1
56	99.3037.00	Vite M8x16 UNI 5739 270	4
57	96.7016.00	Rosetta D. 8.4x14.4x2.0 270	4
58	50.2000.74	Piedino pompa 270	2
59	90.3859.00	OR D. 25.07x2.62 NBR 70SH 3100 270	1
60	90.0671.00	Anello d'arresto ZJ30 270	1
61	58.1501.22	Coperchio laterale 270	1



E2B1618 - E2B1711 - E2B1712 - E2B1713 E2B2014 - E2B2015 - E2C1713 - E2C1714 E2C2015 - E2C2016
--

PISTON - PISTONE D. 18	PISTON - PISTONE D. 20
E2B1711 - E2B1712 - E2B1713 E2B2014 - E2B2015 - E2C1713 E2C1714 - E2C2015 - E2C2016	E2B1618

OTTONE - BRASS	NICKEL
E2B1711 - E2B1712 - E2B1713 E2B2014 - E2B2015 - E2C1713 E2C1714 - E2C2015 - E2C2016 E2B1618	E2B2015

POS	COD.	DESCRIZIONE – DESCRIPTION - KIT	NR
1	58.1202.41 58.1206.41 58.1207.41	Testata pompa D. 18 Testata pompa D. 20 Testata pompa D. 18 - NK	1
2	36.2025.51	Guida valvola d'aspirazione 269	3
3	94.7376.00	Molla Dm. 9.4x14.8 269	3
4	36.2001.76	Valvola sferica 269	3
5	36.2003.66	Sede valvola d'aspirazione 269	3
6	90.3841.00	OR D. 17.13x2.62 NBR 70SH 3068 269	3
7	36.7115.01	Gr. valvola d'aspirazione 269	3
8	90.3847.00	OR D. 20.29x2.62 NBR 90SH 3081 270-292	3
9	98.2226.00 98.2225.00	Tappo M24x1.5x16.7 270 Tappo M24x1.5x16.7 - NK 292	3
10	99.1690.00	Vite M5x55 3	3
11	96.6905.00	Rosetta D. 5.0x11.5x0.4 3	3
12	58.0402.09 59.0400.09	Pistone D. 18x42 Pistone D. 20x42 3	3
13	90.3674.00	OR D. 12.00x2.00 NBR 70SH 269	3
14	36.2113.66	Sede valvola di mandata 269	3
15	36.2112.76	Valvola sferica 269	3
16	94.7333.00	Molla Dm. 6.2x10.4 269	3
17	36.2111.51	Guida valvola di mandata 269	3
18	36.7193.01	Gr. valvola mandata 269	3
19	90.3593.00	OR D. 15.60x1.78 NBR 70SH 2062 270-292	3

KIT RICAMBI - SPARE KITS

					PISTON - PISTONE D. 18		PISTON - PISTONE D. 20	
KIT NR.	KIT 269	KIT 270	KIT 292	KIT 271	KIT 274	KIT 277	KIT 329	KIT 330
Posizioni includi Positions included	2 - 3 - 4 5 - 6 - 13 14 - 15 - 16 17 - (7) - (18)	8 - 9 19 - 20	8 - 9 19 - 20	38	22 - 23 24 - 26 28	22 - 23 24 - 25 26 - 28 29	22 - 23 24 - 26 28	22 - 23 24 - 25 26 - 28 29
Nr. Pcs.	3	3	3	3	3	1	3	1

POS	COD.	DESCRIZIONE – DESCRIPTION - KIT	NR
20	98.2137.00 98.2137.50	Tappo M18x1.5x10 270 Tappo M18x1.5x10 - NK 292	3
21	99.3175.00	Vite M8x60 UNI 5931 8	8
22	63.1011.51 66.1007.51	Anello di testa D. 18 274-277 Anello di testa D. 20 329-330	3
23	90.2653.50 90.2691.00	An. ten. alt. D. 18.0x28.0x6.0/3.7 HP 274-277 An. ten. alt. D. 20.0x30.0x6.0/3.7 HP 329-330	3
24	90.5111.50 90.5134.00	Anello antiest. D. 18x28x2 274-277 Anello antiest. D. 20x30x2 329-330	3
25	58.6058.01 58.6059.01	Gr. supp. guarn./boccola D. 18 277 Gr. supp. guarn./boccola D. 20 330	3
26	90.3606.00 90.3608.00	OR D. 26.7x1.78 NBR 70SH 2106 274-277 OR D. 28.3x1.78 NBR 70SH. 2112 329-330	3
28	90.2650.00 90.2687.50	Anello ten. alt. D. 18x24x5 LP 274-277 Anello ten. alt. D. 20x26x5 LP 329-330	3
29	58.2108.70 58.2110.70	Anello per tenuta D. 18 277 Anello per tenuta D. 20 330	3
30	98.2100.00 98.2099.00	Tappo G 3/8"x13 Tappo G 3/8"x13 - NK 1	1
31	96.7380.00	Rosetta D. 17.5x23.0x1.5 1	1
32	98.2176.00 98.2179.00	Tappo G 1/2"x10 Tappo G 1/2"x10 - NK 1	1
33	96.7514.00	Rosetta D. 21.5x27.0x1.5 1	1
34	96.6990.00	Rosetta D. 7.5x23.0x0.5 3	3
35	58.2105.82	Guarnizione spugna D. 3.0x94.0 1	1
36	58.0100.22	Carter pompa 1	1
37	58.2104.51	Protezione 1	1
38	90.1565.50	Anello rad. D. 15.0x24.0x5.0/7.0 271	3

POS	COD.	DESCRIZIONE – DESCRIPTION - KIT	NR
39	58.0500.66	Guida pistone 3	3
40	97.7340.00	Spinotto D. 10x29.5 3	3
41	58.0300.22	Biella 3	3
42	90.0635.00	Anello d'arresto D. 25 1	1
43	99.1837.00	Vite M6x14 UNI 5931 8	8
44	53.2108.51	Vetrino spia livello olio 1	1
45	63.0212.35 63.0291.35 63.0216.35 63.0218.35 58.0201.65	Alb. ecc. C.10 - E2B1711 E2C1713 Alb. ecc. C.11 - E2B1712 E2C1714 Alb. ecc. C.12 - E2B1713 E2C2015 Alb. ecc. C.13 - E2B2014 E2C2016 Alb. ecc. C.14 - E2B1618 E2B2015	1
46	91.8331.00	Cuscinetto a sfere 2	2
47	90.3898.00	OR D. 56.82x2.62 NBR 70SH 3225 1	1
48	90.1641.00	Anello rad. D. 25.0x62.0x10.0 1	1
49	91.4892.00	Linguetta 8.0x7.0x35.0 1	1
50	98.2105.00	Asta livello olio G 3/8"x51 1	1
51	90.3925.50	OR D. 113.97x2.62 NBR 70SH 3450 1	1
52	58.1600.22	Coperchio posteriore 1	1
53	98.2042.50	Tappo G 1/4"x9 TE17 – Zinc. 1	1
54	90.3585.00	OR D. 10.82x1.78 NBR 70SH 2043 1	1
55	98.1966.00 98.1967.00	Tappo G 1/8"x8 Tappo G 1/8"x8 - NK 1	1
56	99.3037.00	Vite M8x16 UNI 5739 4	4
57	96.7016.00	Rosetta D. 8.4x14.4x2.0 4	4
58	50.2000.74	Piedino pompa 2	2
59	90.3859.00	OR D. 25.07x2.62 NBR 70SH 3100 1	1
60	90.0671.00	Anello d'arresto Z130 1	1
61	58.1501.22	Coperchio laterale carter 1	1



E2C2109 - E2C2111 - E2C1713 - E2C1714 - E2C2015
--

PISTON - PISTONE D. 15	PISTON - PISTONE D. 18
E2C2109 - E2C2111	E2C1713 - E2C1714 - E2C2015

POS	COD.	DESCRIZIONE – DESCRIPTION - KIT	NR
1	58.1201.41 58.1202.41	Testata pompa D. 15 Testata pompa D. 18	1
2	36.2025.51	Guida valvola d'aspirazione 269	3
3	94.7376.00	Molla Dm. 9.4x14.8 269	3
4	36.2001.76	Valvola sferica 269	3
5	36.2003.66	Sede valvola d'aspirazione 269	3
6	90.3841.00	OR D. 17.13x2.62 NBR 70SH 3068 269	3
7	36.7115.01	Gr. valvola d'aspirazione 269	3
8	90.3847.00	OR D. 20.29x2.62 NBR 90SH 3081 270	3
9	98.2226.00	Tappo M24x1.5x16.7 270	3
10	99.1690.00	Vite M5x55	3
11	96.6905.00	Rosetta D. 5.0x11.5x0.4	3
12	58.0401.09 58.0402.09	Pistone D. 15x42 Pistone D. 18x42	3
13	90.3674.00	OR D. 12.00x2.00 NBR 70SH 269	3
14	36.2113.66	Sede valvola di mandata 269	3
15	36.2112.76	Valvola sferica 269	3
16	94.7333.00	Molla Dm. 6.2x10.4 269	3
17	36.2111.51	Guida valvola di mandata 269	3
18	36.7193.01	Gr. valvola mandata 269	3
19	90.3593.00	OR D. 15.60x1.78 NBR 70SH 2062 270	3
20	98.2137.00	Tappo M18x1.5x10 270	3
21	99.3175.00	Vite M8x60 UNI 5931	8

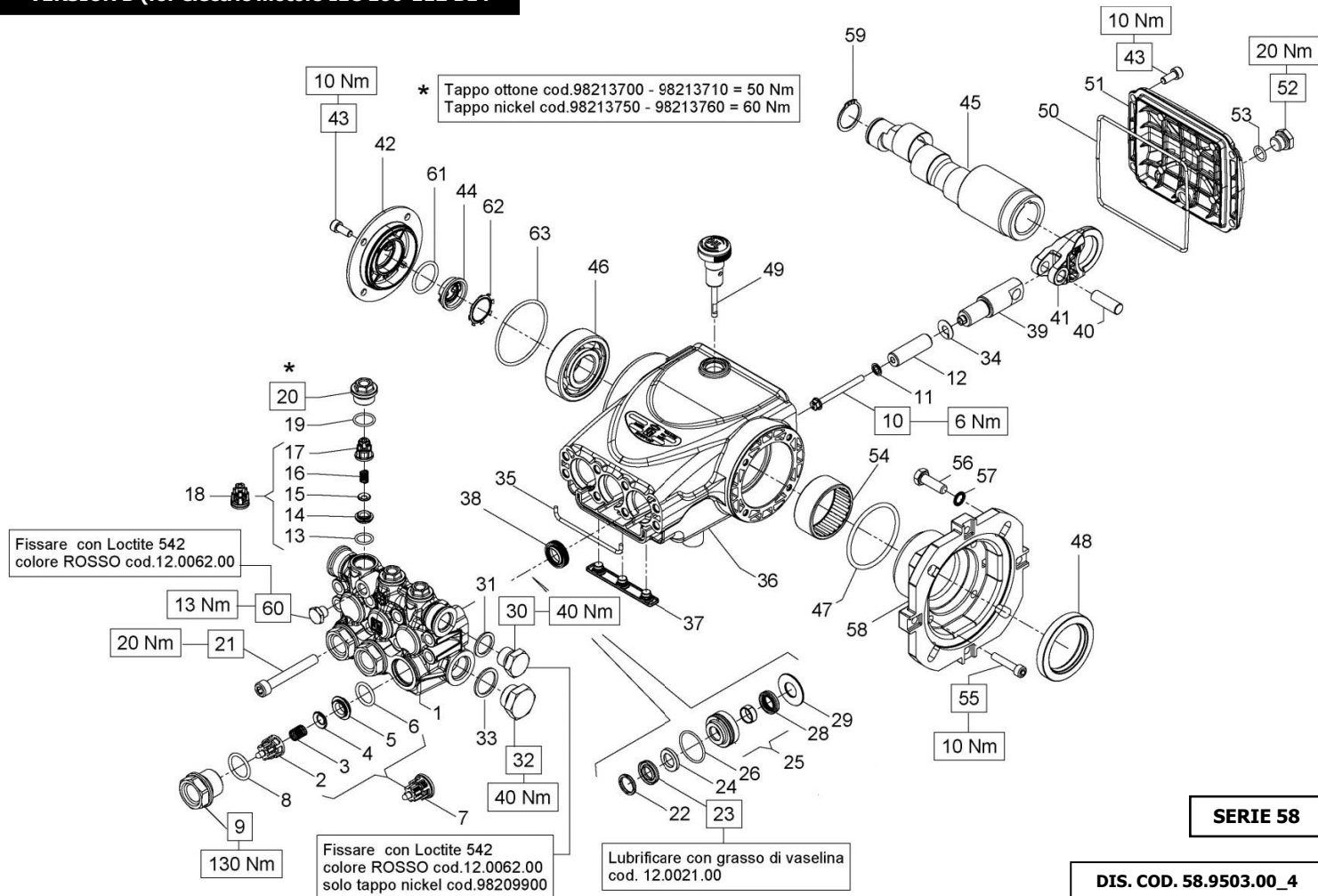
KIT RICAMBI - SPARE KITS

KIT NR.	KIT 269	KIT 270	KIT 271
Posizioni incluse Positions included	2 - 3 - 4 5 - 6 - 13 14 - 15 - 16 17 - (7) - (18)	8 - 9 19 - 20	38
Nr. Pcs.	3	3	3

POS	COD.	DESCRIZIONE – DESCRIPTION - KIT	NR
22	63.1010.51 63.1011.51	Anello di testa D. 15 273-276 Anello di testa D. 18 274-277	3
23	90.2611.00 90.2653.50	An. ten. alt. D. 15.0x24.0x5.4/3.4 HP 273-276 An. ten. alt. D. 18.0x28.0x6.0/3.7 HP 274-277	3
24	90.5089.90 90.5111.50	Anello antiest. D. 15x24x2 273-276 Anello antiest. D. 18x28x2 274-277	3
25	58.6057.01 58.6058.01	Gr. supp. guarn./boccola D. 15 276 Gr. supp. guarn./boccola D. 18 277	3
26	90.3606.00	OR D. 26.7x1.78 NBR 70SH 2106 273-274-276-277	3
28	90.2608.00 90.2650.00	Anello ten. alt. D. 15x22x5 LP 273-276 Anello ten. alt. D. 18x24x5 LP 274-277	3
29	58.2107.70 58.2108.70	Anello per tenuta D. 15 276 Anello per tenuta D. 18 277	3
30	98.2100.00	Tappo G 3/8"x13	1
31	96.7380.00	Rosetta D. 17.5x23.0x1.5	1
32	98.2176.00	Tappo G 1/2"x10	1
33	96.7514.00	Rosetta D. 21.5x27.0x1.5	1
34	96.6990.00	Rosetta D. 7.5x23.0x0.5	3
35	58.2105.82	Guarnizione spugna D. 3.0x94.0	1
36	58.0100.22	Carter pompa	1
37	58.2104.51	Protezione	1
38	90.1565.50	Anello rad. D. 15.0x24.0x5.0/7.0 271	3
39	58.0500.66	Guida pistone	3
40	97.7340.00	Spinotto D. 10x29.5	3
41	58.0300.22	Biella	3
42	58.1501.22	Coperchio laterale	1

PISTON - PISTONE D. 15		PISTON - PISTONE D. 18	
KIT 273	KIT 276	KIT 274	KIT 277
22 - 23 24 - 26 28	22 - 23 24 - 25 26 - 28 29	22 - 23 24 - 26 28	22 - 23 24 - 25 26 - 28 29
3	1	3	1

POS	COD.	DESCRIZIONE – DESCRIPTION - KIT	NR
43	99.1837.00	Vite M6x14 UNI 5931	8
44	53.2108.51	Vetrino spia livello olio	1
45	63.0232.65 63.0294.65 63.0236.65	Alb. ecc. C.10 - E2C1713 E2C2109 Alb. ecc. C.11 - E2C1714 Alb. ecc. C.12 - E2C2015 E2C2111	1
46	91.8331.00	Cuscinetto a sfere	1
47	90.4097.00	OR D. 55.56x3.53 NBR 70SH 159	1
48	90.1690.00	Anello rad. D. 45.0x62.0x8.0	1
49	99.1790.00		1
50	98.2105.00	Asta livello olio G 3/8"x51	1
51	90.3925.50	OR D. 113.97x2.62 NBR 70SH 3450	1
52	58.1600.22	Coperchio posteriore	1
53	98.2042.50	Tappo G 1/4"x9 TE17 – Zinc.	1
54	90.3585.00	OR D. 10.82x1.78 NBR 70SH 2043	1
55	91.8568.00	Boccola a rullini	1
56	99.1912.00	Vite M6x30 5931	4
57	99.4600.00	Vite 1/2"x1-1/4"	4
58	96.7195.00	Rosetta D. 13.0x18.0x1.1	4
59	10.0504.22	Flangia motore elettrico 145-184TC	1
60	90.0635.00	Anello d'arresto D. 25	1
61	98.1966.00	Tappo G 1/8"x8	1
62	90.3859.00	OR D. 25.07x2.62 NBR 70SH 3100	1
63	90.0671.00	Anello d'arresto Z130	1
64	90.3898.00	OR D. 56.82x2.62 NBR 70SH 3225	1



E2B2008 - E2B2808 - E2B2010 - E2D2010 E2D2810 - E2D2011 - E2D2811 - E2D2812 E2D2013 - E2D2813 - E2D2015 - E2D2016 E2B1711 - E2B1712 - E2B1713 - E2B2014
--

PISTON D. 13	PISTON D. 15	PISTON D. 18
E2B2808 - E2D2810 E2D2811 - E2D2812 E2D2813	E2B2008 - E2B2010 E2D2010 - E2D2011 E2D2013 - E2D2015 E2D2016	E2B1711 - E2B1712 E2B1713 - E2B2014

POS	COD.	DESCRIZIONE – DESCRIPTION - KIT	NR
1	58.1200.41 58.1201.41 58.1202.41	Testata pompa D. 13 Testata pompa D. 15 Testata pompa D. 18	1
2	36.2025.51	Guida valvola d'aspirazione	269 3
3	94.7376.00	Molla Dm. 9.4x14.8	269 3
4	36.2001.76	Valvola sferica	269 3
5	36.2003.66	Sede valvola d'aspirazione	269 3
6	90.3841.00	OR D. 17.13x2.62 NBR 70SH 3068	269 3
7	36.7115.01	Gr. valvola d'aspirazione	269 3
8	90.3847.00	OR D. 20.29x2.62 NBR 90SH 3081	270 3
9	98.2226.00	Tappo M24x1.5x16.7	270 3
10	99.1690.00	Vite M5x55	3
11	96.6905.00	Rosetta D. 5.0x11.5x0.4	3
12	58.0400.09 58.0401.09 58.0402.09	Pistone D. 13x42 Pistone D. 15x42 Pistone D. 18x42	3
13	90.3674.00	OR D. 12.00x2.00 NBR 70SH	269 3
14	36.2113.66	Sede valvola di mandata	269 3
15	36.2112.76	Valvola sferica	269 3
16	94.7333.00	Molla Dm. 6.2x10.4	269 3
17	36.2111.51	Guida valvola di mandata	269 3
18	36.7193.01	Gr. valvola mandata	269 3
19	90.3593.00	OR D. 15.60x1.78 NBR 70SH 2062	270 3
20	98.2137.00	Tappo M18x1.5x10	270 3
21	99.3175.00	Vite M8x60 UNI 5931	8

KIT RICAMBI - SPARE KITS				PISTON - PISTONE D. 13		PISTON - PISTONE D. 15		PISTON - PISTONE D. 18	
KIT NR.	KIT 269	KIT 270	KIT 271	KIT 272	KIT 275	KIT 273	KIT 276	KIT 274	KIT 277
Posizioni include Positions included	2 - 3 - 4 5 - 6 - 13 14 - 15 - 16 17 - (7) - (18)	8 - 9 19 - 20	38	22 - 23 24 - 26 28	22 - 23 24 - 25 26 - 28 29	22 - 23 24 - 26 28	22 - 23 24 - 25 26 - 28 29	22 - 23 24 - 26 28	22 - 23 24 - 25 26 - 28 29
Nr. Pcs.	3	3	3	3	1	3	1	3	1

POS	COD.	DESCRIZIONE – DESCRIPTION - KIT	NR
22	44.1002.51 63.1010.51 63.1011.51	Anello di testa D. 13 Anello di testa D. 15 Anello di testa D. 18	272-275 273-276 274-277
23	90.2602.00 90.2611.00 90.2653.50	An. ten. alt. D. 13.0x21.0x4.0 HP An. ten. alt. D. 15.0x24.0x5.4/3.4 HP An. ten. alt. D. 18.0x28.0x6.0/3.7 HP	272-275 273-276 274-277
24	90.5076.50 90.5089.90 90.5111.50	Anello antiest. D. 13x21x3 Anello antiest. D. 15x24x2 Anello antiest. D. 18x28x2	272-275 273-276 274-277
25	58.6056.01 58.6057.01 58.6058.01	Gr. supp. guarn./boccola D. 13 Gr. supp. guarn./boccola D. 15 Gr. supp. guarn./boccola D. 18	275 276 277
26	90.3606.00	OR D. 26.7x1.78 NBR 70SH 2106	272-273-274-275-276-277
28	90.2601.00 90.2608.00 90.2650.00	Anello ten. alt. D. 13x20x5 LP Anello ten. alt. D. 15x22x5 LP Anello ten. alt. D. 18x24x5 LP	272-275 273-276 274-277
29	58.2106.70 58.2107.70 58.2108.70	Anello per tenuta D. 13 Anello per tenuta D. 15 Anello per tenuta D. 18	275 276 277
30	98.2100.00	Tappo G 3/8"x13	1
31	96.7380.00	Rosetta D. 17.5x23.0x1.5	1
32	98.2176.00	Tappo G 1/2"x10	1
33	96.7514.00	Rosetta D. 21.5x27.0x1.5	1
34	96.6990.00	Rosetta D. 7.5x23.0x0.5	3
35	58.2105.82	Guarnizione spugna D. 3.0x94.0	1
36	58.0100.22	Carter pompa	1
37	58.2104.51	Protezione	1
38	90.1565.50	Anello rad. D. 15.0x24.0x5.0/7.0	271 3
39	58.0500.66	Guida pistone	3

POS	COD.	DESCRIZIONE – DESCRIPTION - KIT	NR
40	97.7340.00	Spinotto D. 10x29.5	3
41	58.0300.22	Biella	3
42	58.1501.22	Coperchio laterale	1
43	99.1837.00	Vite M6x14 UNI 5931	8
44	53.2108.51	Vetrino spia livello olio	1
45	63.0245.65 63.0248.65 63.0252.65 63.0293.65 63.0256.65 63.0295.65	Alb. ecc. C.6.5 - E2D2010 Alb. ecc. C.8 - E2D2011 Alb. ecc. C.10 - E2B2008 E2D2010 E2B1711 E2D2013 Alb. ecc. C.11 - E2D2015 E2D2811 E2B1712 Alb. ecc. C.12 - E2B1713 E2D2016 E2D2812 Alb. ecc. C.13 - E2B2010 E2B2808 E2B2014 E2D2813	1
46	91.8331.00	Cuscinetto a sfere	1
47	90.4097.00	OR D. 55.56x3.53 NBR 70SH 159	1
48	90.1690.00	Anello rad. D. 45.0x62.0x8.0	1
49	98.2105.00	Asta livello olio G 3/8"x51	1
50	90.3925.50	OR D. 113.97x2.62 NBR 70SH 3450	1
51	58.1600.22	Coperchio posteriore	1
52	98.2042.50	Tappo G 1/4"x9 TE17 – Zinc.	1
53	90.3585.00	OR D. 10.82x1.78 NBR 70SH 2043	1
54	91.8568.00	Boccola a rullini	1
55	99.1912.00	Vite M6x30 5931	4
56	99.3067.00	Vite M8x25 5739	4
57	96.7014.00	Rosetta D. 8.4x13.0x0.7	4
58	10.0494.22	Flangia motore elettrico 100-112 B14	1
59	90.0635.00	Anello d'arresto D. 25	1
60	98.1966.00	Tappo G 1/8"x8	1
61	90.3859.00	OR D. 25.07x2.62 NBR 70SH 3100	1
62	90.0671.00	Anello d'arresto ZJ30	1
63	90.3898.00	OR D. 56.82x2.62 NBR 70SH 3225	1



DIS. COD. 58.9501.00_4

E2E2108 - E2E2111 - E2E2113	
------------------------------------	--

KIT RICAMBI - SPARE KITS

KIT NR.	KIT 269	KIT 270	KIT 271	KIT 273	KIT 276
Posizioni incluse Positions included	2 - 3 - 4 5 - 6 - 13 14 - 15 - 16 17 - (7) - (18)	8 - 9 19 - 20	38	22 - 23 24 - 26 28	22 - 23 24 - 25 26 - 28 29
Nr. Pcs.	3	3	3	3	1

POS	COD.	DESCRIZIONE – DESCRIPTION - KIT	NR
1	58.1201.41	Testata pompa D. 15	1
2	36.2025.51	Guida valvola d'aspirazione 269	3
3	94.7376.00	Molla Dm. 9.4x14.8 269	3
4	36.2001.76	Valvola sferica 269	3
5	36.2003.66	Sede valvola d'aspirazione 269	3
6	90.3841.00	OR D. 17.13x2.62 NBR 70SH 3068 269	3
7	36.7115.01	Gr. valvola d'aspirazione 269	3
8	90.3847.00	OR D. 20.29x2.62 NBR 90SH 3081 270	3
9	98.2226.00	Tappo M24x1.5x16.7 270	3
10	99.1690.00	Vite M5x55	3
11	96.6905.00	Rosetta D. 5.0x11.5x0.4	3
12	58.0401.09	Pistone D. 15x42	3
13	90.3674.00	OR D. 12.00x2.00 NBR 70SH 269	3
14	36.2113.66	Sede valvola di mandata 269	3
15	36.2112.76	Valvola sferica 269	3
16	94.7333.00	Molla Dm. 6.2x10.4 269	3
17	36.2111.51	Guida valvola di mandata 269	3
18	36.7193.01	Gr. valvola mandata 269	3
19	90.3593.00	OR D. 15.60x1.78 NBR 70SH 2062 270	3
20	98.2137.00	Tappo M18x1.5x10 270	3
21	99.3175.00	Vite M8x60 UNI 5931	8
22	63.1010.51	Anello di testa D. 15 273-276	3
23	90.2611.00	An. ten. alt. D. 15.0x24.0x5.4/3.4 HP 273-276	3
24	90.5089.90	Anello antiest. D. 15x24x2 273-276	3
25	58.6057.01	Gr. supp. guarn./boccola D. 15 276	3
26	90.3606.00	OR D. 26.7x1.78 NBR 70SH 2106 273-276	3

POS	COD.	DESCRIZIONE – DESCRIPTION - KIT	NR
28	90.2608.00	Anello ten. alt. D. 15x22x5 LP 273-276	3
29	58.2107.70	Anello per tenuta D. 15 276	3
30	98.2100.00	Tappo G 3/8"x13	1
31	96.7380.00	Rosetta D. 17.5x23.0x1.5	1
32	98.2176.00	Tappo G 1/2"x10	1
33	96.7514.00	Rosetta D. 21.5x27.0x1.5	1
34	96.6990.00	Rosetta D. 7.5x23.0x0.5	3
35	58.2105.82	Guarnizione spugna D. 3.0x94.0	1
36	58.0100.22	Carter pompa	1
37	58.2104.51	Protezione	1
38	90.1565.50	Anello rad. D. 15.0x24.0x5.0/7.0 271	3
39	58.0500.66	Guida pistone	3
40	97.7340.00	Spinotto D. 10x29.5	3
41	58.0300.22	Biella	3
42	58.1501.22	Coperchio laterale	1
43	99.1837.00	Vite M6x14 UNI 5931	8
44	53.2108.51	Vetrino spia livello olio	1
45	63.0265.65 63.0264.65 63.0266.65	Alb. ecc. C.5 - E2E2108 Alb. ecc. C.6.5 - E2E2111 Alb. ecc. C.8 - E2E2113	1
46	91.8331.00	Cuscinetto a sfere	1
47	90.4097.00	OR D. 55.56x3.53 NBR 70SH 159	1
48	90.1687.00	Anello rad. D. 45.0x60.0x8.0	1
49	99.1790.00	Vite M6x06 5929	1
50	98.2105.00	Asta livello olio G 3/8"x51	1
51	90.3925.50	OR D. 113.97x2.62 NBR 70SH 3450	1
52	58.1600.22	Coperchio posteriore	1
53	98.2042.50	Tappo G 1/4"x9 TE17 – Zinc.	1
54	90.3585.00	OR D. 10.82x1.78 NBR 70SH 2043	1

POS	COD.	DESCRIZIONE – DESCRIPTION - KIT	NR
55	91.8568.00	Boccola a rullini	1
56	99.1912.00	Vite M6x30 5931	4
57	99.2730.00	Vite 5/16"x3/4"	4
58	96.7014.00	Rosetta D. 8.4x13.0x0.7	4
59	10.0617.22	Flangia motore a scoppio SAE J609	1
60	90.0635.00	Anello d'arresto D. 25	1
61	98.1966.00	Tappo G 1/8"x8	1
62	90.3859.00	OR D. 25.07x2.62 NBR 70SH 3100	1
63	90.0671.00	Anello d'arresto Z130	1
64	90.3898.00	OR D. 56.82x2.62 NBR 70SH 3225	1



DIS. COD. 58.9504.00_4

E2E2108 - E2E2808 - E2E2810 - E2E2111 E2E2811 - E2E2812 - E2E2113 - E2E2813 E2E2114 - E2E2815 - E2E2116
--

PISTON - PISTONE D. 13	PISTON - PISTONE D. 15
E2E2808 E2E2810 E2E2811 E2E2812 E2E2813 E2E2815	E2E2111 E2E2113 E2E2114 E2E2116 E2E2108

OTTONE - BRASS	NICKEL
E2E2808 E2E2810 E2E2811 E2E2812 E2E2813 E2E2111 E2E2113 E2E2114 E2E2116 E2E2108 E2E2815	E2E2815

POS	COD.	DESCRIZIONE – DESCRIPTION - KIT	NR
1	58.1200.41 58.1201.41 58.1212.41	Testata pompa D. 13 Testata pompa D. 15 Testata pompa D. 13 - NK	1
2	36.2025.51	Guida valvola d'aspirazione 269	3
3	94.7376.00	Molla Dm. 9.4x14.8 269	3
4	36.2001.76	Valvola sferica 269	3
5	36.2003.66	Sede valvola d'aspirazione 269	3
6	90.3841.00	OR D. 17.13x2.62 NBR 70SH 3068 269	3
7	36.7115.01	Gr. valvola d'aspirazione 269	3
8	90.3847.00	OR D. 20.29x2.62 NBR 90SH 3081 270-292	3
9	98.2226.00 98.2225.00	Tappo M24x1.5x16.7 270 Tappo M24x1.5x16.7 - NK 292	3
10	99.1690.00	Vite M5x55	3
11	96.6905.00	Rosetta D. 5.0x11.5x0.4	3
12	58.0400.09 58.0401.09	Pistone D. 13x42 Pistone D. 15x42	3
13	90.3674.00	OR D. 12.00x2.00 NBR 70SH 269	3
14	36.2113.66	Sede valvola di mandata 269	3
15	36.2112.76	Valvola sferica 269	3
16	94.7333.00	Molla Dm. 6.2x10.4 269	3
17	36.2111.51	Guida valvola di mandata 269	3
18	36.7193.01	Gr. valvola mandata 269	3
19	90.3593.00	OR D. 15.60x1.78 NBR 70SH 2062 270-292	3

KIT RICAMBI - SPARE KITS

					PISTON - PISTONE D. 13		PISTON - PISTONE D. 15	
KIT NR.	KIT 269	KIT 270	KIT 292	KIT 271	KIT 272	KIT 275	KIT 273	KIT 276
Posizioni includi Positions included	2 - 3 - 4 5 - 6 - 13 14 - 15 - 16 17 - (7) - (18)	8 - 9 19 - 20	8 - 9 19 - 20	38	22 - 23 24 - 26 28	22 - 23 24 - 25 26 - 28 29	22 - 23 24 - 26 28	22 - 23 24 - 25 26 - 28 29
Nr. Pcs.	3 + 3	3 + 3	3 + 3	3	3	1	3	1

POS	COD.	DESCRIZIONE – DESCRIPTION - KIT	NR
20	98.2137.00 98.2137.50	Tappo M18x1.5x10 270 Tappo M18x1.5x10 - NK 292	3
21	99.3175.00	Vite M8x60 UNI 5931	8
22	44.1002.51 63.1010.51	Anello di testa D. 13 272-275 Anello di testa D. 15 273-276	3
23	90.2602.00 90.2611.00	An. ten. alt. D. 13.0x21.0x4.0 HP 272-275 An. ten. alt. D. 15.0x24.0x5.4/3.4 HP 273-276	3
24	90.5076.50 90.5089.90	Anello antiest. D. 13x21x3 272-275 Anello antiest. D. 15x24x2 273-276	3
25	58.6056.01 58.6057.01	Gr. supp. guarn./boccola D. 13 275 Gr. supp. guarn./boccola D. 15 276	3
26	90.3606.00	OR D. 26.7x1.78 NBR 70SH 2106 272-273-275-276	3
28	90.2601.00 90.2608.00	Anello ten. alt. D. 13x20x5 LP 272-275 Anello ten. alt. D. 15x22x5 LP 273-276	3
29	58.2106.70 58.2107.70	Anello per tenuta D. 13 275 Anello per tenuta D. 15 276	3
30	98.2100.00 98.2099.00	Tappo G 3/8"x13 Tappo G 3/8"x13 - NK	1
31	96.7380.00	Rosetta D. 17.5x23.0x1.5	1
32	98.2176.00 98.2179.00	Tappo G 1/2"x10 Tappo G 1/2"x10 - NK	1
33	96.7514.00	Rosetta D. 21.5x27.0x1.5	1
34	96.6990.00	Rosetta D. 7.5x23.0x0.5	3
35	58.2105.82	Guarnizione spugna D. 3.0x94.0	1
36	58.0100.22	Carter pompa	1
37	58.2104.51	Protezione	1
38	90.1565.50	Anello rad. D. 15.0x24.0x5.0/7.0 271	3
39	58.0500.66	Guida pistone	3
40	97.7340.00	Spinotto D. 10x29.5	3
41	58.0300.22	Biella	3

POS	COD.	DESCRIZIONE – DESCRIPTION - KIT	NR
42	58.1501.22	Coperchio laterale	1
43	99.1837.00	Vite M6x14 UNI 5931	8
44	53.2108.51	Vetrino spia livello olio	1
45	63.0274.65 63.0277.65 63.0280.65 63.0282.65 63.0284.65 63.0292.65 63.0290.65	Alb. ecc. C.5 - E2E2108 Alb. ecc. C.6.5 - E2E2808 E2E2111 Alb. ecc. C.8 - E2E2810 E2E2113 Alb. ecc. C.9 - E2E2811 E2E2114 Alb. ecc. C.10 - E2E2812 E2E2116 Alb. ecc. C.11 - E2E2813 Alb. ecc. C.13 - E1E2815	1
46	91.8331.00	Cuscinetto a sfere	1
47	90.4097.00	OR D. 55.56x3.53 NBR 70SH 159	1
48	90.1690.00	Anello rad. D. 45.0x62.0x8.0	1
49	99.1790.00	Vite M6x6 5929	1
50	98.2105.00	Asta livello olio G 3/8"x51	1
51	90.3925.50	OR D. 113.97x2.62 NBR 70SH 3450	1
52	58.1600.22	Coperchio posteriore	1
53	98.2042.50	Tappo G 1/4"x9 TE17 – Zinc.	1
54	90.3585.00	OR D. 10.82x1.78 NBR 70SH 2043	1
55	91.8568.00	Boccola a rullini	1
56	99.1912.00	Vite M6x30 5931	4
57	99.2755.00 99.3346.00	Vite 5/16"x1" Vite 3/8"x1-1/4"	4
58	96.7020.00 96.7104.00	Rosetta 8.4x15.0x1.5 Rosetta 10.5x16.0x1.0	4
59	10.0518.22	Flangia motore a scoppio J609-B	1
60	90.0635.00	Anello d'arresto D. 25	1
61	98.1966.00 98.1667.00	Tappo G 1/8"x8 Tappo G 1/8"x8 - NK	1
62	90.3859.00	OR D. 25.07x2.62 NBR 70SH 3100	1
63	90.0671.00	Anello d'arresto ZJ30	1
64	90.3898.00	OR D. 56.82x2.62 NBR 70SH 3225	1

10 Nm

*

10 Nm

43



OPTIONAL

45 Nm

E2C2016

KIT RICAMBI - SPARE KITS

KIT NR.	KIT 269	KIT 270	KIT 292	KIT 271	KIT 274	KIT 277
Posizioni incluse Positions included	2 - 3 - 4 5 - 6 - 13 14 - 15 - 16 17 - (7) - (18)	8 - 9 19 - 20	8 - 9 19 - 20	38	22 - 23 24 - 26 28	22 - 23 24 - 25 26 - 28 29
Nr. Pcs.	3	3	3	3	3	1

POS	COD.	DESCRIZIONE – DESCRIPTION - KIT	NR
1	58.1202.41 58.1207.41	Testata pompa D. 18 Testata pompa D. 18 - NK	1
2	36.2025.51	Guida valvola d'aspirazione 269	3
3	94.7376.00	Molla Dm. 9.4x14.8 269	3
4	36.2001.76	Valvola sferica 269	3
5	36.2003.66	Sede valvola d'aspirazione 269	3
6	90.3841.00	OR D. 17.13x2.62 NBR 70SH 3068 269	3
7	36.7115.01	Gr. valvola d'aspirazione 269	3
8	90.3847.00	OR D. 20.29x2.62 NBR 90SH 3081 270 292	3
9	98.2226.00 98.2225.00	Tappo M24x1.5x16.7 270 Tappo M24x1.5x16.7 - NK 292	3
10	99.1690.00	Vite M5x55	3
11	96.6905.00	Rosetta D. 5.0x11.5x0.4	3
12	58.0402.09	Pistone D. 18x42	3
13	90.3674.00	OR D. 12.00x2.00 NBR 70SH 269	3
14	36.2113.66	Sede valvola di mandata 269	3
15	36.2112.76	Valvola sferica 269	3
16	94.7333.00	Molla Dm. 6.2x10.4 269	3
17	36.2111.51	Guida valvola di mandata 269	3
18	36.7193.01	Gr. valvola mandata 269	3
19	90.3593.00	OR D. 15.60x1.78 NBR 70SH 2062 270 292	3
20	98.2137.00 98.2137.50	Tappo M18x1.5x10 270 Tappo M18x1.5x10 - NK 292	3
21	99.3175.00	Vite M8x60 UNI 5931	8
22	63.1011.51	Anello di testa D. 18 274 277	3
23	90.2653.50	An. ten. alt. D. 18.0x28.0x6.0/3.7 HP 274 277	3
24	90.5111.50	Anello antiest. D. 18.0x28.0x2.0 274 277	3

POS	COD.	DESCRIZIONE – DESCRIPTION - KIT	NR
25	58.6058.01	Gr. supp. guarn./boccola D. 18 277	3
26	90.3606.00	OR D. 26.7x1.78 NBR 70SH 2106 274 277	3
28	90.2650.00	Anello ten. alt. D. 18.0x24.0x5.0 LP 274 277	3
29	58.2108.70	Anello per tenuta D. 18 277	3
30	98.2100.00 98.2099.00	Tappo G 3/8"x13 Tappo G 3/8"x13 - NK	1
31	96.7380.00	Rosetta D. 17.5x23.0x1.5	1
32	98.2176.00 98.2179.00	Tappo G 1/2"x10 Tappo G 1/2"x10 - NK	1
33	96.7514.00	Rosetta D. 21.5x27.0x1.5	1
34	96.6990.00	Rosetta D. 7.5x23.0x0.5	3
35	58.2105.82	Guarnizione spugna D. 3.0x94.0	1
36	58.0100.22	Carter pompa	1
37	58.2104.51	Protezione	1
38	90.1565.50	Anello rad. D. 15.0x24.0x5.0/7.0 271	3
39	58.0500.66	Guida pistone	3
40	97.7340.00	Spinotto D. 10x29.5	3
41	58.0300.22	Biella	3
42	58.1501.22	Coperchio laterale	1
43	99.1837.00	Vite M6x14 UNI 5931	8
44	53.2108.51	Vetrino spia livello olio	1
45	63.0237.65	Alb. ecc. C.12.5	1
46	91.8331.00	Cuscinetto a sfere	1
47	90.1651.00	Anello rad. D. 30.0x62.0x10.0	1
48	99.1790.00	Vite M6x6 5929	1
49	98.2105.00	Asta livello olio G 3/8"x51	1
50	90.3925.50	OR D. 113.97x2.62 NBR 70SH 3450	1
51	58.1600.22	Coperchio posteriore	1
52	98.2042.50	Tappo G 1/4"x9 TE17 – Zinc.	1

POS	COD.	DESCRIZIONE – DESCRIPTION - KIT	NR
53	90.3585.00	OR D. 10.82x1.78 NBR 70SH 2043	1
54	91.8371.00	Cuscinetto a sfere	1
55	99.1867.00	Vite M6x18 UNI 5931	4
56	96.6938.00	Rosetta D. 6.4x10.0x0.7	4
57	99.3686.00	Vite M10x30 UNI 5931	4
58	96.7103.00	Rosetta D. 10.5x18.0x2.0	4
59	10.0763.22	Flangia motore idraulico SAE-A	1
60	90.3859.00	OR D. 25.07x2.62 NBR 70SH 3100	1
61	90.0671.00	Anello d'arresto ZJ30	1
62	90.3898.00	OR D. 56.82x2.62 NBR 70SH 3225	1
63	91.4685.00	Linguetta 4.0/4.8x18.0	1
64	98.1966.00	Tappo G 1/8"x8	1
65	95.1060.00	Motore ingr. 014R / S-A CIL / G	1

VH VERSION

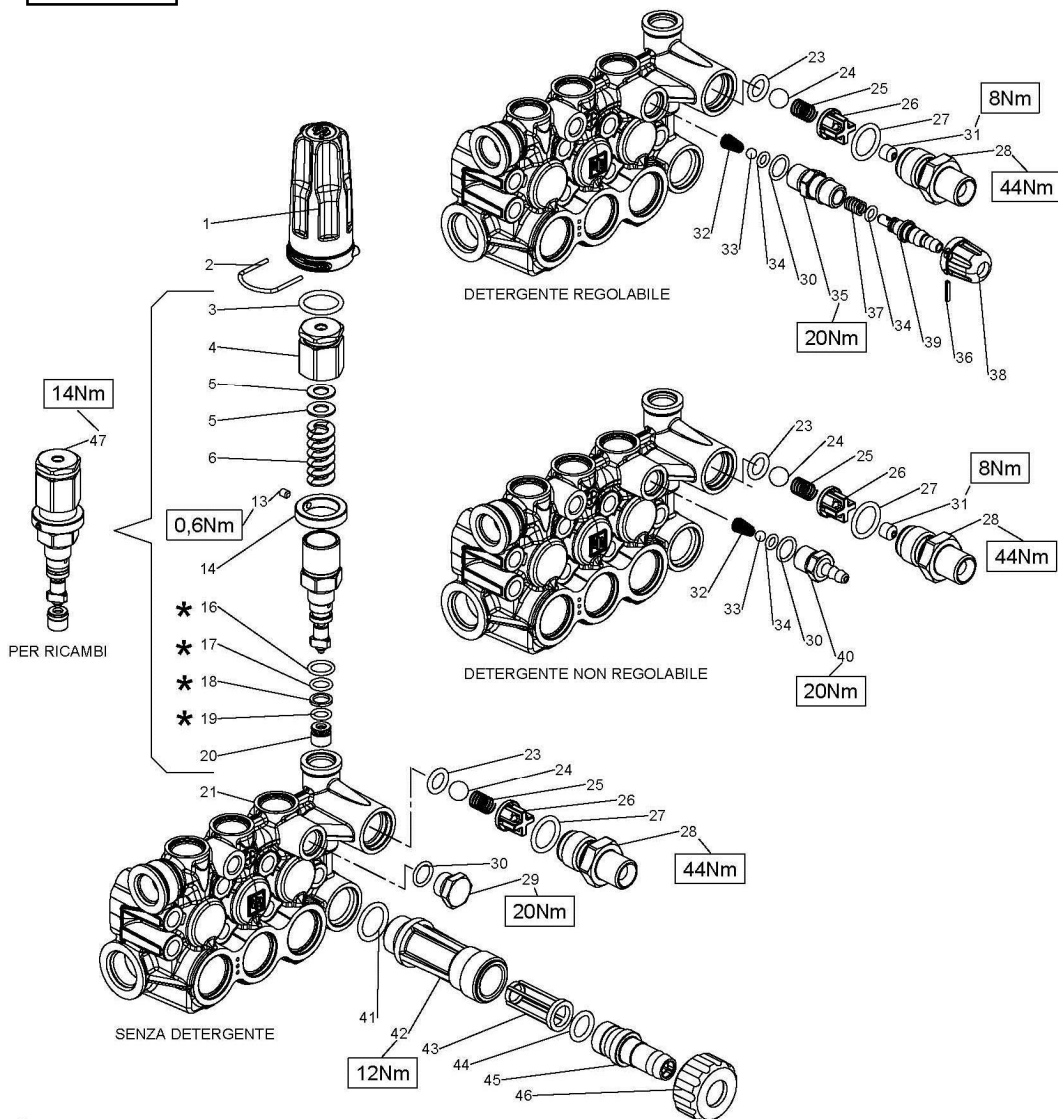
VERSIONE CON VALVOLA DI REGOLAZIONE AUT. – VERSION WITH BUILT-IN AUT. UNLOADER

VERSION AVEC RÉGULATEUR AUT. DE PRESSION INCORPORÉ
AUSFÜHRUNG MIT EINGEBAUTEM AUT. DRUCKREGULIERVENTIL

VERSIÓN CON REGULADOR AUT. DE PRESIÓN INCORPORADO - VERSÃO COM VÁLVULA DO REGULAMENTO AUT.

SERIE 58

OPTIONALS



DIS. COD. 36.9547.00_3

VH VERSION

VERSIONE CON VALVOLA DI REGOLAZIONE AUT. – VERSION WITH BUILT-IN AUT. UNLOADER

VERSION AVEC RÉGULATEUR AUT. DE PRESSION INCORPORÉ

AUSFÜHRUNG MIT EINGEBAUTEM AUT. DRUCKREGULIERVENTIL

VERSIÓN CON REGULADOR AUT. DE PRESIÓN INCORPORADO - VERSÃO COM VÁLVULA DO REGULAMENTO AUT

POS	COD.	DESCRIZIONE – DESCRIPTION - KIT	NR
1	36.3506.51	Pomolo di regolazione	1
2	10.0846.66	Forcella per pomolo di regolazione	1
3	90.3845.00	OR D. 18.72x2.62 NBR 70SH 3075	1
4	36.3481.70	Registro di pressione	1
5	36.3486.51	Rondella di scorrimento	2
6	94.7395.00	Molla Dm. 11.3x34.5	1
13	99.1267.00	Vite M4x5 UNI 5929	1
14	36.3477.70	Ghiera di pressione massima	1
16	90.3587.00	OR D. 11.11x1.78 NBR 70SH 114	1
17	90.3581.00	OR D. 8.73x1.78 NBR 70SH 108	1
18	90.5038.00	Anello antiest. D. 9.0x12.0x1.5	1
19	90.3578.00	OR D. 7.66x1.78 NBR 70SH 2031	1
20	36.3483.66	Sede	1
21	58.1203.41 58.1204.41 58.1205.41 58.1209.41 58.1210.41 58.1211.41 58.1213.41	Testata con valv. integ. DX D. 13 Testata con valv. integ. DX D. 15 Testata con valv. integ. DX D. 18 Testata con valv. integ. SX D. 13 Testata con valv. integ. SX D. 15 Testata con valv. integ. SX D. 18 Testata con valv. integ. DX D. 15 – NK	1
23	90.3823.00	OR D. 9.92x2.62 NBR 70SH 112	278 1
24	97.4838.00	Sfera D. 13/32"	278 1
25	94.7355.00	Molla Dm. 8.5x12.0	278 1
26	36.3104.51	Guida valvola	278 1
27	90.3839.00	OR D. 15.88x2.62 NBR 70SH 121	278 1
28	36.3490.70 36.3489.70 36.3488.70 36.3487.70 36.3479.70	Nipplo 3/8" NPT – F – D. 3 Nipplo G 3/8" – F – D. 3 Nipplo M22x1.5 – D. 3 Nipplo 3/8" NPT – M – D. 3 Nipplo G 3/8" – M – D. 3	1
29	98.2041.00 98.2042.00	Tappo G 1/4"x9 Tappo G 1/4"x9 - NK	1
30	90.3585.00	OR D. 10.82x1.78 NBR 70SH 2043	279-280 1
31	10.0795.66 10.0798.66	Ugello per iniettore D. 2.0 Ugello per iniettore D. 2.2	1
32	94.8217.00	Molla Dm. 4.3/7.3x11.0	279-280 1
33	97.4782.00	Sfera D. 7/32"	279-280 1

POS	COD.	DESCRIZIONE – DESCRIPTION - KIT	NR
34	90.3573.00	OR D. 5.28x1.78 NBR 70SH 2021	279-280 2
35	36.3482.70	Sede valvola detergente	279 1
36	97.6615.00	Spina elastica D. 2.0x12.0	279 1
37	94.7334.00	Molla Dm. 6.4x12.5	279 1
38	36.3484.51	Pomolo detergente rosso	279 1
39	36.3342.70	Otturatore con portagomma	279 1
40	36.3492.70	Portagomma	280 1
47	36.6054.01	Frutto valvola con sede	278 1
OPTIONALS			
41	90.3841.00	OR D. 17.13x2.62 NBR 70SH 3068	1
42	36.3182.51	Nipplo aspirazione G 3/4"	1
43	92.8925.00	Filtro D. 12.0x35.0	1
44	90.3828.00	OR D. 12.37x2.62 NBR 70SH 3050	1
45	36.2569.51	Portagomma aspirazione	1
46	92.9828.00	Ghiera G 3/4" – D. 15	1

KIT RICAMBI – SPARE KITS

KIT NR.	KIT 278	KIT 279	KIT 280
Posizioni include Positions included	23 - 24 25 - 26 27 - 47	30 - 32 33 - 34 35 - 36 37 - 38 39	30 - 32 33 - 34 40
Nr. Pcs.	-	-	-