

 ω

W97 - W112 - W124 - W130 - W140 - W150
W154 - W170 - W200 - W204 - W950
W951 - W952 - W953 - W954 - W955
W956 - W957 - W958 - W959 - W14200
W16180 - WW116 - WW136 - WW156
WW176 - WW186 - WW189 - WW206
WW209 - WW960 - WW961 - WW962

KIT RICAMBI – SPARE KITS				OTTONE BRASS	NICKEL	PISTONE- PISTON D. 15				PISTONE- PISTON D. 18				
KIT Nr.	KIT 23	KIT 123	KIT 124	KIT 158	KIT 88	KIT 89	KIT 90	KIT 125	KIT 130	KIT 126	KIT 127	KIT 128	KIT 129	KIT 131
Posizioni incluse Positions included	17	4 - 5 - 6 7 - 8 (11)	9 - 10	9 - 10	43 - 44 51	42	45	40 - 41	40 - 41 42 - 43 44 - 45 51	40 - 41	43 - 44 51	42	45	40 - 41 42 - 43 44 - 45 51
Nr. Pcs.	3	6	6	6	3	3	6	3	1	3	3	3	6	1

OTTONE BRASS	D.15	D.18
	W130 - W150 - W170 - W950 W951 - W952 - W953 WW116 - WW136 - WW156 WW176 - WW186 - WW189 WW206 - WW209 - WW960 WW961 - WW962	W97 - W112 - W124 W140 - W154 - W954 W955 - W956 - W957 W958 - W959
NICKEL	-	W200 - W204 W14200 - W16180

POS	COD.	DESCRIZIONE – DESCRIPTION - KIT	NR
1	44.1200.41 44.1204.41 44.1207.41	Testata pompa D. 15 Testata pompa D. 18 Testata pompa D. 18 – NICKEL	1
2	99.3175.00	Vite M8x60 UNI 5931	8
4	90.3841.00	OR D. 17.13x2.62 NBR 70SH 3068	123 6
5	36.2003.66	Sede valvola	123 6
6	36.2001.76	Valvola	123 6
7	94.7376.00	Molla Dm. 9.4x14.8	123 6
8	36.2025.51	Guida valvola	123 6
9	90.3847.00	OR D. 20.29x2.62 NBR 90SH 3081	124 158 6
10	98.2226.00 98.2225.00	Tappo M24x1.5x17 Tappo M24x1.5x17 – NICKEL	124 158 6
11	36.7115.01	Gr. valvola aspiraz. / mandata	123 6
12	99.1807.00	Vite M6x10 UNI 5739	8
13	50.1500.74	Coperchio carter	1
14	53.2108.51	Vetrino spia livello olio	1
15	90.3898.00	OR D. 56.82x2.62 NBR 70SH 3225	1
16	91.8331.00	Cuscinetto a sfere	2
17	90.1614.00	Anello rad. D. 20.0x30.0x5.0	23 3
18	44.0100.22	Carter pompa	1
19	98.2103.00	Tappo carico olio G 3/8"	1

POS	COD.	DESCRIZIONE – DESCRIPTION - KIT	NR
20	44.0200.35	Albero ecc. C. 9.5 - WW186 WW206 WW961	1
	44.0203.35	Albero ecc. C. 11.0 - W112 W140 W150 W950 W954 W955 W956 WW116 WW156 WW962 WW209 W200 W14200	
	44.0205.35	Albero ecc. C. 12.0 - WW189	
	44.0206.35	Albero ecc. C. 13.0 - W97 W124 W130 W154 W170 W951 W952 W953 W957 W958 W959 WW136 WW176 W204 W16180	
21	91.4892.00	Linguetta 8x7x35 UNI 6604	1
22	44.0500.66	Guida pistone	3
23	44.0300.22	Biella	3
24	90.3920.00	OR D.101.27x2.62 NBR 70SH 3400	1
25	44.1600.22	Coperchio posteriore	1
26	99.1837.00	Vite M6x14 UNI 5931	5
27	90.3585.00	OR D. 10.82x1.78 NBR 70SH 2043	1
28	98.2042.50	Tappo G 1/4"x9 TE17 – Zinc.	1
29	97.7340.00	Spinotto D. 10x29.5	3
30	96.7350.00	Rosetta D. 16.0x27.0x1.7/0.7	3
31	90.5022.00	Anello antiest. D. 6.2x9.0x1.5	3
32	90.3572.00	OR D. 5.28x1.78 NBR 2021	3
33	52.0400.09 44.0401.09	Pistone D. 15x37.5 Pistone D. 18x37.5	3
34	44.2115.70	Rosetta D. 8 con collare	3
35	92.2216.00	Dado M8x13x5	3
36	90.1641.00	Anello rad. D. 25.0x62.0x10.0	1
37	50.2000.74	Piede pompa	2
38	96.7016.00	Rosetta D. 8.4x14.4x2.0	4
39	99.3037.00	Vite M8x16 UNI 5739	4
40	90.3612.00	OR D. 31.47x1.78 NBR 70SH 2125	125 126 130 131 3

POS	COD.	DESCRIZIONE – DESCRIPTION - KIT	NR
41	44.0800.70 44.0801.70	Anello di fondo D. 15 Anello di fondo D. 18	125 130 126 131 3
42	52.2166.70 44.2161.70	Anello intermedio D. 15 Anello intermedio D. 18	89 130 128 131 3
43	90.2622.00	Anello RESTOP D. 15.0x25.0x5.0/3.1	88 130 127 131 3
	90.2683.00	Anello RESTOP D. 18.0x30.0x6.0/3.5	
44	90.2620.00	An. ten .alt. D. 15.0x25x5.0/3.0 HP	88 130 127 131 3
	90.2682.00	An. ten. alt. D. 18.0x30.0x6.0/3.5 HP	
45	51.1000.51 44.1001.51	Anello di testa D. 15 Anello di testa D. 18	90 130 129 131 3
46	98.2100.00	Tappo G 3/8"x13	1
47	98.2176.00	Tappo G 1/2"x10	1
48	96.7380.00	Rosetta D. 17.5x23.0x1.5	1
49	96.7514.00	Rosetta D. 21.5x27.0x1.5	1
50	98.1966.00	Tappo G 1/8"x8	1
51	90.2617.00	Anello ten .alt. D. 15.0x25.0x5.8 LP	88 130 127 131 3
	90.2684.00	Anello ten. alt. D. 18.0x30.0x6.8 LP	
52	90.3859.00	OR D. 25.07x2.62 NBR 70SH 3100	1
53	90.0671.00	Anello d'arresto ZJ30	1
54	53.1500.22	Coperchio laterale	1



W130HH - W140HH - W154HH

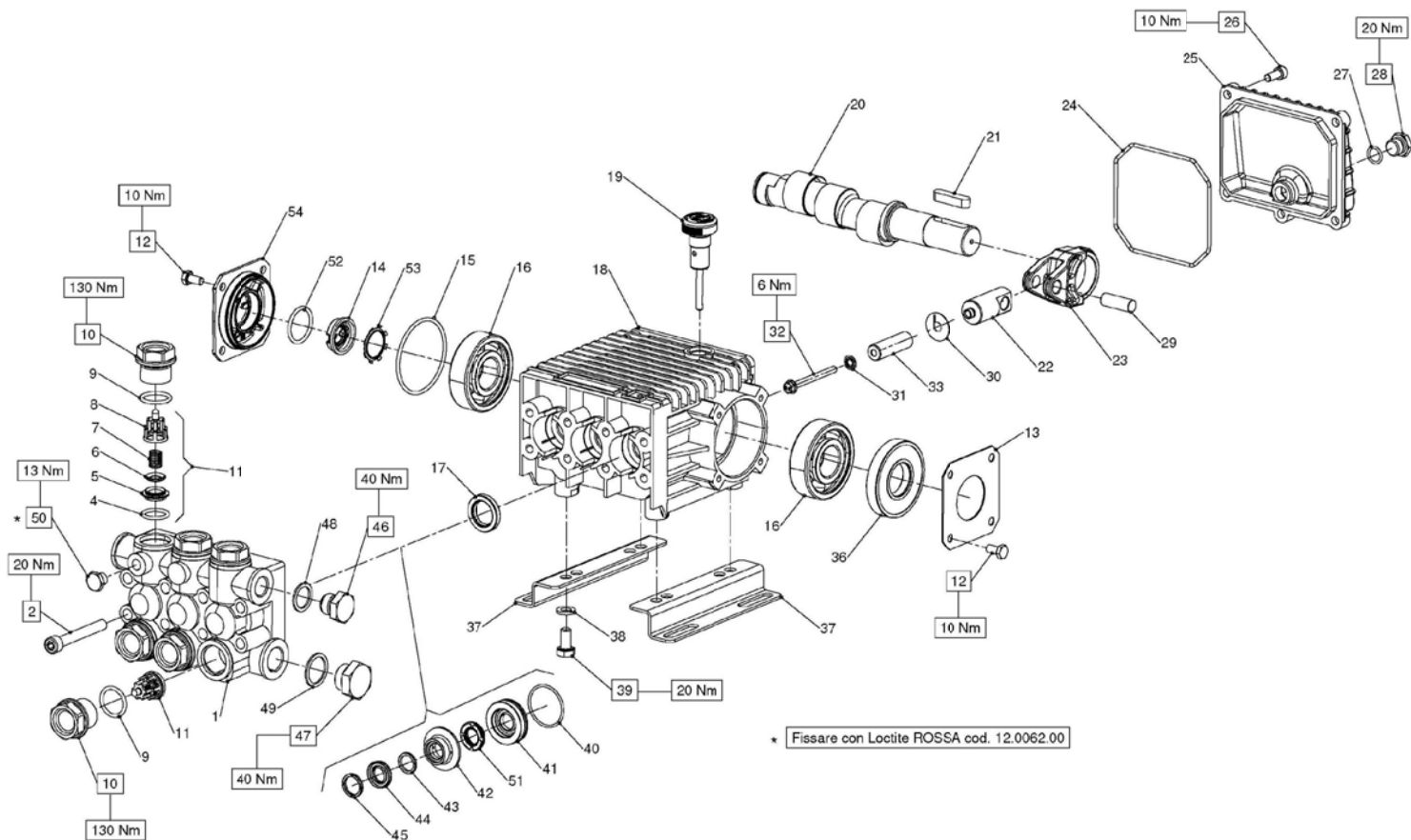
KIT RICAMBI – SPARE KITS				PISTONE - PISTON D. 15				PISTONE - PISTON D. 18			
KIT Nr.	KIT 0023	KIT 0123	KIT 0124	KIT 0250	KIT 0089	KIT 0090	KIT 0125	KIT 0126	KIT 0251	KIT 0128	KIT 0129
Posizioni include Positions included	17	4 - 5 6 - 7 - 8 (11)	9 - 10	43 - 44	42	45	40 - 41	40 - 41	43 - 44	42	45
Nr. Pcs.	3	6	6	3÷6	3	6	3	3	3÷6	3	6

D. 15	D. 18
W130HH	W140HH - W154HH

POS	COD.	DESCRIZIONE – DESCRIPTION - KIT	NR
1	44.1200.41 44.1204.41	Testata pompa D. 15 Testata pompa D. 18	1
2	99.3175.00	Vite M8x60 UNI 5931	8
4	90.3841.00	OR D. 17.13x2.62 NBR 70SH 3068	123 6
5	36.2003.66	Sede valvola	123 6
6	36.2001.76	Valvola	123 6
7	94.7376.00	Molla Dm. 9.4x14.8	123 6
8	36.2025.51	Guida valvola	123 6
9	90.3847.00	OR D. 20.29x2.62 NBR 90SH 3081	124 6
10	98.2226.00	Tappo M24x1.5x17	124 6
11	36.7115.01	Gr. valvola aspiraz. / mandata	123 6
12	99.1807.00	Vite M6x10 UNI 5739	8
13	50.1500.74	Coperchio carter	1
14	53.2108.51	Vetrino spia livello olio	1
15	90.3898.00	OR D. 56.82x2.62 NBR 70SH 3225	1
16	91.8331.00	Cuscinetto a sfere	2
17	90.1614.00	Anello rad. D. 20.0x30.0x5.0	23 3
18	44.0100.22	Carter pompa	1
19	98.2103.00	Tappo carico olio G 3/8"	1
20	44.0203.35 44.0206.35	Albero ecc. C. 11.0 - W140HH Albero ecc. C. 13.0 - W130HH W154HH	1
21	91.4892.00	Linguetta 8x7x35 UNI 6604	1
22	44.0500.66	Guida pistone	3
23	44.0300.22	Biella	3
24	90.3920.00	OR D.101.27x2.62 NBR 70SH 3400	1

POS	COD.	DESCRIZIONE – DESCRIPTION - KIT	NR
25	44.1600.22	Coperchio posteriore	1
26	99.1837.00	Vite M6x14 UNI 5931	5
27	90.3585.00	OR D. 10.82x1.78 NBR 70SH 2043	1
28	98.2042.50	Tappo G 1/4"x9 TE17 – Zinc.	1
29	97.7340.00	Spinotto D. 10x29.5	3
30	96.7350.00	Rosetta D. 16.0x27.0x1.7/0.7	3
31	90.5022.00	Anello antiest. D. 6.2x9.0x1.5	3
32	90.3572.00	OR D. 5.28x1.78 NBR 2021	3
33	52.0400.09 44.0401.09	Pistone D. 15x37.5 Pistone D. 18x37.5	3
34	44.2115.70	Rosetta D. 8 con collare	3
35	92.2216.00	Dado M8x13x5	3
36	90.1641.00	Anello rad. D. 25.0x62.0x10.0	1
37	50.2000.74	Piede pompa	2
38	96.7016.00	Rosetta D. 8.4 UNI 1751	4
39	99.3037.00	Vite M8x16 UNI 5739	4
40	90.3612.00	OR D. 31.47x1.78 NBR 70SH 2125	125 126 3
41	44.0800.70 44.0801.70	Anello di fondo D. 15 Anello di fondo D. 18	125 126 3
42	52.2166.70 44.2161.70	Anello intermedio D. 15 Anello intermedio D. 18	89 128 3
43	90.2622.00 90.2683.00	Anello RESTOP D. 15.0x25.0x5.0/3.1 Anello RESTOP D. 18.0x30.0x6.0/3.5	250 251 3
44	90.2620.00 90.2682.00	An. ten .alt. D. 15.0x25x5.0/3.0 HP An. ten. alt. D. 18.0x30.0x6.0/3.5 HP	250 251 6
45	51.1000.51 44.1001.51	Anello di testa D. 15 Anello di testa D. 18	90 129 6
46	98.2100.00	Tappo G 3/8"x13	1

POS	COD.	DESCRIZIONE – DESCRIPTION - KIT	NR
47	98.2176.00	Tappo G 1/2"x10	1
48	96.7380.00	Rosetta D. 17.5x23.0x1.5	1
49	96.7514.00	Rosetta D. 21.5x27.0x1.5	1
50	98.1966.00	Tappo G 1/8"x8	1
51	90.3859.00	OR D. 25.7x2.62 NBR 70SH. 3100	1
52	90.0671.00	Anello d'arresto ZJ30	1
53	53.1500.22	Coperchio laterale	1

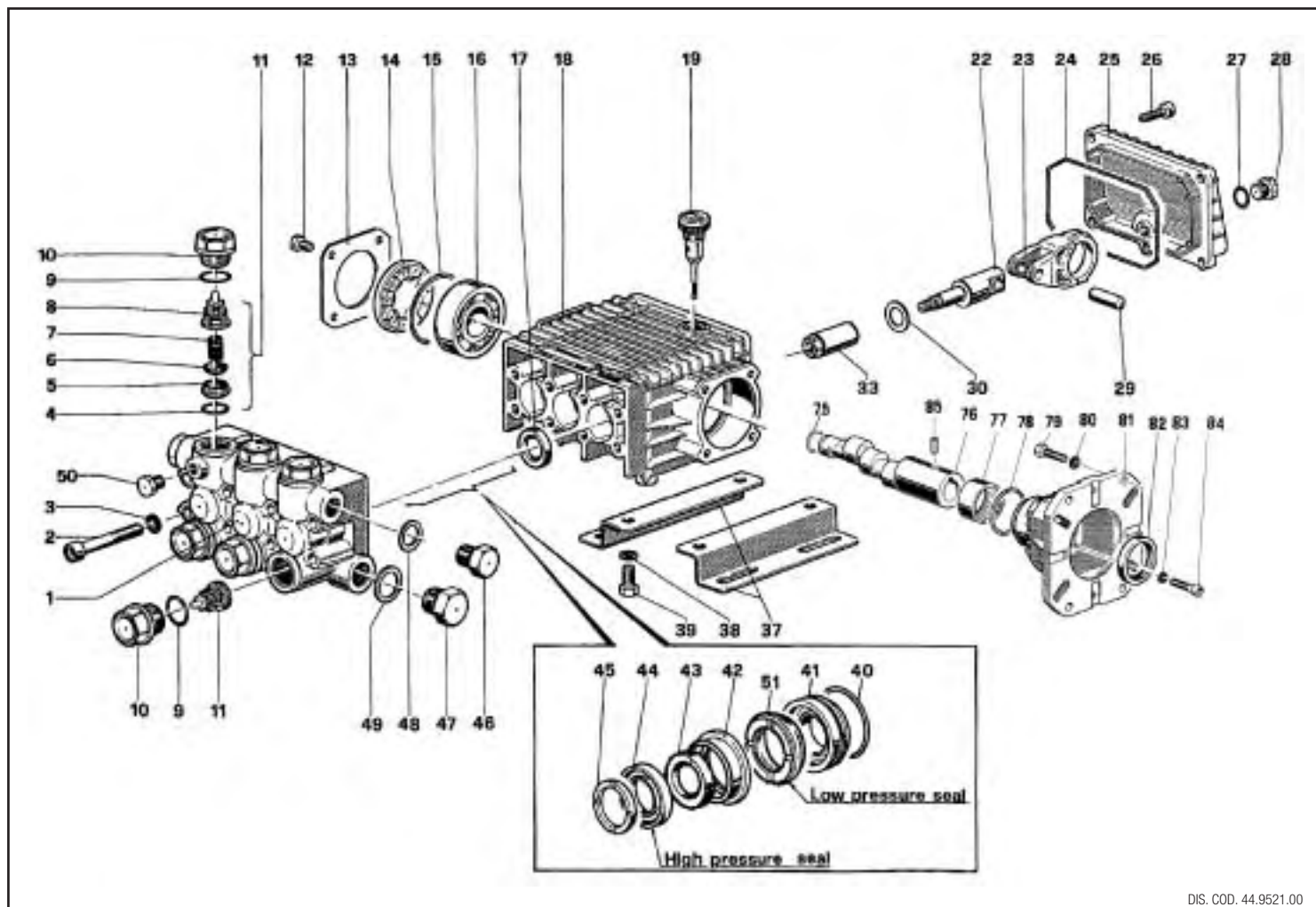


WW966 - WW967 - WW968

KIT RICAMBI – SPARE KITS							
KIT Nr.	KIT 0023	KIT 0123	KIT 0152	KIT 0153	KIT 0154	KIT 0155	KIT 0156
Posizioni include Positions included	17	4 - 5 6 - 7 - 8 (11)	40 - 41	43 - 44 51	42	45	40 - 41 42 - 43 44 - 45 51
Nr. Pcs.	3	6	3	3	3	6	3

POS	COD.	DESCRIZIONE – DESCRIPTION - KIT	NR
1	44.1206.41	Testata pompa D. 13	1
2	99.3175.00	Vite M8x60 UNI 5931	8
4	90.3841.00	OR D. 17.13x2.62 NBR 70SH 3068 123	6
5	36.2003.66	Sede valvola 123	6
6	36.2001.76	Valvola 123	6
7	94.7376.00	Molla Dm. 9.4x14.8 123	6
8	36.2025.51	Guida valvola 123	6
9	90.3847.00	OR D. 20.29x2.62 NBR 90SH 3081	6
10	98.2226.00	Tappo M24x1.5x17	6
11	36.7115.01	Gr. valvola aspiraz. / mandata 123	6
12	99.1807.00	Vite M6x10 UNI 5739	8
13	50.1500.74	Coperchio carter	1
14	53.2108.51	Vetrino spia livello olio	1
15	90.3898.00	OR D. 56.82x2.62 NBR 70SH 3225	1
16	91.8331.00	Cuscinetto a sfere	2
17	90.1614.00	Anello rad. D. 20.0x30.0x5.0 23	3
18	44.0100.22	Carter pompa	1
19	98.2103.00	Tappo carico olio G 3/8"	1
20	44.0200.35 44.0203.35 44.0206.35	Albero ecc. C. 9.5 - WW966 Albero ecc. C. 11.0 - WW967 Albero ecc. C. 13.0 - WW968	1
21	91.4892.00	Linguetta 8x7x35 UNI 6604	1
22	44.0502.66	Guida pistone M5	3
23	44.0300.22	Biella	3
24	90.3920.00	OR D.101.27x2.62 NBR 70SH 3400	1
25	44.1600.22	Coperchio posteriore	1
26	99.1837.00	Vite M6x14 UNI 5931	5
27	90.3585.00	OR D. 10.82x1.78 NBR 70SH 2043	1
28	98.2042.50	Tappo G 1/4"x9 TE17 – Zinc.	1

POS	COD.	DESCRIZIONE – DESCRIPTION - KIT	NR
29	97.7340.00	Spinotto D. 10.0x29.5	3
30	96.6990.00	Rosetta D. 7.5x23.0x0.5	3
31	96.6905.00	Rosetta D. 5.0x11.5x0.4	3
32	99.1690.00	Vite M5x55	3
33	58.0400.09	Pistone D. 13x42	3
36	90.1641.00	Anello rad. D. 25.0x62.0x10.0	1
37	50.2000.74	Piede pompa	2
38	96.7016.00	Rosetta D. 8.4 UNI 1751	4
39	99.3037.00	Vite M8x16 UNI 5739	4
40	90.3612.00	OR D. 31.47x1.78 NBR 70SH 2125 152 156	3
41	44.0803.70	Anello di fondo D. 13 152 156	3
42	44.2162.70	Anello intermedio D. 13 154 156	3
43	90.5076.00	Anello antiest. D. 13.0x17.0x2.0 153 156	3
44	90.2602.00	Anello ten. alt. D. 13.0x21.0x4.0 HP 153 156	3
45	44.1002.51	Anello di testa D. 13 155 156	3
46	98.2100.00	Tappo G 3/8"x13	1
47	98.2176.00	Tappo G 1/2"x10	1
48	96.7380.00	Rosetta D. 17.5x23.0x1.5	1
49	96.7514.00	Rosetta D. 21.5x27.0x1.5	1
50	98.1966.00	Tappo G 1/8"x8	1
51	90.2603.00	Anello ten. alt. D. 13.0x23.0x5.8 LP 153 156	3
52	90.3859.00	OR D. 25.7x2.62 NBR 70SH. 3100	1
53	90.0671.00	Anello d'arresto ZJ30	1
54	53.1500.22	Coperchio laterale	1



DIS. COD. 44.9521.00

44 SERIES



WW963C
WW964C
WW965C

VERSION

VERSIONE

C

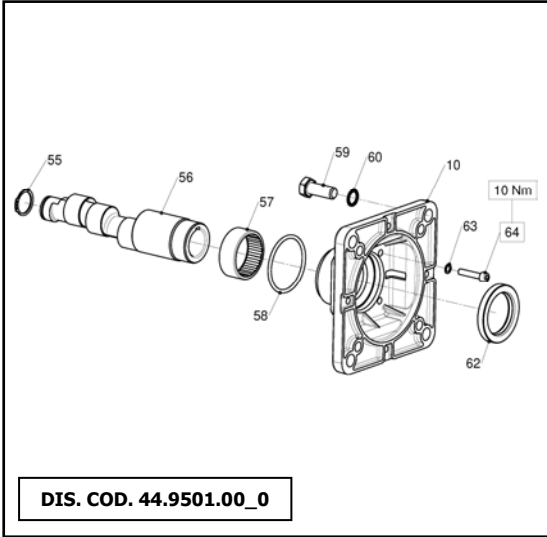
KIT N.	KIT 23	KIT 123	KIT 152	KIT 153	KIT 154	KIT 155	KIT 156	KIT 158
Positions Included Posizioni Include	17	4-5-6 7-8 (11)	40-41	43-44 51	42	45	40-41 42-43 44-45 51	9-10
N. pcs.	3	6	3	3	3	3	3	6

POS.	CODE CODICE	DESCRIPTION DESCRIZIONE	N. PCS.
1	44.1208.41	Testata Nickel (pistone Ø 13)	1
2	99.3175.00	Vite M8x60 UNI 5931	8
3	96.7014.00	Rosetta Ø 8 Schnorr	8
4	90.3841.00	OR Ø 17,13x2,62	KIT 123 6
5	36.2003.66	Sede valvola	KIT 123 6
6	36.2001.76	Valvola	KIT 123 6
7	94.7376.00	Molla Ø 9,4x14,8	KIT 123 6
8	36.2025.51	Guida valvola	KIT 123 6
9	90.3847.00	OR Ø 20,24x2,62	KIT 158 6
10	98.2225.00	Tappo M 24x1,5x17 - Nickel	KIT 158 6
11	36.7115.01	Gruppo valvola	KIT 123 6
12	99.1807.00	Vite M6x10 UNI 5739	4
13	50.1500.74	Coperchio carter	1
14	44.2118.01	Distanziale con indicatore	1
15	90.4097.00	OR Ø 55,56x3,53	1
16	91.8328.00	Cuscinetto a sfere - 6305	1
17	90.1614.00	Anello radiale Ø 20x30x5	KIT 23 3
18	44.0100.22	Carter	1
19	98.2103.00	Tappo carico olio G3/8	1
22	44.0501.66	Guida pistone	3
23	44.0300.22	Biella	3
24	90.3920.00	OR Ø 101,27x2,62	1
25	44.1600.22	Coperchio posteriore	1
26	99.1837.00	Vite M6x14 UNI 5931	5
27	90.3585.00	OR Ø 10,82x1,78	1
28	98.2041.00	Tappo G1/4x9	1
29	97.7340.00	Spinotto Ø 10x29,5	3
30	96.6967.00	Rosetta Ø 7,1x28	3
33	44.0402.66	Pistone Ø 13	3

POS.	CODE CODICE	DESCRIPTION DESCRIZIONE	N. PCS.
37	50.2000.74	Piedino	2
38	96.7016.00	Rosetta Ø 8 UNI 1751	4
39	99.3037.00	Vite M8x16 UNI 5739	4
40	90.3612.00	OR Ø 31,47x1,78	KIT 152 - 156 3
41	44.0803.70	Anello di fondo Ø 13	KIT 152 - 156 3
42	44.2162.70	Anello intermedio Ø 13	KIT 154 - 156 3
43	90.5076.00	Anello anties. Ø 13x17x2	KIT 153 - 156 3
44	90.2602.00	Anello di tenuta Ø 13 H.P. seal	KIT 153 - 156 3
45	44.1002.51	Anello di testa Ø 13	KIT 155 - 156 3
46	98.2100.00	Tappo G 3/8x13	1
47	98.2176.00	Tappo G 1/2x10	1
48	96.7380.00	Rosetta Ø 17,5x23x1,5	1
49	96.7514.00	Rosetta Ø 21,5x27x1,5	1
50	98.1967.00	Tappo G 1/8x8 - Nickel	1
51	90.2603.00	Anello di tenuta Ø 13 L.P. seal	KIT 153 - 156 3
75	90.0635.00	Anello di fermo albero	1
	44.0209.65	Albero WW963C	1
	44.0212.65	Albero WW964C	1
	44.0221.65	Albero WW965C	1
77	91.8568.00	Boccola a rullini	1
78	90.4097.00	OR Ø 55,56x3,53	1
	99.2755.00	Vite 5/16x1" UNF	4
	99.3345.00	Vite 3/8x1" UNC	4
	96.7020.00	Rosetta Ø 8 UNI 1736	4
	96.7104.00	Rosetta Ø 10 Schnorr	4
81	10.0518.22	Flangia per mot. a scoppio	1
82	90.1690.00	Anello radiale Ø 45x62x8	1
83	96.6938.00	Rosetta Ø 6 Schnorr	4
84	99.1912.00	Vite M6x30 UNI 5931	4
85	99.1790.00	Vite M6x6 UNI 5929	1

VERSION A (for electric motors NEMA 184 TC)

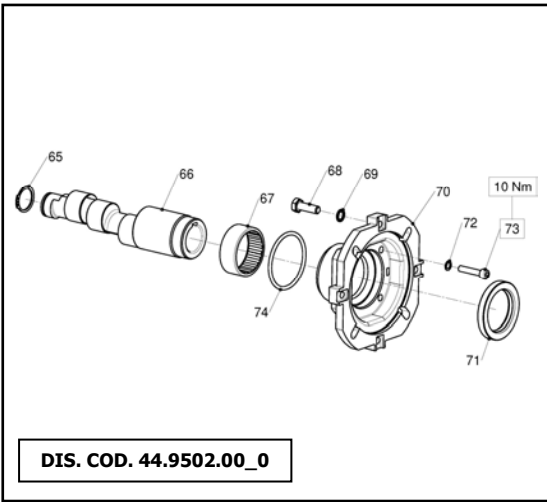
W950 - W951 - W952 - W953 - W954 - W955 - W956 - W957
W958 - W959 - W14200 - W16180 - WW964 - WW965
WW967 - WW968



POS	COD.	DESCRIZIONE - DESCRIPTION	NR
55	90.0635.00	Anello di fermo Ø 25	1
56	44.0214.65 44.0216.65	Albero ecc. C. 11.0 - W950 W954 W955 W956 W14200 WW964 WW967 Albero ecc. C. 13.0 - W951 W952 W953 W957 W958 W959 W16180 WW965 WW968	1
57	91.8568.00	Boccola a rullini	1
58	90.4097.00	OR D. 55.56x3.53 NBR 70SH 159	1
59	99.4600.00	Vite 1/2"-13x1- 1/4"	4
60	96.7195.00	Rosetta D. 13.0x18.0x1.1	4
61	10.0504.22	Flangia per motore elettrico	1
62	90.1690.00	Anello rad. D. 45.0x62.0x8.0	1
63	96.6938.00	Rosetta D. 6.4x10.0x0.7	4
64	99.1912.00	Vite M6x30 UNI 5931	4

VERSION B (for electric motors IEC 100-112 B14)

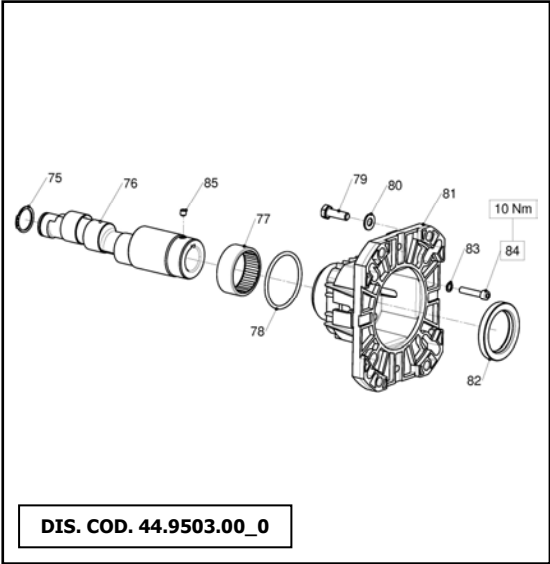
W97 - W112 - W124 - W130 - W130HH - W140 - W140HH
W150 - W154 - W154HH - W170 - W200 - W204 - WW116
WW136 - WW156 - WW176 - WW186 - WW206 - WW209



POS	COD.	DESCRIZIONE - DESCRIPTION	NR
65	90.0635.00	Anello arresto A25 UNI7435	1
66	44.0213.65 44.0215.65 44.0210.65	Albero ecc. C. 11.0 - W112 W140 W150 WW116 WW156 WW209 W200 W140HH Albero ecc. C. 13.0 - W97 W124 W130 W154 W170 WW136 WW176 W204 W130HH W154HH Albero ecc. C. 9.5 - WW186 WW206	1
67	91.8568.00	Boccola a rullini	1
68	99.3067.00	Vite M8x25 UNI 5739	4
69	96.7014.00	Rosetta D. 8.4x13.0x0.8	4
70	10.0494.22	Flangia per motore elettrico	1
71	90.1690.00	Anello rad. D. 45.0x62.0x8.0	1
72	96.6938.00	Rosetta D. 6.4x10.0x0.7	4
73	99.1912.00	Vite M6x30 UNI 5931	4
74	90.4097.00	OR D. 55.56x3.53 NBR 70SH 159	1

VERSION C (for gasoline engines SAE J 609 type B ext.4)

WW960 - WW961 - WW962
WW966 - WW967 - WW968



POS	COD.	DESCRIZIONE - DESCRIPTION	NR
75	90.0635.00	Anello arresto A25 UNI7435	1
76	44.0220.65	Albero ecc. C. 8.5 - WW960	1
	44.0209.65	Albero ecc. C. 9.5 - WW961 WW963 WW966	
	44.0212.65	Albero ecc. C. 11.0 - WW962 WW964 WW967	
	44.0221.65	Albero ecc. C. 13.0 - WW965 WW968	
77	91.8568.00	Boccola a rullini	1
78	90.4097.00	OR D. 55.56x3.53 NBR 70SH 159	1
79	99.2755.00	Vite 5/16"-24x1"	4
	99.3346.00	Vite 3/8"-16x1"-1/4	
80	96.7020.00	Rosetta D. 8.4x15.0x1.5	4
	96.7104.00	Rosetta D. 10.5x16.0x1.0	
81	10.0518.22	Flangia per motore a scoppio	1
82	90.1690.00	Anello rad. D. 45.0x62.0x8.0	1
83	96.6938.00	Rosetta D. 6.4x10.0x0.7	4
84	99.1912.00	Vite M6x30 UNI 5931	4
85	99.1790.00	Vite M6x6 UNI 5929	1

VH VERSION

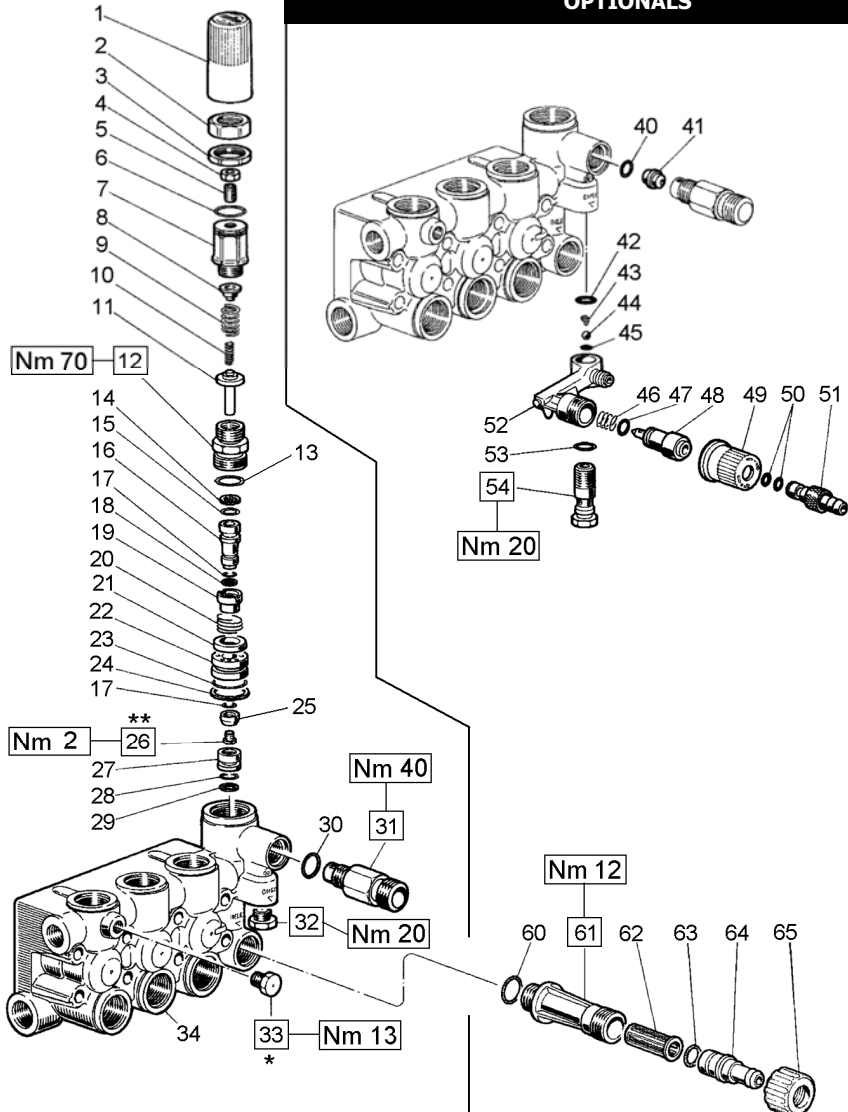
VERSIONE CON VALVOLA DI REGOLAZIONE AUT. – VERSION WITH BUILT-IN AUT. UNLOADER
VERSION AVEC RÉGULATEUR AUT. DE PRESSION INCORPORÉ
AUSFÜHRUNG MIT EINGEBAUTEM AUT. DRUCKREGULIERVENTIL

VERSIÓN CON REGULADOR AUT. DE PRESIÓN INCORPORADO - VERSÃO COM VÁLVULA DO REGULAMENTO AUT.

- * Fissare con Loctite 542 col. ROSSO
- * Affix with Loctite 542 col. RED
- * Fixer avec de la Loctite 542 couleur ROUGE
- * Mit Loctite 542 ROT befestigen
- * Fijar con Loctite 542 col. ROJO
- * Fixar com Loctite 542 cor. VERMELHA

- ** Fissare con Loctite 270 col. VERDE
- ** Affix with Loctite 270 col. GREEN
- ** Fixer avec de la Loctite 270 couleur VERT
- ** Mit Loctite 270 GRÜN befestigen
- ** Fijar con Loctite 270 col. VERDE
- ** Fixar com Loctite 270 cor. VERDE

OPTIONALS



VH VERSION

VERSIONE CON VALVOLA DI REGOLAZIONE AUT. – VERSION WITH BUILT-IN AUT. UNLOADER

**VERSION AVEC RÉGULATEUR AUT. DE PRESSION INCORPORÉ
AUSFÜHRUNG MIT EINGEBAUTEM AUT. DRUCKREGULIERVENTIL**

VERSIÓN CON REGULADOR AUT. DE PRESIÓN INCORPORADO - VERSÃO COM VÁLVULA DO REGULAMENTO AUT.

POS	COD.	DESCRIZIONE – DESCRIPTION - KIT	N
1	36.3187.51	Pomolo	1
2	36.3186.70	Ghiera – OPTIONAL	1
3	92.2935.00	Dado M28x1.5 - OPTIONAL	1
4	92.2218.00	Dado M8x13 UNI 5589	1
5	99.3054.00	Vite M8x20 UNI 5923	1
6	90.3598.00	OR D. 20.35x1.78 NBR 70SH 2081	1
7	36.3185.70	Registro pressione	1
8	36.3169.70	Piattello molla	1
9	94.7436.00	Molla Dm. 15.0x35.0	1
10	94.7345.00	Molla Dm. 7.6x29.0	1
11	36.3233.70	Piattello inferiore molla	1
12	36.3228.70	Boccola di guida	1
13	90.3857.00	OR D. 23.81x2.62 NBR 70SH 132	1
14	90.5052.00	Anello antiest. D. 9.6x14.0x1.5	137 1
15	90.3820.00	OR D. 9.13x2.62 – Spec. – 109	137 1
16	36.3234.70	Pistoncino di comando	137 1
17	90.3575.00	OR D. 6.75x1.78 – Spec. – 106	137 2
18	90.5025.00	Anello antiest. D. 7.0x10.0x1.5	137 1
19	36.3230.70	Distanziale	137 1
20	94.7485.00	Molla Dm. 18.5x11.5	137 1
21	36.3231.51	Valvola	137 1
22	36.3229.70	Guida valvola	137 1
23	90.3600.00	OR D. 21.95x1.78 NBR 70SH 2087	137 1
24	90.5144.00	Anello antiest. D. 22.0x25.0x1.5	137 1
25	36.3190.66	Valvola sferica	137 1
26	99.1509.00	Vite M5x0.8x8.5	137 1
27	36.3164.66	Sede valvola	137 1
28	90.3822.00	OR D. 9.92x2.62 – Spec. – 112	137 1
29	90.5065.00	Anello antiest. D. 10.6x15.0x2.0	137 1
30	90.3832.00	OR D. 13.95x2.62 – Spec. - 3056	94 1
31	10.0078.70 10.0147.70	Nipplo G 3/8" - D. 3 Nipplo M22x1.5 - D. 3	1

32	98.2057.00	Tappo M14x1.5	1
33	98.1966.00	Tappo G 1/8"x8	1
34	44.1201.41 44.1205.41	Testata con valvola D. 15 Testata con valvola D. 18	1
OPTIONALS			
POS	COD.	DESCRIZIONE – DESCRIPTION - KIT	NR
40	90.3822.00	OR D. 9.92x2.62 – Spec. – 112	94 1
41	10.0151.66 10.0076.66	Ugello – Nozzle D. 2.0 (8÷11 l/min.) Ugello – Nozzle D. 2.2 (12÷17 l/min.)	1
42	90.3582.00	OR D. 9.25x1.78 NBR 70SH 2037	94 1
43	94.8217.00	Molla conica Dm. 4.3/7.3x11.0	94 1
44	97.4782.00	Sfera D. 7/32"	94 1
45	90.3572.00	OR D. 5.28x1.78 – Spec. – 2021	94 1
46	94.7383.00	Molla Dm. 9.75x10.0	94 1
47	90.3580.00	OR D. 8.73x1.78 – Spec. – 108	94 1
48	36.2564.70	Otturatore	1
49	36.2565.51	Pomolo	1
50	90.3570.00	OR D. 4.48x1.78 NBR 70SH 2018	94 1
51	36.2566.70	Innesto portagomma	1
52	36.3181.51	Corpo dosatore	1
53	90.3585.00	OR D. 10.82x1.78 NBR 70SH 2043	94 1
54	36.2563.70	Sede valvola	1
60	90.3841.00	OR D. 17.13x2.62 NBR 70SH 3068	1
61	36.3182.51	Nipplo di aspirazione G 3/4"	1
62	92.8925.00	Filtro	1
63	90.3828.00	OR D. 12.37x2.62 NBR 70SH 3050	1
64	36.2569.51	Portagomma aspirazione	1
65	92.9828.00	Ghiera G 3/4"	1

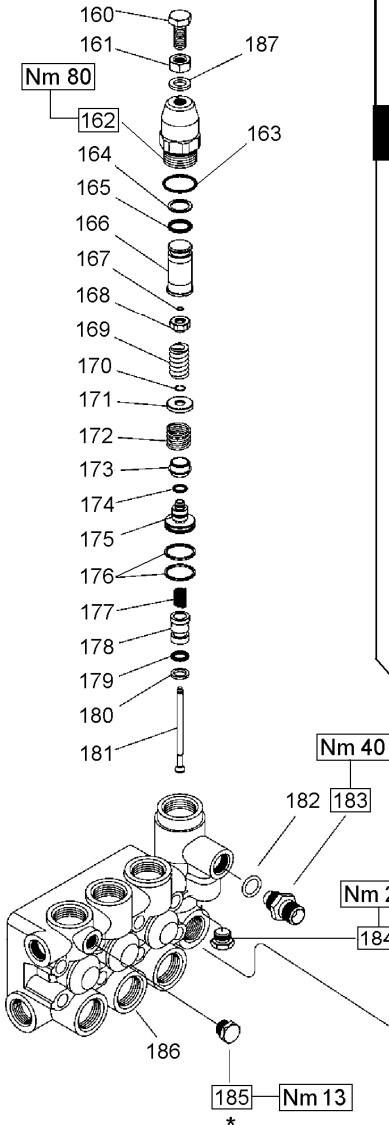
KIT RICAMBI – SPARE KITS

KIT NR.	KIT 0094	KIT 0137
Posizioni incluse Positions included	30 - 40 - 42 - 43 44 - 45 - 46 - 47 50 - 53	14 - 15 - 16 - 17 18 - 19 - 20 - 21 22 - 23 - 24 - 25 26 - 27 - 28 - 29
Nr. Pcs.	1	1

VK VERSION

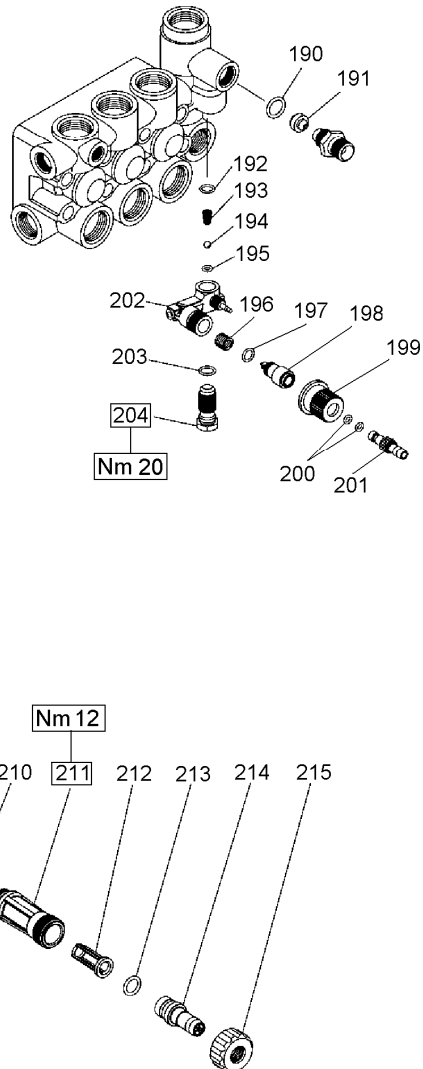
VERSIONE CON VALVOLA DI REGOLAZIONE AUT. – VERSION WITH BUILT-IN AUT. UNLOADER
VERSION AVEC RÉGULATEUR AUT. DE PRESSION INCORPORÉ
AUSFÜHRUNG MIT EINGEBAUTEM AUT. DRUCKREGULIERVENTIL

VERSIÓN CON REGULADOR AUT. DE PRESIÓN INCORPORADO - VERSÃO COM VÁLVULA DO REGULAMENTO AUT.



- * Fissare con Loctite 542 col. ROSSO
- * Affix with Loctite 542 col. RED
- * Fixer avec de la Loctite 542 couleur ROUGE
- * Mit Loctite 542 ROT befestigen
- * Fijar con Loctite 542 col. ROJO
- * Fixar com Loctite 542 cor. VERMELHA

OPTIONALS



DIS. COD. 44.9530.00_0

VK VERSION

VERSIONE CON VALVOLA DI REGOLAZIONE AUT. – VERSION WITH BUILT-IN AUT. UNLOADER
VERSION AVEC RÉGULATEUR AUT. DE PRESSION INCORPORÉ
AUSFÜHRUNG MIT EINGEBAUTEM AUT. DRUCKREGULIERVENTIL
VERSIÓN CON REGULADOR AUT. DE PRESIÓN INCORPORADO - VERSÃO COM VÁLVULA DO REGULAMENTO AUT.

POS	COD.	DESCRIZIONE – DESCRIPTION - KIT	N
160	99.3663.00	Vite M10x1.25x25 UNI 5740	1
161	92.2368.00	Dado M10x1.25 UNI 5589	1
162	36.3270.70	Corpo superiore	1
163	90.3604.00	OR D. 25.12x1.78 NBR 70SH 2100	1
164	90.5090.00	Anello antiest. D. 15.8x20.0x1.3	1
165	90.3835.00	OR D. 15.08x2.62 NBR 70SH 119	1
166	36.3271.70	Fine corsa	1
167	90.0059.00	Anello arresto A05 UNI7433	177 1
168	36.3274.70	Piattello molla	177 1
169	94.7408.00	Molla Dm. 12.5x26.0	177 1
170	90.0062.00	Anello arresto A08 UNI7433	177 1
171	36.3273.70	Piattello molla	177 1
172	94.7480.00	Molla Dm. 18.2x16.5	177 1
173	36.3277.56	Otturatore	177 1
174	90.3581.00	OR D. 8.73x1.78 NBR 70SH 108	177 1
175	36.3272.70	Pistoncino di comando	177 1
176	92.7710.00	Fascia elastica D. 25	177 2
177	94.7372.00	Molla Dm. 9.3x15.0	177 1
178	36.3276.66	Sede valvola	177 1
179	90.3823.00	OR D. 9.92x2.62 NBR 70SH 112	177 1
180	90.5065.00	Anello antiest. D. 10.6x15.0x2.0	177 1
181	36.3275.66	Asta valvola	177 1
182	90.3832.00	OR D. 13.95x2.62 – Spec. – 3056	94 1
183	10.0078.70 10.0147.70	Nipplo G 3/8" – D. 3 Nipplo M22x1.5 – D. 3	1
184	98.2057.00	Tappo M14x1.5	1
185	98.1966.00	Tappo G 1/8"x8	1
186	44.1201.41 44.1205.41	Testata con valvola D. 15 Testata con valvola D. 18	1
187	96.7103.00	Rosetta D. 10.5x18.0x2.0	1

OPTIONALS			
POS	COD.	DESCRIZIONE – DESCRIPTION - KIT	NR
190	90.3822.00	OR D. 9.92x2.62 – Spec. – 112	94 1
191	10.0151.66 10.0076.66	Ugello – Nozzle D. 2.0 (8÷11 l/min.) Ugello – Nozzle D. 2.2 (12÷17 l/min.)	1
192	90.3582.00	OR D. 9.25x1.78 NBR 70SH 2037	94 1
193	94.8217.00	Molla conica Dm. 4.3/7.3x11.0	94 1
194	97.4782.00	Sfera D. 7/32"	94 1
195	90.3572.00	OR D. 5.28x1.78 – Spec. – 2021	94 1
196	94.7383.00	Molla Dm. 9.75x10.0	94 1
197	90.3580.00	OR D. 8.73x1.78 – Spec. – 108	94 1
198	36.2564.70	Otturatore	1
199	36.2565.51	Pomolo	1
200	90.3570.00	OR D. 4.48x1.78 NBR 70SH 2018	94 2
201	36.2566.70	Innesto portagomma	1
202	36.3181.51	Corpo dosatore	1
203	90.3585.00	OR D. 10.82x1.78 NBR 70SH 2043	94 1
204	36.2563.70	Sede valvola	1
210	90.3841.00	OR D. 17.13x2.62 NBR 70SH 3068	1
211	36.3182.51	Nipplo di aspirazione G 3/4"	1
212	92.8925.00	Filtro	1
213	90.3828.00	OR D. 12.37x2.62 NBR 70SH 3050	1
214	36.2569.51	Portagomma aspirazione	1
215	92.9828.00	Ghiera G 3/4"	1

KIT RICAMBI – SPARE KITS

KIT NR.	KIT 94	KIT 177
Posizioni include Positions included	182 – 190 – 192 193 – 194 – 195 196 – 197 – 200 203	167 – 168 – 169 170 – 171 – 172 173 – 174 – 175 176 – 177 – 178 179 – 180 -181
Nr. Pcs.	1	1